

## ARG64973 anti-SUMF1 antibody

Package: 100 µg  
Store at: -20°C

### Summary

Product Description	Goat Polyclonal antibody recognizes SUMF1
Tested Reactivity	Hu, Ms
Predict Reactivity	Cow, Rat, Dog
Tested Application	WB
Host	Goat
Clonality	Polyclonal
Isotype	IgG
Target Name	SUMF1
Species	Human
Immunogen	C-ETLNPKGPPSGKDR
Conjugation	Un-conjugated
Alternate Names	AAPA3037; UNQ3037; EC 1.8.99.-; C-alpha-formylglycine-generating enzyme 1; FGE; Sulfatase-modifying factor 1

### Application Instructions

Application table	Application	Dilution
	WB	0.5 - 2 µg/ml
Application Note	WB: Recommend incubate at RT for 1h. * The dilutions indicate recommended starting dilutions and the optimal dilutions or concentrations should be determined by the scientist.	

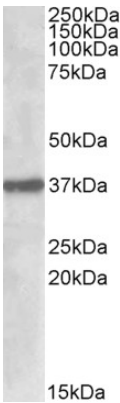
### Properties

Form	Liquid
Purification	Purified from goat serum by antigen affinity chromatography.
Buffer	Tris saline (pH 7.3), 0.02% Sodium azide and 0.5% BSA.
Preservative	0.02% Sodium azide
Stabilizer	0.5% BSA
Concentration	0.5 mg/ml
Storage instruction	For continuous use, store undiluted antibody at 2-8°C for up to a week. For long-term storage, aliquot and store at -20°C or below. Storage in frost free freezers is not recommended. Avoid repeated freeze/thaw cycles. Suggest spin the vial prior to opening. The antibody solution should be gently mixed before use.
Note	For laboratory research only, not for drug, diagnostic or other use.

Bioinformation

Database links	<a href="#">GeneID: 285362 Human</a> <a href="#">GeneID: 58911 Mouse</a> <a href="#">Swiss-port # Q8NBK3 Human</a> <a href="#">Swiss-port # Q8R0F3 Mouse</a>
Background	This gene encodes an enzyme that catalyzes the hydrolysis of sulfate esters by oxidizing a cysteine residue in the substrate sulfatase to an active site 3-oxoalanine residue, which is also known as C-alpha-formylglycine. Mutations in this gene cause multiple sulfatase deficiency, a lysosomal storage disorder. Alternative splicing results in multiple transcript variants. [provided by RefSeq, Sep 2009]
Research Area	Developmental Biology antibody; Signaling Transduction antibody
Calculated Mw	41 kDa
PTM	N-glycosylated. Contains high-mannose-type oligosaccharides.

Images



ARG64973 anti-SUMF1 antibody WB image

Western Blot: Mouse Pancreas lysate (35 µg protein in RIPA buffer) stained with ARG64973 anti-SUMF1 antibody at 1 µg/ml dilution.