

ARG65009 anti-Afamin / alpha Albumin antibody

Package: 100 µg
Store at: -20°C

Summary

Product Description	Goat Polyclonal antibody recognizes Afamin / alpha Albumin
Tested Reactivity	Hu
Predict Reactivity	Ms, Rat, Cow, Dog
Tested Application	WB
Host	Goat
Clonality	Polyclonal
Isotype	IgG
Target Name	Afamin / alpha Albumin
Species	Human
Immunogen	C-NKDDRPKDSLRE
Conjugation	Un-conjugated
Alternate Names	Alpha-albumin; ALF; ALBA; ALB2; Afamin; Alpha-Alb

Application Instructions

Application table	Application	Dilution
	WB	0.3 - 1 µg/ml

Application Note
WB: Recommend incubate at RT for 1h.
* The dilutions indicate recommended starting dilutions and the optimal dilutions or concentrations should be determined by the scientist.

Properties

Form	Liquid
Purification	Purified from goat serum by antigen affinity chromatography.
Buffer	Tris saline (pH 7.3), 0.02% Sodium azide and 0.5% BSA.
Preservative	0.02% Sodium azide
Stabilizer	0.5% BSA
Concentration	0.5 mg/ml
Storage instruction	For continuous use, store undiluted antibody at 2-8°C for up to a week. For long-term storage, aliquot and store at -20°C or below. Storage in frost free freezers is not recommended. Avoid repeated freeze/thaw cycles. Suggest spin the vial prior to opening. The antibody solution should be gently mixed before use.
Note	For laboratory research only, not for drug, diagnostic or other use.

Bioinformation

Database links

[GeneID: 173 Human](#)

[Swiss-port # P43652 Human](#)

Background

This gene is a member of the albumin gene family, which is comprised of four genes that localize to chromosome 4 in a tandem arrangement. These four genes encode structurally-related serum transport proteins that are known to be evolutionarily related. The protein encoded by this gene is regulated developmentally, expressed in the liver and secreted into the bloodstream. [provided by RefSeq, Jul 2008]

Research Area

Cell Biology and Cellular Response antibody; Metabolism antibody; Signaling Transduction antibody

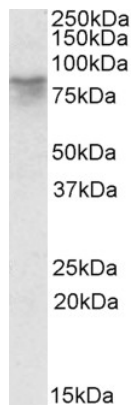
Calculated Mw

69 kDa

PTM

N-glycosylated; more than 90% of the glycans are sialylated.

Images



ARG65009 anti-Afamin / alpha Albumin antibody WB image

Western Blot: Human Cerebellum lysate (35 μ g protein in RIPA buffer) stained with ARG65009 anti-Afamin / alpha Albumin antibody at 0.3 μ g/ml dilution.