

ARG65016 anti-Wnt15 / Wnt9b antibody

Package: 100 µg
Store at: -20°C

Summary

Product Description	Goat Polyclonal antibody recognizes Wnt15 / Wnt9b
Tested Reactivity	Hu, Ms
Predict Reactivity	Rat
Tested Application	WB
Host	Goat
Clonality	Polyclonal
Isotype	IgG
Target Name	Wnt15 / Wnt9b
Species	Human
Immunogen	C-KRGNKDLRARADA
Conjugation	Un-conjugated
Alternate Names	WNT15; Protein Wnt-14b; Protein Wnt-9b; WNT14B; Protein Wnt-15

Application Instructions

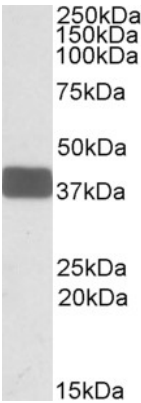
Application table	Application	Dilution
	WB	0.3 - 1 µg/ml
Application Note	WB: Recommend incubate at RT for 1h. * The dilutions indicate recommended starting dilutions and the optimal dilutions or concentrations should be determined by the scientist.	

Properties

Form	Liquid
Purification	Purified from goat serum by antigen affinity chromatography.
Buffer	Tris saline (pH 7.3), 0.02% Sodium azide and 0.5% BSA.
Preservative	0.02% Sodium azide
Stabilizer	0.5% BSA
Concentration	0.5 mg/ml
Storage instruction	For continuous use, store undiluted antibody at 2-8°C for up to a week. For long-term storage, aliquot and store at -20°C or below. Storage in frost free freezers is not recommended. Avoid repeated freeze/thaw cycles. Suggest spin the vial prior to opening. The antibody solution should be gently mixed before use.
Note	For laboratory research only, not for drug, diagnostic or other use.

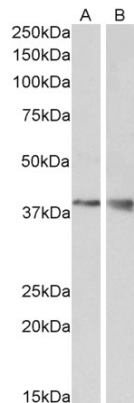
Database links	GeneID: 22412 Mouse GeneID: 7484 Human Swiss-port # O14905 Human Swiss-port # O35468 Mouse
Background	The WNT gene family consists of structurally related genes that encode secreted signaling proteins. These proteins have been implicated in oncogenesis and in several developmental processes, including regulation of cell fate and patterning during embryogenesis. This gene is a member of the WNT gene family. Study of its expression in the teratocarcinoma cell line NT2 suggests that it may be implicated in the early process of neuronal differentiation of NT2 cells induced by retinoic acid. This gene is clustered with WNT3, another family member, in the chromosome 17q21 region. [provided by RefSeq, Jul 2008]
Research Area	Developmental Biology antibody; Signaling Transduction antibody
Calculated Mw	39 kDa
PTM	Palmitoleylation is required for efficient binding to frizzled receptors. Depalmitoleylation leads to Wnt signaling pathway inhibition.

Images



ARG65016 anti-Wnt15 / Wnt9b antibody WB image

Western blot: Human Brain Cerebellum lysate (35 µg protein in RIPA buffer) stained with ARG65016 anti-Wnt15 / Wnt9b antibody at 0.3 µg/ml dilution.



ARG65016 anti-Wnt15 / Wnt9b antibody WB image

Western blot: Mouse Kidney (A) and Brain (B) lysate (35 µg protein in RIPA buffer) stained with ARG65016 anti-Wnt15 / Wnt9b antibody at 1 µg/ml dilution.