

ARG65084 anti-SLC4A11 / BTR1 antibody

Package: 100 µg
Store at: -20°C

Summary

Product Description	Goat Polyclonal antibody recognizes SLC4A11 / BTR1
Tested Reactivity	Hu
Predict Reactivity	Ms, Rat, Cow, Dog
Tested Application	IHC-P, WB
Host	Goat
Clonality	Polyclonal
Isotype	IgG
Target Name	SLC4A11 / BTR1
Species	Human
Immunogen	C-HTSRKYLKLNFKKE
Conjugation	Un-conjugated
Alternate Names	Sodium borate cotransporter 1; NaBC1; Sodium bicarbonate transporter-like protein 11; NABC1; Solute carrier family 4 member 11; CHED2; CDPD1; BTR1; dJ794I6.2; Bicarbonate transporter-related protein 1

Application Instructions

Application table	Application	Dilution
	IHC-P	3 - 5 µg/ml
	WB	0.3 - 1 µg/ml
Application Note	WB: Recommend incubate at RT for 1h. IHC-P: Antigen Retrieval: Steam tissue section in Citrate buffer (pH 6.0). * The dilutions indicate recommended starting dilutions and the optimal dilutions or concentrations should be determined by the scientist.	

Properties

Form	Liquid
Purification	Purified from goat serum by antigen affinity chromatography.
Buffer	Tris saline (pH 7.3), 0.02% Sodium azide and 0.5% BSA.
Preservative	0.02% Sodium azide
Stabilizer	0.5% BSA
Concentration	0.5 mg/ml
Storage instruction	For continuous use, store undiluted antibody at 2-8°C for up to a week. For long-term storage, aliquot and store at -20°C or below. Storage in frost free freezers is not recommended. Avoid repeated freeze/thaw cycles. Suggest spin the vial prior to opening. The antibody solution should be gently mixed

before use.

Note

For laboratory research only, not for drug, diagnostic or other use.

Bioinformation

Database links

[GeneID: 83959 Human](#)

[Swiss-port # Q8NBS3 Human](#)

Background

This gene encodes a voltage-regulated, electrogenic sodium-coupled borate cotransporter that is essential for borate homeostasis, cell growth and cell proliferation. Mutations in this gene have been associated with a number of endothelial corneal dystrophies including recessive corneal endothelial dystrophy 2, corneal dystrophy and perceptive deafness, and Fuchs endothelial corneal dystrophy. Multiple transcript variants encoding different isoforms have been described. [provided by RefSeq, Mar 2010]

Research Area

Metabolism antibody; Neuroscience antibody; Signaling Transduction antibody

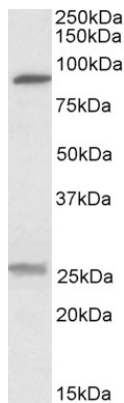
Calculated Mw

100 kDa

PTM

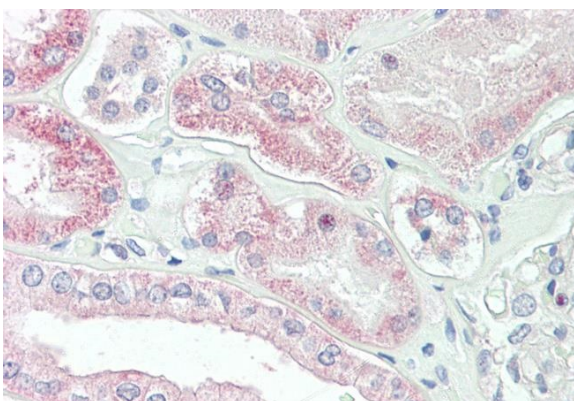
Glycosylated.

Images



ARG65084 anti-SLC4A11 / BTR1 antibody WB image

Western Blot: Human Kidney lysate (35 µg protein in RIPA buffer) stained with ARG65084 anti-SLC4A11 / BTR1 antibody at 0.3 µg/ml dilution.



ARG65084 anti-SLC4A11 / BTR1 antibody IHC-P image

Immunohistochemistry: Paraffin-embedded Human kidney tissue. Antigen Retrieval: Steam tissue section in Citrate buffer (pH 6.0). The tissue section was stained with ARG65084 anti-SLC4A11 / BTR1 antibody at 3.75 µg/ml dilution followed by AP-staining.