

ARG65110 anti-KLHL6 / Kelch like 6 antibody

Package: 100 µg
Store at: -20°C

Summary

Product Description	Goat Polyclonal antibody recognizes KLHL6 / Kelch like 6
Tested Reactivity	Hu, Ms, Rat
Predict Reactivity	Cow, Dog
Tested Application	WB
Host	Goat
Clonality	Polyclonal
Isotype	IgG
Target Name	KLHL6 / Kelch like 6
Species	Human
Immunogen	C-SERTKPRMHEFQSE
Conjugation	Un-conjugated
Alternate Names	Kelch-like protein 6

Application Instructions

Application table	Application	Dilution
	WB	1 - 3 µg/ml
Application Note	WB: Recommend incubate at RT for 1h. * The dilutions indicate recommended starting dilutions and the optimal dilutions or concentrations should be determined by the scientist.	

Properties

Form	Liquid
Purification	Purified from goat serum by antigen affinity chromatography.
Buffer	Tris saline (pH 7.3), 0.02% Sodium azide and 0.5% BSA.
Preservative	0.02% Sodium azide
Stabilizer	0.5% BSA
Concentration	0.5 mg/ml
Storage instruction	For continuous use, store undiluted antibody at 2-8°C for up to a week. For long-term storage, aliquot and store at -20°C or below. Storage in frost free freezers is not recommended. Avoid repeated freeze/thaw cycles. Suggest spin the vial prior to opening. The antibody solution should be gently mixed before use.
Note	For laboratory research only, not for drug, diagnostic or other use.

Bioinformation

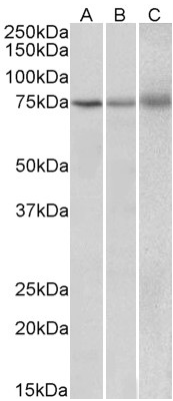
Database links	GeneID: 239743 Mouse GeneID: 89857 Human Swiss-port # Q6V595 Mouse Swiss-port # Q8WZ60 Human
Gene Symbol	KLHL6
Gene Full Name	kelch-like family member 6
Function	Involved in B-lymphocyte antigen receptor signaling and germinal center formation. [UniProt]
Research Area	Immune System antibody
Calculated Mw	70 kDa

Images



ARG65110 anti-KLHL6 / Kelch like 6 antibody WB image

Western blot: NIH3T3 lysate (35 µg protein in RIPA buffer) stained with ARG65110 anti-KLHL6 / Kelch like 6 antibody at 1 µg/ml dilution.



ARG65110 anti-KLHL6 / Kelch like 6 antibody WB image

Western blot: 35 µg of Human (A), Mouse (B) and Rat (C) spleen lysates (in RIPA buffer) stained with ARG65110 anti-KLHL6 / Kelch like 6 antibody at 2 µg/ml dilution and incubated at RT for 1 hour.