

ARG65114 anti-MAPRE3 antibody

Package: 100 µg
Store at: -20°C

Summary

Product Description	Goat Polyclonal antibody recognizes MAPRE3
Tested Reactivity	Hu, Ms
Predict Reactivity	Cow, Dog
Tested Application	WB
Host	Goat
Clonality	Polyclonal
Isotype	IgG
Target Name	MAPRE3
Species	Human
Immunogen	SGRLSNVAPPCILR
Conjugation	Un-conjugated
Alternate Names	RP3; EBF3-S; EB1 protein family member 3; EBF3; Microtubule-associated protein RP/EB family member 3; EB3; End-binding protein 3

Application Instructions

Application table	Application	Dilution
	WB	0.1 - 1.0 µg/ml
Application Note	WB: Recommend incubate at RT for 1h. * The dilutions indicate recommended starting dilutions and the optimal dilutions or concentrations should be determined by the scientist.	

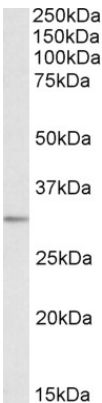
Properties

Form	Liquid
Purification	Purified from goat serum by antigen affinity chromatography.
Buffer	Tris saline (pH 7.3), 0.02% Sodium azide and 0.5% BSA.
Preservative	0.02% Sodium azide
Stabilizer	0.5% BSA
Concentration	0.5 mg/ml
Storage instruction	For continuous use, store undiluted antibody at 2-8°C for up to a week. For long-term storage, aliquot and store at -20°C or below. Storage in frost free freezers is not recommended. Avoid repeated freeze/thaw cycles. Suggest spin the vial prior to opening. The antibody solution should be gently mixed before use.
Note	For laboratory research only, not for drug, diagnostic or other use.

Bioinformation

Database links	GeneID: 100732 Mouse GeneID: 22924 Human Swiss-port # Q6PER3 Mouse Swiss-port # Q9UPY8 Human
Background	The protein encoded by this gene is a member of the RP/EB family of genes. The protein localizes to the cytoplasmic microtubule network and binds APCL, a homolog of the adenomatous polyposis coli tumor suppressor gene. [provided by RefSeq, Jul 2008]
Research Area	Cancer antibody; Cell Biology and Cellular Response antibody; Signaling Transduction antibody
Calculated Mw	32 kDa

Images



ARG65114 anti-MAPRE3 antibody WB image

Western Blot: Human Brain (Amygdala) lysate (35 µg protein in RIPA buffer) stained with ARG65114 anti-MAPRE3 antibody at 0.1 µg/ml dilution.



ARG65114 anti-MAPRE3 antibody WB image

Western blot: 35 µg of Mouse brain lysate (in RIPA buffer) stained with ARG65114 anti-MAPRE3 antibody at 0.3 µg/ml dilution and incubated at RT for 1 hour.