

## ARG65216 anti-PAX4 antibody

Package: 100 µg  
Store at: -20°C

### Summary

Product Description	Goat Polyclonal antibody recognizes PAX4
Tested Reactivity	Hu, Ms
Predict Reactivity	Dog, Rat
Tested Application	WB
Host	Goat
Clonality	Polyclonal
Isotype	IgG
Target Name	PAX4
Species	Human
Immunogen	C-GKLATATSLPEDTVR
Conjugation	Un-conjugated
Alternate Names	MODY9; KPD; Paired box protein Pax-4

### Application Instructions

Application table	Application	Dilution
	WB	0.2 - 0.6 µg/ml
Application Note	WB: Recommend incubate at RT for 1h. * The dilutions indicate recommended starting dilutions and the optimal dilutions or concentrations should be determined by the scientist.	

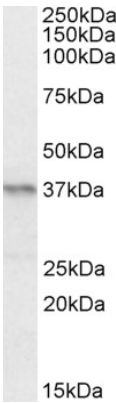
### Properties

Form	Liquid
Purification	Purified from goat serum by antigen affinity chromatography.
Buffer	Tris saline (pH 7.3), 0.02% Sodium azide and 0.5% BSA.
Preservative	0.02% Sodium azide
Stabilizer	0.5% BSA
Concentration	0.5 mg/ml
Storage instruction	For continuous use, store undiluted antibody at 2-8°C for up to a week. For long-term storage, aliquot and store at -20°C or below. Storage in frost free freezers is not recommended. Avoid repeated freeze/thaw cycles. Suggest spin the vial prior to opening. The antibody solution should be gently mixed before use.
Note	For laboratory research only, not for drug, diagnostic or other use.

Bioinformation

Database links	<a href="#">GeneID: 18506 Mouse</a> <a href="#">GeneID: 5078 Human</a> <a href="#">Swiss-port # O43316 Human</a> <a href="#">Swiss-port # P32115 Mouse</a>
Background	This gene is a member of the paired box (PAX) family of transcription factors. Members of this gene family typically contain a paired box domain, an octapeptide, and a paired-type homeodomain. These genes play critical roles during fetal development and cancer growth. The paired box 4 gene is involved in pancreatic islet development and mouse studies have demonstrated a role for this gene in differentiation of insulin-producing beta cells. [provided by RefSeq, Jul 2008]
Research Area	Developmental Biology antibody; Gene Regulation antibody
Calculated Mw	38 kDa

Images



ARG65216 anti-PAX4 antibody WB image

Western Blot: Mouse Pancreas lysate (35 µg protein in RIPA buffer) stained with ARG65216 anti-PAX4 antibody at 0.2 µg/ml dilution.