

## ARG65235 anti-NIPBL antibody

Package: 100 µg  
Store at: -20°C

### Summary

Product Description	Goat Polyclonal antibody recognizes NIPBL
Tested Reactivity	Hu
Predict Reactivity	Ms, Rat, Cow, Dog
Tested Application	ICC/IF, IHC-P
Specificity	This antibody is expected to recognize both reported isoforms (NP_597677.2; NP_056199.2).
Host	Goat
Clonality	Polyclonal
Isotype	IgG
Target Name	NIPBL
Species	Human
Immunogen	C-RPDSPRVKQGDSNK
Conjugation	Un-conjugated
Alternate Names	CDLS1; SCC2 homolog; IDN3; Scc2; CDLS; Delangin; Nipped-B-like protein; IDN3-B

### Application Instructions

Application table	Application	Dilution
	ICC/IF	10 µg/ml
	IHC-P	2 µg/ml
Application Note	IHC-P: Antigen Retrieval: Microwaved tissue section in Citrate buffer (pH 6.0). * The dilutions indicate recommended starting dilutions and the optimal dilutions or concentrations should be determined by the scientist.	

### Properties

Form	Liquid
Purification	Purified from goat serum by antigen affinity chromatography.
Buffer	Tris saline (pH 7.3), 0.02% Sodium azide and 0.5% BSA.
Preservative	0.02% Sodium azide
Stabilizer	0.5% BSA
Concentration	0.5 mg/ml
Storage instruction	For continuous use, store undiluted antibody at 2-8°C for up to a week. For long-term storage, aliquot and store at -20°C or below. Storage in frost free freezers is not recommended. Avoid repeated freeze/thaw cycles. Suggest spin the vial prior to opening. The antibody solution should be gently mixed before use.

## Bioinformation

### Database links

[GeneID: 25836 Human](#)

[Swiss-port # Q6KC79 Human](#)

### Background

This gene encodes the homolog of the *Drosophila melanogaster* Nipped-B gene product and fungal Scc2-type sister chromatid cohesion proteins. The *Drosophila* protein facilitates enhancer-promoter communication of remote enhancers and plays a role in developmental regulation. It is also homologous to a family of chromosomal adherins with broad roles in sister chromatid cohesion, chromosome condensation, and DNA repair. The human protein has a bipartite nuclear targeting sequence and a putative HEAT repeat. Condensins, cohesins and other complexes with chromosome-related functions also contain HEAT repeats. Mutations in this gene result in Cornelia de Lange syndrome, a disorder characterized by dysmorphic facial features, growth delay, limb reduction defects, and mental retardation. Two transcript variants encoding different isoforms have been found for this gene. [provided by RefSeq, Jul 2008]

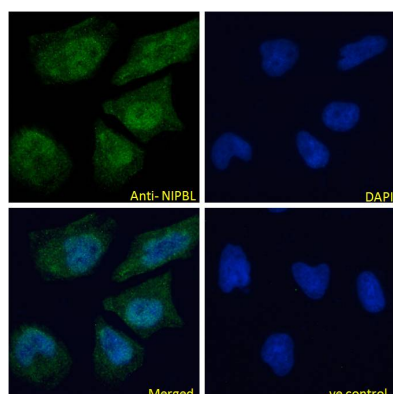
### Research Area

Gene Regulation antibody

### Calculated Mw

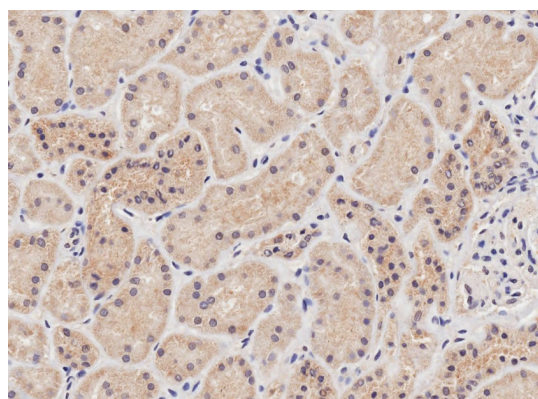
316 kDa

## Images



ARG65235 anti-NIPBL antibody ICC/IF image

Immunofluorescence: Paraformaldehyde fixed HeLa cells permeabilized with 0.15% Triton. Cells were stained with ARG65235 anti-NIPBL antibody (green) at 10 µg/ml dilution for 1 hour. DAPI (blue) for nuclear staining. Negative control: Unimmunized goat IgG (green) at 10 µg/ml dilution.



ARG65235 anti-NIPBL antibody IHC-P image

Immunohistochemistry: Paraffin-embedded Human kidney tissue. Antigen Retrieval: Microwaved tissue section in Citrate buffer (pH 6.0). The tissue section was stained with ARG65235 anti-NIPBL antibody at 2 µg/ml dilution followed by HRP-staining.