

## ARG65236 anti-Cullin 2 antibody

Package: 100 µg  
Store at: -20°C

### Summary

Product Description	Goat Polyclonal antibody recognizes Cullin 2
Tested Reactivity	Hu, Ms
Predict Reactivity	Cow, Rat, Dog
Tested Application	IHC-P, WB
Host	Goat
Clonality	Polyclonal
Isotype	IgG
Target Name	Cullin 2
Species	Human
Immunogen	C-QYIERSQASADE
Conjugation	Un-conjugated
Alternate Names	Cullin-2; CUL-2

### Application Instructions

Application table	Application	Dilution
	IHC-P	3 - 5 µg/ml
	WB	1 - 3 µg/ml
Application Note	WB: Recommend incubate at RT for 1h. IHC-P: Antigen Retrieval: Steam tissue section in Citrate buffer (pH 6.0). * The dilutions indicate recommended starting dilutions and the optimal dilutions or concentrations should be determined by the scientist.	

### Properties

Form	Liquid
Purification	Purified from goat serum by antigen affinity chromatography.
Buffer	Tris saline (pH 7.3), 0.02% Sodium azide and 0.5% BSA.
Preservative	0.02% Sodium azide
Stabilizer	0.5% BSA
Concentration	0.5 mg/ml
Storage instruction	For continuous use, store undiluted antibody at 2-8°C for up to a week. For long-term storage, aliquot and store at -20°C or below. Storage in frost free freezers is not recommended. Avoid repeated freeze/thaw cycles. Suggest spin the vial prior to opening. The antibody solution should be gently mixed before use.

Note

For laboratory research only, not for drug, diagnostic or other use.

Bioinformation

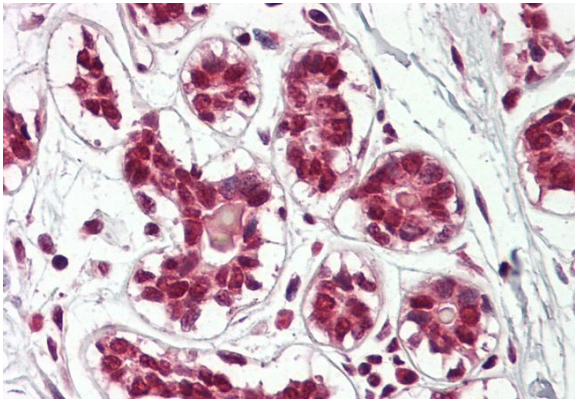
Database links	<a href="#">GeneID: 71745 Mouse</a> <a href="#">GeneID: 8453 Human</a> <a href="#">Swiss-port # Q13617 Human</a> <a href="#">Swiss-port # Q9D4H8 Mouse</a>
Gene Symbol	CUL2
Gene Full Name	cullin 2
Function	Core component of multiple cullin-RING-based ECS (ElonginB/C-CUL2/5-SOCS-box protein) E3 ubiquitin-protein ligase complexes, which mediate the ubiquitination of target proteins. May serve as a rigid scaffold in the complex and may contribute to catalysis through positioning of the substrate and the ubiquitin-conjugating enzyme. The E3 ubiquitin-protein ligase activity of the complex is dependent on the neddylation of the cullin subunit and is inhibited by the association of the deneddylated cullin subunit with TIP120A/CAND1 (By similarity). The functional specificity of the ECS complex depends on the substrate recognition component. ECS(VHL) mediates the ubiquitination of hypoxia-inducible factor (HIF). [UniProt]
Research Area	Cancer antibody; Cell Biology and Cellular Response antibody; Cell Death antibody
Calculated Mw	87 kDa
PTM	Neddylated; which enhances the ubiquitination activity of ECS (Elongin BC-CUL2/5-SOCS-box protein) E3 ubiquitin-protein ligase complexes. CBC(VHL) complex formation seems to promote neddylation. Deneddylated via its interaction with the COP9 signalosome (CSN) complex (By similarity).

Images



ARG65236 anti-Cullin 2 antibody WB image

Western blot: NIH3T3 lysate (35 µg protein in RIPA buffer) stained with ARG65236 anti-Cullin 2 antibody at 1 µg/ml dilution.



ARG65236 anti-Cullin 2 antibody IHC-P image

Immunohistochemistry: Paraffin-embedded Human breast tissue.  
Antigen Retrieval: Steam tissue section in Citrate buffer (pH 6.0). The tissue section was stained with ARG65236 anti-Cullin 2 antibody at 3.75 µg/ml dilution followed by AP-staining.