

## ARG65262 anti-PBX1 antibody

Package: 100 µg  
Store at: -20°C

### Summary

Product Description	Goat Polyclonal antibody recognizes PBX1
Tested Reactivity	Hu, Ms, Rat
Predict Reactivity	Dog
Tested Application	WB
Host	Goat
Clonality	Polyclonal
Isotype	IgG
Target Name	PBX1
Species	Human
Immunogen	C-ATNVAHGSQANSPS
Conjugation	Un-conjugated
Alternate Names	Homeobox protein PBX1; Pre-B-cell leukemia transcription factor 1; Homeobox protein PRL

### Application Instructions

Application table	Application	Dilution
	WB	0.3 - 1 µg/ml
Application Note	WB: Recommend incubate at RT for 1h. * The dilutions indicate recommended starting dilutions and the optimal dilutions or concentrations should be determined by the scientist.	

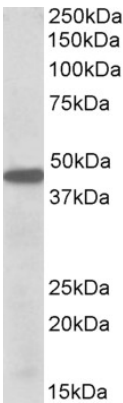
### Properties

Form	Liquid
Purification	Purified from goat serum by antigen affinity chromatography.
Buffer	Tris saline (pH 7.3), 0.02% Sodium azide and 0.5% BSA.
Preservative	0.02% Sodium azide
Stabilizer	0.5% BSA
Concentration	0.5 mg/ml
Storage instruction	For continuous use, store undiluted antibody at 2-8°C for up to a week. For long-term storage, aliquot and store at -20°C or below. Storage in frost free freezers is not recommended. Avoid repeated freeze/thaw cycles. Suggest spin the vial prior to opening. The antibody solution should be gently mixed before use.
Note	For laboratory research only, not for drug, diagnostic or other use.

Bioinformation

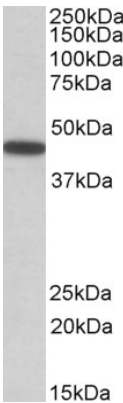
Database links	<a href="#">GeneID: 18514 Mouse</a> <a href="#">GeneID: 5087 Human</a> <a href="#">Swiss-port # P40424 Human</a> <a href="#">Swiss-port # P41778 Mouse</a>
Background	This gene encodes a nuclear protein that belongs to the PBX homeobox family of transcriptional factors. Studies in mice suggest that this gene may be involved in the regulation of osteogenesis, and required for skeletal patterning and programming. A chromosomal translocation, t(1;19) involving this gene and TCF3/E2A gene, is associated with pre-B-cell acute lymphoblastic leukemia. The resulting fusion protein, in which the DNA binding domain of E2A is replaced by the DNA binding domain of this protein, transforms cells by constitutively activating transcription of genes regulated by the PBX protein family. Alternatively spliced transcript variants encoding different isoforms have been found for this gene. [provided by RefSeq, Mar 2011]
Research Area	Developmental Biology antibody; Gene Regulation antibody
Calculated Mw	47 kDa

Images



ARG65262 anti-PBX1 antibody WB image

Western Blot: K562 lysate (35 µg protein in RIPA buffer) stained with ARG65262 anti-PBX1 antibody at 0.5 µg/ml dilution.



ARG65262 anti-PBX1 antibody WB image

Western Blot: Mouse Eye lysate (35 µg protein in RIPA buffer) stained with ARG65262 anti-PBX1 antibody at 0.5 µg/ml dilution.