

ARG65271 anti-TIPRL antibody

Package: 100 µg
Store at: -20°C

Summary

Product Description	Goat Polyclonal antibody recognizes TIPRL
Tested Reactivity	Hu
Predict Reactivity	Ms, Rat, Cow, Dog
Tested Application	IHC-P, WB
Specificity	This antibody is expected to recognize isoform 1 (NP_690866.1).
Host	Goat
Clonality	Polyclonal
Isotype	IgG
Target Name	TIPRL
Species	Human
Immunogen	C-RIDPNPADSQKSTQ
Conjugation	Un-conjugated
Alternate Names	Type 2A-interacting protein; Putative MAPK-activating protein PM10; TIP; TIP41-like protein; TIP41

Application Instructions

Application table	Application	Dilution
	IHC-P	3 - 5 µg/ml
	WB	1 - 3 µg/ml
Application Note	WB: Recommend incubate at RT for 1h. IHC-P: Antigen Retrieval: Steam tissue section in Citrate buffer (pH 6.0). * The dilutions indicate recommended starting dilutions and the optimal dilutions or concentrations should be determined by the scientist.	

Properties

Form	Liquid
Purification	Purified from goat serum by antigen affinity chromatography.
Buffer	Tris saline (pH 7.3), 0.02% Sodium azide and 0.5% BSA.
Preservative	0.02% Sodium azide
Stabilizer	0.5% BSA
Concentration	0.5 mg/ml
Storage instruction	For continuous use, store undiluted antibody at 2-8°C for up to a week. For long-term storage, aliquot and store at -20°C or below. Storage in frost free freezers is not recommended. Avoid repeated freeze/thaw cycles. Suggest spin the vial prior to opening. The antibody solution should be gently mixed

before use.

Note

For laboratory research only, not for drug, diagnostic or other use.

Bioinformation

Database links

[GeneID: 261726 Human](#)

[Swiss-port # O75663 Human](#)

Background

TIPRL is an inhibitory regulator of protein phosphatase-2A (PP2A) (see PPP2CA; MIM 176915), PP4 (see PPP4C; MIM 602035), and PP6 (see PPP6C; MIM 612725) (McConnell et al., 2007 [PubMed 17384681]).[supplied by OMIM, Nov 2010]

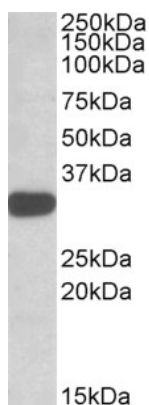
Research Area

Signaling Transduction antibody

Calculated Mw

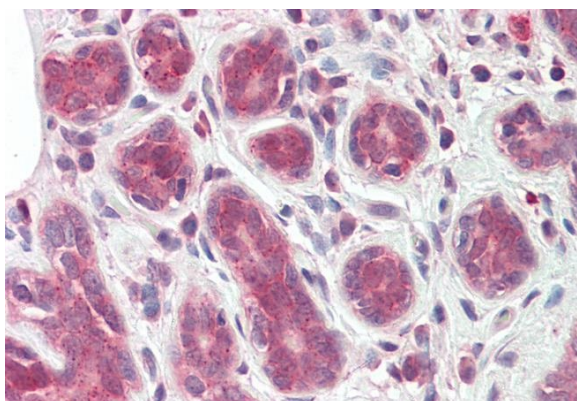
31 kDa

Images



ARG65271 anti-TIPRL antibody WB image

Western Blot: K562 lysate (35 µg protein in RIPA buffer) stained with ARG65271 anti-TIPRL antibody at 1 µg/ml dilution.



ARG65271 anti-TIPRL antibody IHC-P image

Immunohistochemistry: Paraffin-embedded Human breast tissue. Antigen Retrieval: Steam tissue section in Citrate buffer (pH 6.0). The tissue section was stained with ARG65271 anti-TIPRL antibody at 3.75 µg/ml dilution followed by AP-staining.