

**ARG65273**  
**anti-IGF2BP1 / IMP1 antibody**Package: 100 µg  
Store at: -20°C

### Summary

Product Description	Goat Polyclonal antibody recognizes IGF2BP1 / IMP1.
Tested Reactivity	Hu
Predict Reactivity	Ms, Rat, Cow, Dog
Tested Application	IHC-P, WB
Specificity	This antibody is expected to recognize both reported isoforms (NP_006537.3; NP_001153895.1).
Host	Goat
Clonality	Polyclonal
Isotype	IgG
Target Name	IGF2BP1 / IMP1
Species	Human
Immunogen	C-EKVFAEHKISYSQG
Conjugation	Un-conjugated
Alternate Names	VICKZ1; CRDBP; IMP1; IMP-1; ZBP-1; ZBP1; CRD-BP; VICKZ family member 1; IGF2 mRNA-binding protein 1; IGF-II mRNA-binding protein 1; Zipcode-binding protein 1; Coding region determinant-binding protein; Insulin-like growth factor 2 mRNA-binding protein 1

### Application Instructions

Application table	Application	Dilution
	IHC-P	3 - 5 µg/ml
	WB	0.3 - 1 µg/ml
Application Note	WB: Recommend incubate at RT for 1h. IHC-P: Antigen Retrieval: Steam tissue section in Citrate buffer (pH 6.0). * The dilutions indicate recommended starting dilutions and the optimal dilutions or concentrations should be determined by the scientist.	

### Properties

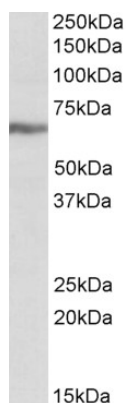
Form	Liquid
Purification	Purified from goat serum by antigen affinity chromatography.
Buffer	Tris saline (pH 7.3), 0.02% Sodium azide and 0.5% BSA.
Preservative	0.02% Sodium azide
Stabilizer	0.5% BSA
Concentration	0.5 mg/ml

Storage instruction	For continuous use, store undiluted antibody at 2-8°C for up to a week. For long-term storage, aliquot and store at -20°C or below. Storage in frost free freezers is not recommended. Avoid repeated freeze/thaw cycles. Suggest spin the vial prior to opening. The antibody solution should be gently mixed before use.
Note	For laboratory research only, not for drug, diagnostic or other use.

## Bioinformation

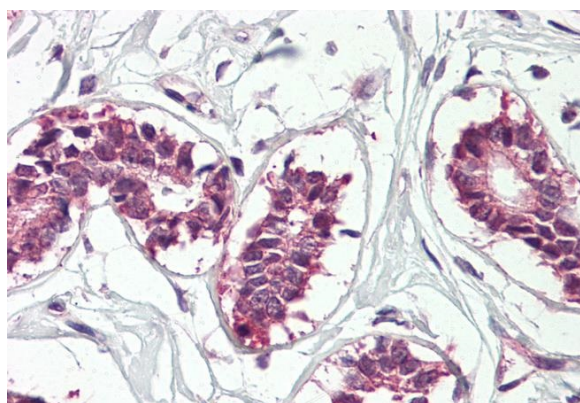
Database links	<a href="#">GeneID: 10642 Human</a> <a href="#">Swiss-port # Q9NZI8 Human</a>
Background	This gene encodes a member of the insulin-like growth factor 2 mRNA-binding protein family. The protein encoded by this gene contains four K homology domains and two RNA recognition motifs. It functions by binding to the mRNAs of certain genes, including insulin-like growth factor 2, beta-actin and beta-transducin repeat-containing protein, and regulating their translation. Two transcript variants encoding different isoforms have been found for this gene. [provided by RefSeq, May 2009]
Research Area	Gene Regulation antibody
Calculated Mw	63 kDa
PTM	Phosphorylated. Phosphorylation may impair association with ACTB mRNA and hence abolishes translational repression (By similarity).

## Images



ARG65273 anti-IGF2BP1 / IMP1 antibody WB image

Western Blot: K562 lysate (35 µg protein in RIPA buffer) stained with ARG65273 anti-IGF2BP1 / IMP1 antibody at 0.3 µg/ml dilution.



ARG65273 anti-IGF2BP1 / IMP1 antibody IHC-P image

Immunohistochemistry: Paraffin-embedded Human breast tissue. Antigen Retrieval: Steam tissue section in Citrate buffer (pH 6.0). The tissue section was stained with ARG65273 anti-IGF2BP1 / IMP1 antibody at 3.75 µg/ml dilution followed by AP-staining.