

ARG65286 anti-ETFB antibody

Package: 100 µg
Store at: -20°C

Summary

Product Description	Goat Polyclonal antibody recognizes ETFB
Tested Reactivity	Hu, Ms, Rat
Predict Reactivity	Cow, Dog
Tested Application	IHC-P, WB
Specificity	This antibody is expected to recognize both reported isoforms (NP_001976.1; NP_001014763.1). Amino acid numbering in the name above refers to NP_001976.1).
Host	Goat
Clonality	Polyclonal
Isotype	IgG
Target Name	ETFB
Species	Human
Immunogen	C-QVTLEGDKLKVERE
Conjugation	Un-conjugated
Alternate Names	MADD; FP585; Beta-ETF; Electron transfer flavoprotein subunit beta

Application Instructions

Application table	Application	Dilution
	IHC-P	3 - 5 µg/ml
	WB	1 - 3 µg/ml
Application Note	IHC-P: Antigen Retrieval: Steam tissue section in Citrate buffer (pH 6.0). WB: Recommend incubate at RT for 1h. * The dilutions indicate recommended starting dilutions and the optimal dilutions or concentrations should be determined by the scientist.	

Properties

Form	Liquid
Purification	Purified from goat serum by antigen affinity chromatography.
Buffer	Tris saline (pH 7.3), 0.02% Sodium azide and 0.5% BSA.
Preservative	0.02% Sodium azide
Stabilizer	0.5% BSA
Concentration	0.5 mg/ml
Storage instruction	For continuous use, store undiluted antibody at 2-8°C for up to a week. For long-term storage, aliquot and store at -20°C or below. Storage in frost free freezers is not recommended. Avoid repeated

freeze/thaw cycles. Suggest spin the vial prior to opening. The antibody solution should be gently mixed before use.

Note

For laboratory research only, not for drug, diagnostic or other use.

Bioinformation

Background

This gene encodes electron-transfer-flavoprotein, beta polypeptide, which shuttles electrons between primary flavoprotein dehydrogenases involved in mitochondrial fatty acid and amino acid catabolism and the membrane-bound electron transfer flavoprotein ubiquinone oxidoreductase. The gene deficiencies have been implicated in type II glutaricaciduria. Alternatively spliced transcript variants have been found for this gene. [provided by RefSeq, Jul 2008]

Research Area

Cancer antibody; Metabolism antibody; Signaling Transduction antibody

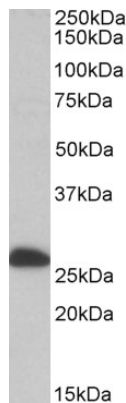
Calculated Mw

28 kDa

PTM

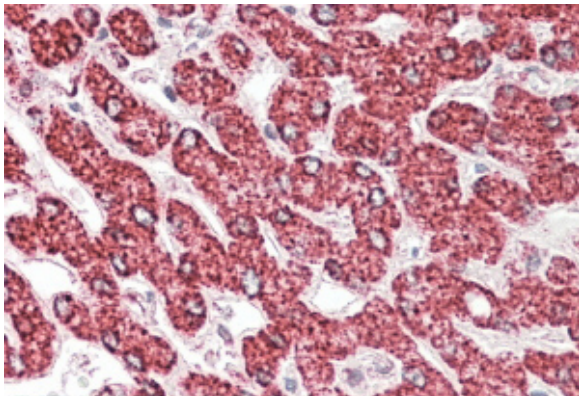
Methylated. Trimethylation at Lys-200 and Lys-203 may negatively regulate the activity in electron transfer from Acyl-CoA dehydrogenases.

Images



ARG65286 anti-ETFB antibody WB image

Western blot: Human Liver lysate (35 µg protein in RIPA buffer) stained with ARG65286 anti-ETFB antibody at 0.1 µg/ml dilution.



ARG65286 anti-ETFB antibody IHC-P image

Immunohistochemistry: Paraffin embedded Human Liver. (Steamed antigen retrieval with citrate buffer pH 6) stained with ARG65286 anti-ETFB antibody at 3.8 µg/ml dilution followed by AP-staining.