

ARG65287 anti-ETFA antibody

Package: 100 µg
Store at: -20°C

Summary

Product Description	Goat Polyclonal antibody recognizes ETFA
Tested Reactivity	Hu, Ms, Rat
Predict Reactivity	Cow, Dog
Tested Application	WB
Specificity	This antibody is expected to recognize both reported isoforms (NP_000117.1; NP_001121188.1).
Host	Goat
Clonality	Polyclonal
Isotype	IgG
Target Name	ETFA
Species	Human
Immunogen	C-QVADYGIVADLFK
Conjugation	Un-conjugated
Alternate Names	Electron transfer flavoprotein subunit alpha, mitochondrial; MADD; EMA; GA2; Alpha-ETF

Application Instructions

Application table	Application	Dilution
	WB	0.05 - 0.2 µg/ml
Application Note	WB: Recommend incubate at RT for 1h. * The dilutions indicate recommended starting dilutions and the optimal dilutions or concentrations should be determined by the scientist.	

Properties

Form	Liquid
Purification	Purified from goat serum by antigen affinity chromatography.
Buffer	Tris saline (pH 7.3), 0.02% Sodium azide and 0.5% BSA.
Preservative	0.02% Sodium azide
Stabilizer	0.5% BSA
Concentration	0.5 mg/ml
Storage instruction	For continuous use, store undiluted antibody at 2-8°C for up to a week. For long-term storage, aliquot and store at -20°C or below. Storage in frost free freezers is not recommended. Avoid repeated freeze/thaw cycles. Suggest spin the vial prior to opening. The antibody solution should be gently mixed before use.

Note

For laboratory research only, not for drug, diagnostic or other use.

Bioinformation

Background

ETFA participates in catalyzing the initial step of the mitochondrial fatty acid beta-oxidation. It shuttles electrons between primary flavoprotein dehydrogenases and the membrane-bound electron transfer flavoprotein ubiquinone oxidoreductase. Defects in electron-transfer-flavoprotein have been implicated in type II glutaricaciduria in which multiple acyl-CoA dehydrogenase deficiencies result in large excretion of glutaric, lactic, ethylmalonic, butyric, isobutyric, 2-methyl-butyric, and isovaleric acids. Two transcript variants encoding different isoforms have been found for this gene. [provided by RefSeq, Jul 2008]

Research Area

Cancer antibody; Metabolism antibody; Signaling Transduction antibody

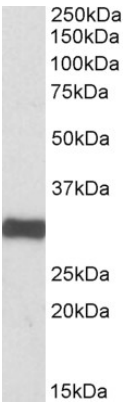
Calculated Mw

35 kDa

PTM

The N-terminus is blocked.

Images



ARG65287 anti-ETFA antibody WB image

Western Blot: Human Heart lysate (35 µg protein in RIPA buffer) stained with ARG65287 anti-ETFA antibody at 0.1 µg/ml dilution.