

## ARG65298 anti-Siglec 6 antibody

Package: 100 µg  
Store at: -20°C

### Summary

|                     |   |
|---------------------|---|
| Product Description | Goat Polyclonal antibody recognizes Siglec 6  |
| Tested Reactivity   | Hu  |
| Tested Application  | WB  |
| Specificity         | This antibody is expected to recognize all reported isoforms (NP_001236.4; NP_942142.3; NP_942143.3).   |
| Host                | Goat  |
| Clonality           | Polyclonal  |
| Isotype             | IgG   |
| Target Name         | Siglec 6  |
| Species             | Human   |
| Immunogen           | C-KWMKYGYTSSK   |
| Conjugation         | Un-conjugated   |
| Alternate Names     | CDW327; CDw327; OBBP1; CD33L; Siglec-6; Sialic acid-binding Ig-like lectin 6; CD antigen CD327; CD33 antigen-like 1; CD33L1; OB-BP1; CD33L2; CD327; Obesity-binding protein 1 |

### Application Instructions

| Application table | Application  | Dilution        |
|-------------------|--|-----------------|
|                   | WB   | 0.5 - 1.5 µg/ml |
| Application Note  | WB: Recommend incubate at RT for 1h.<br>* The dilutions indicate recommended starting dilutions and the optimal dilutions or concentrations should be determined by the scientist. |                 |

### Properties

|                     |  |
|---------------------|--|
| Form                | Liquid   |
| Purification        | Purified from goat serum by antigen affinity chromatography.   |
| Buffer              | Tris saline (pH 7.3), 0.02% Sodium azide and 0.5% BSA.   |
| Preservative        | 0.02% Sodium azide   |
| Stabilizer          | 0.5% BSA   |
| Concentration       | 0.5 mg/ml  |
| Storage instruction | For continuous use, store undiluted antibody at 2-8°C for up to a week. For long-term storage, aliquot and store at -20°C or below. Storage in frost free freezers is not recommended. Avoid repeated freeze/thaw cycles. Suggest spin the vial prior to opening. The antibody solution should be gently mixed before use. |

Note For laboratory research only, not for drug, diagnostic or other use.

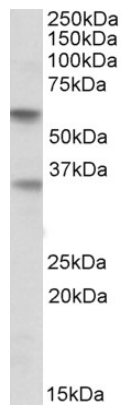
## Bioinformation

---

|                |  |
|----------------|--|
| Database links | <a href="#">GeneID: 946 Human</a><br><a href="#">Swiss-port # O43699 Human</a>   |
| Gene Symbol    | SIGLEC6  |
| Gene Full Name | sialic acid binding Ig-like lectin 6   |
| Function       | Putative adhesion molecule that mediates sialic-acid dependent binding to cells. Binds to alpha-2,6-linked sialic acid. The sialic acid recognition site may be masked by cis interactions with sialic acids on the same cell surface. [UniProt] |
| Research Area  | Immune System antibody   |
| Calculated Mw  | 50 kDa   |

## Images

---



ARG65298 anti-Siglec 6 antibody WB image

Western blot: Human Placenta lysate (35 µg protein in RIPA buffer) stained with ARG65298 anti-Siglec 6 antibody at 0.5 µg/ml dilution.