

## ARG65300 anti-UCHL1 / PGP9.5 antibody

Package: 100 µg  
Store at: -20°C

### Summary

Product Description	Goat Polyclonal antibody recognizes UCHL1 / PGP9.5
Tested Reactivity	Hu, Ms, Rat
Predict Reactivity	Cow, Dog, Pig
Tested Application	IHC-P, WB
Host	Goat
Clonality	Polyclonal
Isotype	IgG
Target Name	UCHL1 / PGP9.5
Species	Human
Immunogen	C-QHENFRKKQIE
Conjugation	Un-conjugated
Alternate Names	PGP95; UCH-L1; PGP9.5; PARK5; Ubiquitin thioesterase L1; HEL-117; Neuron cytoplasmic protein 9.5; Uch-L1; EC 6.-.-.-; PGP 9.5; Ubiquitin carboxyl-terminal hydrolase isozyme L1; NDGOA; EC 3.4.19.12

### Application Instructions

Application table	Application	Dilution
	IHC-P	2.5 µg/ml
	WB	0.01 - 0.03 µg/ml
Application Note	WB: Recommend incubate at RT for 1h. IHC-P: Antigen Retrieval: Steam tissue section in Citrate buffer (pH 6.0). * The dilutions indicate recommended starting dilutions and the optimal dilutions or concentrations should be determined by the scientist.	

### Properties

Form	Liquid
Purification	Purified from goat serum by antigen affinity chromatography.
Buffer	Tris saline (pH 7.3), 0.02% Sodium azide and 0.5% BSA.
Preservative	0.02% Sodium azide
Stabilizer	0.5% BSA
Concentration	0.5 mg/ml
Storage instruction	For continuous use, store undiluted antibody at 2-8°C for up to a week. For long-term storage, aliquot and store at -20°C or below. Storage in frost free freezers is not recommended. Avoid repeated freeze/thaw cycles. Suggest spin the vial prior to opening. The antibody solution should be gently mixed

before use.

#### Note

For laboratory research only, not for drug, diagnostic or other use.

## Bioinformation

### Background

The protein encoded by this gene belongs to the peptidase C12 family. This enzyme is a thiol protease that hydrolyzes a peptide bond at the C-terminal glycine of ubiquitin. This gene is specifically expressed in the neurons and in cells of the diffuse neuroendocrine system. Mutations in this gene may be associated with Parkinson disease.[provided by RefSeq, Sep 2009]

### Research Area

Cell Biology and Cellular Response antibody; Gene Regulation antibody; Neuroscience antibody

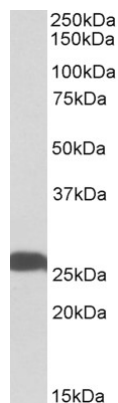
### Calculated Mw

25 kDa

### PTM

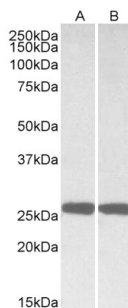
O-glycosylated.

## Images



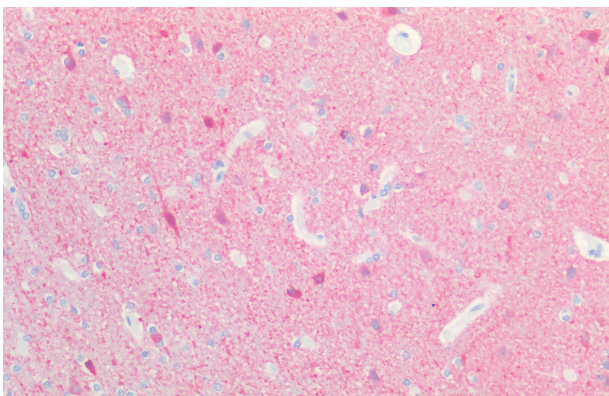
ARG65300 anti-UCHL1 / PGP9.5 antibody WB image

Western blot: Human Hippocampus lysate (35 µg protein in RIPA buffer) stained with ARG65300 anti-UCHL1 / PGP9.5 antibody at 0.01 µg/ml dilution.



ARG65300 anti-UCHL1 / PGP9.5 antibody WB image

Western blot: Mouse (A) and Rat (B) Brain lysates (35 µg protein in RIPA buffer) stained with ARG65300 anti-UCHL1 / PGP9.5 antibody at 0.01 µg/ml dilution.



ARG65300 anti-UCHL1 / PGP9.5 antibody IHC-P image

Immunohistochemistry: Paraffin-embedded Human cortex tissue. Antigen Retrieval: Steam tissue section in Citrate buffer (pH 6.0). The tissue section was stained with ARG65300 anti-UCHL1 / PGP9.5 antibody at 2.5 µg/ml dilution followed by AP-staining.