

## ARG65308 anti-SRGAP2 antibody

Package: 100 µg  
Store at: -20°C

### Summary

Product Description	Goat Polyclonal antibody recognizes SRGAP2
Tested Reactivity	Hu, Rat
Predict Reactivity	Ms, Cow, Dog
Tested Application	ICC/IF, WB
Specificity	This antibody is expected to recognize isoform a (NP_056141.2).
Host	Goat
Clonality	Polyclonal
Isotype	IgG
Target Name	SRGAP2
Species	Human
Immunogen	C-KQEDRQTPRSPDST
Conjugation	Un-conjugated
Alternate Names	FNBP2; SRGAP3; srGAP2; ARHGAP34; SLIT-ROBO Rho GTPase-activating protein 2; Formin-binding protein 2; Rho GTPase-activating protein 34; SRGAP2A

### Application Instructions

Application table	Application	Dilution
	ICC/IF	Assay - dependent
	WB	0.1 - 0.3 µg/ml
Application Note	WB: Recommend incubate at RT for 1h. * The dilutions indicate recommended starting dilutions and the optimal dilutions or concentrations should be determined by the scientist.	

### Properties

Form	Liquid
Purification	Purified from goat serum by antigen affinity chromatography.
Buffer	Tris saline (pH 7.3), 0.02% Sodium azide and 0.5% BSA.
Preservative	0.02% Sodium azide
Stabilizer	0.5% BSA
Concentration	0.5 mg/ml
Storage instruction	For continuous use, store undiluted antibody at 2-8°C for up to a week. For long-term storage, aliquot and store at -20°C or below. Storage in frost free freezers is not recommended. Avoid repeated freeze/thaw cycles. Suggest spin the vial prior to opening. The antibody solution should be gently mixed

before use.

#### Note

For laboratory research only, not for drug, diagnostic or other use.

## Bioinformation

#### Database links

[GeneID: 23380 Human](#)

[GeneID: 360840 Rat](#)

[Swiss-port # D4A208 Rat](#)

[Swiss-port # O75044 Human](#)

#### Background

This locus encodes a member of the SLIT-ROBO Rho GTPase activating protein family. The encoded protein stimulates GTPase activity of Rac1, and plays a role in cortical neuron development. This locus has several paralogs on human chromosome 1 resulting from segmental duplication. While this locus itself is conserved among various species, the paralogs are found only in the genus Homo, and not in the genomes of non-human great apes. Alternatively spliced transcript variants have been described for this locus. [provided by RefSeq, Jul 2014]

#### Research Area

Neuroscience antibody; Signaling Transduction antibody

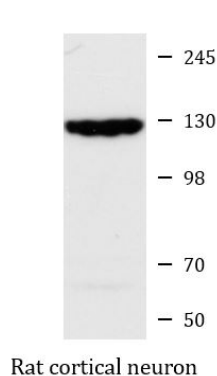
#### Calculated Mw

121 kDa

#### PTM

Methylation at Arg-927 is required for the stimulation of cell migration, dimerization and localization at the plasma membrane protrusions.

## Images



ARG65308 anti-SRGAP2 antibody WB image

Western blot: 35 µg of Rat cortical neuron lysate stained with ARG65308 anti-SRGAP2 antibody at 0.1 µg/ml dilution and incubated for 1 hour.