

## ARG65309 anti-FANCE antibody

Package: 100 µg  
Store at: -20°C

### Summary

Product Description	Goat Polyclonal antibody recognizes FANCE
Tested Reactivity	Hu
Predict Reactivity	Cow
Tested Application	IHC-P
Host	Goat
Clonality	Polyclonal
Isotype	IgG
Target Name	FANCE
Species	Human
Immunogen	C-EHKSLESADGGS
Conjugation	Un-conjugated
Alternate Names	Protein FACE; FACE; Fanconi anemia group E protein; FAE

### Application Instructions

Application table	Application	Dilution
	IHC-P	3 - 6 µg/ml
Application Note	IHC-P: Antigen Retrieval: Steam tissue section in Citrate buffer (pH 6.0). * The dilutions indicate recommended starting dilutions and the optimal dilutions or concentrations should be determined by the scientist.	

### Properties

Form	Liquid
Purification	Purified from goat serum by antigen affinity chromatography.
Buffer	Tris saline (pH 7.3), 0.02% Sodium azide and 0.5% BSA.
Preservative	0.02% Sodium azide
Stabilizer	0.5% BSA
Concentration	0.5 mg/ml
Storage instruction	For continuous use, store undiluted antibody at 2-8°C for up to a week. For long-term storage, aliquot and store at -20°C or below. Storage in frost free freezers is not recommended. Avoid repeated freeze/thaw cycles. Suggest spin the vial prior to opening. The antibody solution should be gently mixed before use.
Note	For laboratory research only, not for drug, diagnostic or other use.

## Bioinformation

### Database links

[GeneID: 2178 Human](#)

[Swiss-port # Q9HB96 Human](#)

### Background

The Fanconi anemia complementation group (FANC) currently includes FANCA, FANCB, FANCC, FANCD1 (also called BRCA2), FANCD2, FANCE, FANCF, FANCG, FANCI, FANCI (also called BRIP1), FANCL, FANCM and FANCN (also called PALB2). The previously defined group FANCH is the same as FANCA. Fanconi anemia is a genetically heterogeneous recessive disorder characterized by cytogenetic instability, hypersensitivity to DNA crosslinking agents, increased chromosomal breakage, and defective DNA repair. The members of the Fanconi anemia complementation group do not share sequence similarity; they are related by their assembly into a common nuclear protein complex. This gene encodes the protein for complementation group E. [provided by RefSeq, Jul 2008]

### Research Area

Gene Regulation antibody

### Calculated Mw

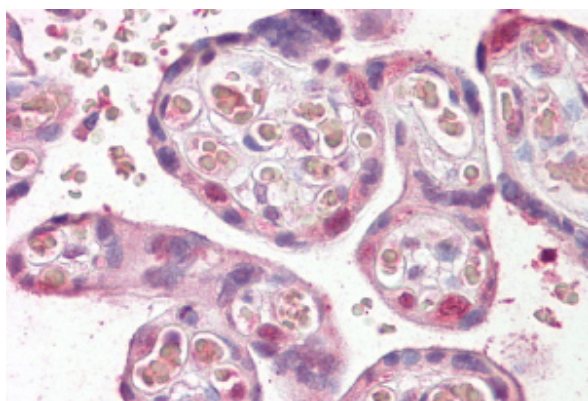
59 kDa

### PTM

Phosphorylated. Phosphorylation by CHEK1 at Thr-346 and Ser-374 regulates its function in DNA cross-links repair.

Ubiquitinated. Phosphorylation by CHEK1 induces polyubiquitination and degradation.

## Images



ARG65309 anti-FANCE antibody IHC-P image

Immunohistochemistry: paraffin embedded Human Placenta. (Steamed antigen retrieval with citrate buffer pH 6) stained with ARG65309 anti-FANCE antibody at 3.8 µg/ml dilution followed by AP-staining.