

## ARG65356 anti-Mycobacterium tuberculosis antigen CFP10 (Rv3874) antibody

Package: 50 µg  
Store at: -20°C

### Summary

Product Description	Rabbit Polyclonal antibody recognizes Mycobacterium tuberculosis antigen CFP10 (Rv3874)
Tested Reactivity	Bacteria
Tested Application	WB
Specificity	The polyclonal antibody reacts with CFP10 (10 kDa culture filtrate antigen ESXB; LHP), a 12,3 kDa antigen encoded by gene Rv3874 of Mycobacterium tuberculosis. The antibody recognizes CFP10 of Mycobacterium tuberculosis H37Rv and Mycobacterium bovis; it reacts also with recombinant antigen produced in Escherichia coli.
Host	Rabbit
Clonality	Polyclonal
Isotype	IgG
Target Name	Mycobacterium tuberculosis antigen CFP10 (Rv3874)
Immunogen	CFP10 (Rv3874) of Mycobacterium tuberculosis
Conjugation	Un-conjugated
Alternate Names	cfp10; lhp

### Application Instructions

Application table	Application	Dilution
	WB	0.5 - 1 µg/ml
Application Note	WB: Under reducing condition. * The dilutions indicate recommended starting dilutions and the optimal dilutions or concentrations should be determined by the scientist.	

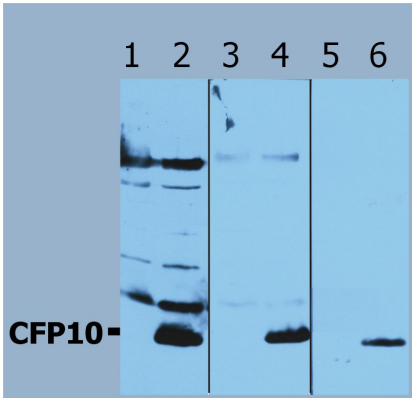
### Properties

Form	Liquid
Purification	Purified from rabbit serum by protein-A affinity chromatography.
Purity	> 95% (by SDS-PAGE)
Buffer	PBS (pH 7.4) and 15 mM Sodium azide
Preservative	15 mM Sodium azide
Concentration	1 mg/ml
Storage instruction	For continuous use, store undiluted antibody at 2-8°C for up to a week. For long-term storage, aliquot and store at -20°C or below. Storage in frost free freezers is not recommended. Avoid repeated freeze/thaw cycles. Suggest spin the vial prior to opening. The antibody solution should be gently mixed before use.
Note	For laboratory research only, not for drug, diagnostic or other use.

Bioinformation

Database links	<a href="#">GeneID: 886194 Bacteria</a>
Gene Symbol	esxB
Gene Full Name	ESAT-6-like protein EsxB
Research Area	Microbiology and Infectious Disease antibody
Calculated Mw	11 kDa

Images



ARG65356 anti-Mycobacterium tuberculosis antigen CFP10 (Rv3874) antibody WB image

Western blot: Recombinant proteins stained with ARG65356 anti-Mycobacterium tuberculosis antigen CFP10 (Rv3874) antibody.

Lane 1, 3, 5: cell lysates of non-transfected E. coli (negative controls)  
Lane 2, 4, 6: cell lysate of CFP10-transfected E. coli; dilution (1, 2) 0.5 µg/ml, (3, 4) 0.2 µg/ml, (5, 6) 0.1 µg/ml.