

ARG65398 anti-CD8a antibody [53-6.7] (low endotoxin)

Package: 100 µg
Store at: -20°C

Summary

Product Description	Azide free and low endotoxin Rat Monoclonal antibody [53-6.7] recognizes CD8a
Tested Reactivity	Ms
Tested Application	CyTOF®-candidate, FACS, FuncSt, ICC/IF, IHC-Fr, IHC-P, IP
Specificity	The rat monoclonal antibody 536.7 recognizes mouse CD8a (3234 kDa; alpha chain of the CD8 antigen).
Host	Rat
Clonality	Monoclonal
Clone	53-6.7
Isotype	IgG2a
Target Name	CD8a
Species	Mouse
Immunogen	Mouse spleen cells
Conjugation	Un-conjugated
Alternate Names	T-cell surface glycoprotein CD8 alpha chain; Leu2; p32; T-lymphocyte differentiation antigen T8/Leu-2; CD8; MAL; CD antigen CD8a

Application Instructions

Application table	Application	Dilution
	CyTOF®-candidate	Assay-dependent
	FACS	1.5 µg/ml
	FuncSt	Assay-dependent
	ICC/IF	Assay-dependent
	IHC-Fr	1:1000
	IHC-P	Assay-dependent
	IP	Assay-dependent

Application Note

IHC-Fr: Formaldehyde fixation is not recommended, acetone fixation is preferred.
Functional studies: Isolation and depletion of CD8+ cells, blocking of cytotoxicity, inhibition of CD8+ T cell proliferation.
* The dilutions indicate recommended starting dilutions and the optimal dilutions or concentrations should be determined by the scientist.

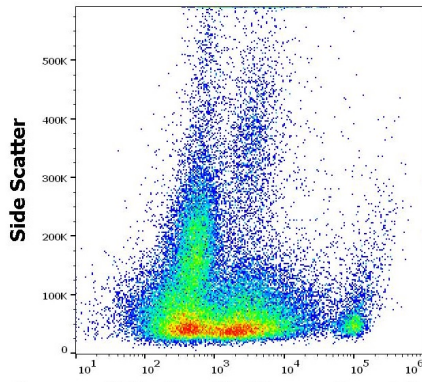
Properties

Form	Liquid
------	--------

Purification	Purification with Protein G.
Purification Note	0.2 µm filter sterilized. Endotoxin level is 95% (by SDS-PAGE)
Buffer	PBS (pH 7.4)
Concentration	1 mg/ml
Storage instruction	For continuous use, store undiluted antibody at 2-8°C for up to a week. For long-term storage, aliquot and store at -20°C or below. Storage in frost free freezers is not recommended. Avoid repeated freeze/thaw cycles. Suggest spin the vial prior to opening. The antibody solution should be gently mixed before use.
Note	For laboratory research only, not for drug, diagnostic or other use.

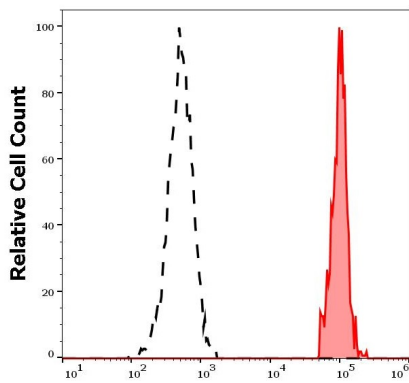
Bioinformation

Database links	GeneID: 12525 Mouse Swiss-port # P01731 Mouse
Gene Symbol	Cd8a
Gene Full Name	CD8 antigen, alpha chain
Background	<p>CD8 antigen is a cell surface glycoprotein found on most cytotoxic T lymphocytes that mediates efficient cell-cell interactions within the immune system. The CD8 antigen acts as a coreceptor with the T-cell receptor on the T lymphocyte to recognize antigens displayed by an antigen presenting cell in the context of class I MHC molecules. The coreceptor functions as either a homodimer composed of two alpha chains or as a heterodimer composed of one alpha and one beta chain. Both alpha and beta chains share significant homology to immunoglobulin variable light chains. This gene encodes the CD8 alpha chain. Multiple transcript variants encoding different isoforms have been found for this gene. [provided by RefSeq, Nov 2011]</p>
Function	<p>CD8 is an integral membrane glycoprotein that plays an essential role in the immune response and serves multiple functions in responses against both external and internal offenses. In T-cells, functions primarily as a coreceptor for MHC class I molecule:peptide complex. The antigens presented by class I peptides are derived from cytosolic proteins while class II derived from extracellular proteins. Interacts simultaneously with the T-cell receptor (TCR) and the MHC class I proteins presented by antigen presenting cells (APCs). In turn, recruits the Src kinase LCK to the vicinity of the TCR-CD3 complex. LCK then initiates different intracellular signaling pathways by phosphorylating various substrates ultimately leading to lymphokine production, motility, adhesion and activation of cytotoxic T-lymphocytes (CTLs). This mechanism enables CTLs to recognize and eliminate infected cells and tumor cells. In NK-cells, the presence of CD8A homodimers at the cell surface provides a survival mechanism allowing conjugation and lysis of multiple target cells. CD8A homodimer molecules also promote the survival and differentiation of activated lymphocytes into memory CD8 T-cells. [UniProt]</p>
Highlight	<p>Related products: CD8 antibodies; CD8 ELISA Kits; CD8 Duos / Panels; Anti-Rat IgG secondary antibodies; Related news: CyTOF-candidate Antibodies New antibody panels and duos for Tumor immune microenvironment Tumor-Infiltrating Lymphocytes (TILs) Detecting exosomal HMGB1 for ICD research</p>
Research Area	Developmental Biology antibody; Immune System antibody; Cytotoxic T antibody; Cytotoxic T Cell Surface Study antibody; Tumor-infiltrating Lymphocyte Study antibody
Calculated Mw	26 kDa
PTM	All of the five most C-terminal cysteines form inter-chain disulfide bonds in dimers and higher multimers, while the four N-terminal cysteines do not.



ARG65398 anti-CD8a antibody [53-6.7] (low endotoxin) FACS image

Flow Cytometry: Murine splenocyte suspension stained with ARG65398 anti-CD8a antibody [53-6.7] (low endotoxin) at 3 $\mu\text{g}/\text{ml}$ dilution, followed by PE-conjugated Donkey anti-Rat antibody.



ARG65398 anti-CD8a antibody [53-6.7] (low endotoxin) FACS image

Flow Cytometry: Separation of murine CD8a positive splenocytes (red-filled) from myeloid cells (black-dashed). Murine splenocyte suspension stained with ARG65398 anti-CD8a antibody [53-6.7] (low endotoxin) at 3 $\mu\text{g}/\text{ml}$ dilution, followed by PE-conjugated Donkey anti-Rat antibody.