

## ARG65415 anti-Bcl 2 antibody [Bcl2/100/D5]

Package: 100 µg, 50 µg  
Store at: -20°C

### Summary

Product Description	Mouse Monoclonal antibody [Bcl-2/100/D5] recognizes Bcl 2
Tested Reactivity	Hu
Species Does Not React With	Ms
Tested Application	FACS, ICC/IF, IHC-Fr, IHC-P, IP, WB
Specificity	The clone Bcl2/100 recognizes Bcl2, a 26 kDa protooncogen with anti-apoptotic effect, expressed in outer mitochondrial membrane, endoplasmic reticulum and nuclear envelope.
Host	Mouse
Clonality	Monoclonal
Clone	Bcl2/100/D5
Isotype	IgG1
Target Name	Bcl 2
Species	Human
Immunogen	Synthetic peptide corresponding to the amino acids 41-54 of human Bcl2
Conjugation	Un-conjugated
Alternate Names	BCL2; BCL2 Apoptosis Regulator; PPP1R50; Bcl-2; Protein Phosphatase 1, Regulatory Subunit 50; Apoptosis Regulator Bcl-2; B-Cell CLL/Lymphoma 2; BCL2, Apoptosis Regulator

### Application Instructions

Application table	Application	Dilution
	FACS	1 - 5 µg/ml
	ICC/IF	Assay-dependent
	IHC-Fr	Assay-dependent
	IHC-P	10 µg/ml
	IP	Assay-dependent
	WB	Assay-dependent

Application Note: \* The dilutions indicate recommended starting dilutions and the optimal dilutions or concentrations should be determined by the scientist.

### Properties

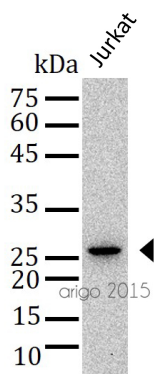
Form	Liquid
Purification	Purified from cell culture supernatant by protein-A affinity chromatography.

Purity	> 95% (by SDS-PAGE)
Buffer	PBS (pH 7.4) and 15 mM Sodium azide
Preservative	15 mM Sodium azide
Concentration	1 mg/ml
Storage instruction	For continuous use, store undiluted antibody at 2-8°C for up to a week. For long-term storage, aliquot and store at -20°C or below. Storage in frost free freezers is not recommended. Avoid repeated freeze/thaw cycles. Suggest spin the vial prior to opening. The antibody solution should be gently mixed before use.
Note	For laboratory research only, not for drug, diagnostic or other use.

## Bioinformation

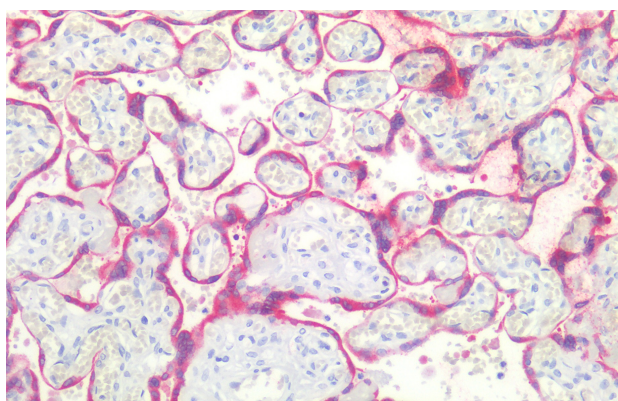
---

Database links	<a href="#">GeneID: 596 Human</a> <a href="#">Swiss-port # P10415 Human</a>
Gene Symbol	BCL2
Gene Full Name	B-cell CLL/lymphoma 2
Background	This gene encodes an integral outer mitochondrial membrane protein that blocks the apoptotic death of some cells such as lymphocytes. Constitutive expression of BCL2, such as in the case of translocation of BCL2 to Ig heavy chain locus, is thought to be the cause of follicular lymphoma. Alternative splicing results in multiple transcript variants. [provided by RefSeq, Feb 2016]
Function	Suppresses apoptosis in a variety of cell systems including factor-dependent lymphohematopoietic and neural cells. [UniProt]
Highlight	<p>Related Antibody Duos and Panels:</p> <p><a href="#">ARG30268 Apoptosis Marker Antibody Duo (Bcl2, Bax)</a>  <a href="#">ARG30269 Apoptosis Marker Antibody Duo (Bcl2, Bid)</a></p> <p>Related products:  <a href="#">Bcl-2 antibodies; Bcl-2 Duos / Panels; Anti-Rabbit IgG secondary antibodies;</a></p> <p>Related news:  <a href="#">Lymphoma</a></p>
Research Area	Cancer antibody; Cell Biology and Cellular Response antibody; Cell Death antibody; Metabolism antibody; Signaling Transduction antibody; Apoptosis Marker antibody
Calculated Mw	26 kDa
PTM	Phosphoprotein, Ubl conjugation. [UniProt]
Cellular Localization	Cytoplasm, Endoplasmic reticulum, Membrane, Mitochondrion, Mitochondrion outer membrane, Nucleus. [UniProt]



ARG65415 anti-Bcl 2 antibody [Bcl2/100/D5] WB image

Western blot: 40  $\mu$ g of Jurkat cell lysate stained with ARG65415 anti-Bcl 2 antibody [Bcl2/100/D5] at 1:500 dilution.



ARG65415 anti-Bcl 2 antibody [Bcl2/100/D5] IHC-P image

Immunohistochemistry: Paraffin-embedded Human placenta tissue stained with ARG65415 anti-Bcl 2 antibody [Bcl2/100/D5] at 10  $\mu$ g/ml dilution.