

ARG65469 anti-CD235a antibody [JC159]

Package: 100 µg
Store at: -20°C

Summary

Product Description	Mouse Monoclonal antibody [JC159] recognizes CD235a
Tested Reactivity	Hu, Rat
Tested Application	FACS, IHC-Fr, IHC-P
Specificity	The mouse monoclonal antibody JC159 recognizes an epitope between amino acids 27 and 40 of the extracellular portion of CD235a (glycophorin A), a sialoglycoprotein expressed on early erythroblasts, late erythroblasts, erythroblasts, mature erythrocytes and the cells of erythroid cell lines K562 and HEL. The antibody does not react with glycophorin B.
Host	Mouse
Clonality	Monoclonal
Clone	JC159
Isotype	IgG1
Target Name	CD235a
Immunogen	Membrane preparation from splenic hairy cell leukemia
Conjugation	Un-conjugated
Alternate Names	MN; GP _E rik; MNS; GPA; GPSAT; PAS-2; MN sialoglycoprotein; CD235a; HGpMiV; CD antigen CD235a; HGpMiXI; Sialoglycoprotein alpha; HGpSta(C); Glycophorin-A

Application Instructions

Application table	Application	Dilution
	FACS	1 - 4 µg/ml
	IHC-Fr	Assay-dependent
	IHC-P	10 µg/ml
	Application Note	* The dilutions indicate recommended starting dilutions and the optimal dilutions or concentrations should be determined by the scientist.

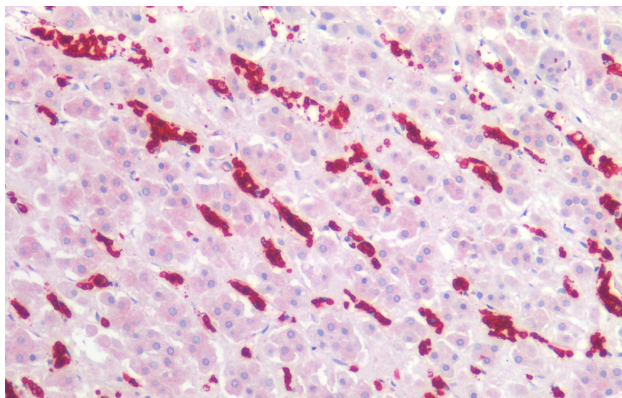
Properties

Form	Liquid
Purification	Purified from cell culture supernatant by protein-A affinity chromatography.
Purity	> 95% (by SDS-PAGE)
Buffer	PBS (pH 7.4) and 15 mM Sodium azide
Preservative	15 mM Sodium azide
Concentration	1 mg/ml

Storage instruction	For continuous use, store undiluted antibody at 2-8°C for up to a week. For long-term storage, aliquot and store at -20°C or below. Storage in frost free freezers is not recommended. Avoid repeated freeze/thaw cycles. Suggest spin the vial prior to opening. The antibody solution should be gently mixed before use.
Note	For laboratory research only, not for drug, diagnostic or other use.

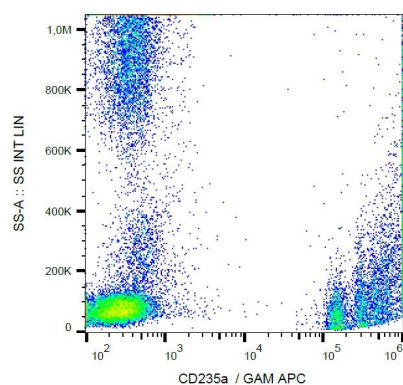
Bioinformation

Database links	GeneID: 2993 Human Swiss-port # P02724 Human
Gene Symbol	GYPA
Gene Full Name	glycophorin A (MNS blood group)
Background	CD235a (Glycophorin A, GPA) is a transmembrane sialoglycoprotein expressed on erythrocytes and their precursors. Similarly to glycophorin B (GPB), these molecules provide the cells with a large mucin-like surface, which minimalizes aggregation between erythrocytes in the circulation. GPA is the carrier of blood group M and N specificities, while GPB accounts for S, s and U specificities. CD235a is a receptor of Hsa, an Streptococcus adhesin.
Function	Glycophorin A is the major intrinsic membrane protein of the erythrocyte. The N-terminal glycosylated segment, which lies outside the erythrocyte membrane, has MN blood group receptors. Appears to be important for the function of SLC4A1 and is required for high activity of SLC4A1. May be involved in translocation of SLC4A1 to the plasma membrane. Is a receptor for influenza virus. Is a receptor for Plasmodium falciparum erythrocyte-binding antigen 175 (EBA-175); binding of EBA-175 is dependent on sialic acid residues of the O-linked glycans. Appears to be a receptor for Hepatitis A virus (HAV). [UniProt]
Research Area	Cell Biology and Cellular Response antibody
Calculated Mw	16 kDa
PTM	The major O-linked glycan are NeuAc-alpha-(2-3)-Gal-beta-(1-3)-[NeuAc-alpha-(2-6)]-GalNAcOH (about 78 %) and NeuAc-alpha-(2-3)-Gal-beta-(1-3)-GalNAcOH (17 %). Minor O-glycans (5 %) include NeuAc-alpha-(2-3)-Gal-beta-(1-3)-[NeuAc-alpha-(2-6)]-GalNAcOH NeuAc-alpha-(2-8)-NeuAc-alpha-(2-3)-Gal-beta-(1-3)-GalNAcOH. About 1% of all O-linked glycans carry blood group A, B and H determinants. They derive from a type-2 precursor core structure, Gal-beta-(1,3)-GlcNAc-beta-1-R, and the antigens are synthesized by addition of fucose (H antigen-specific) and then N-acetylgalactosamine (A antigen-specific) or galactose (B antigen-specific). Specifically O-linked-glycans are NeuAc-alpha-(2-3)-Gal-beta-(1-3)-GalNAcOH-(6-1)-GlcNAc-beta-(4-1)-[Fuc-alpha-(1-2)]-Gal-beta-(3-1)-GalNAc-alpha (about 1%, B antigen-specific) and NeuAc-alpha-(2-3)-Gal-beta-(1-3)-GalNAcOH-(6-1)-GlcNAc-beta-(4-1)-[Fuc-alpha-(1-2)]-Gal-beta (1 %, O antigen-, A antigen- and B antigen-specific).



ARG65469 anti-CD235a antibody [JC159] IHC-P image

Immunohistochemistry: Paraffin-embedded Human adrenal tissue stained with ARG65469 anti-CD235a antibody [JC159] at 5 µg/ml dilution.



ARG65469 anti-CD235a antibody [JC159] FACS image

Flow Cytometry: Human peripheral blood (erythrocytes and leukocytes) stained with ARG65469 anti-CD235a antibody [JC159], followed by incubation with APC labelled Goat anti-Mouse secondary antibody.