

ARG65495 anti-CD46 antibody [MEM-258] (azide free)

Package: 100 µg
Store at: -20°C

Summary

Product Description	Azide free Mouse Monoclonal antibody [MEM-258] recognizes CD46
Tested Reactivity	Hu, Bov
Tested Application	FACS, IP, WB
Specificity	The clone MEM-258 recognizes an epitope on SCR4 (the membrane-proximal SCR) domain of CD46 (Membrane cofactor protein). CD46 is 56-66 kDa dimeric transmembrane protein expressed on T and B lymphocytes, platelets, monocytes, granulocytes, endothelial cells, epithelial cells and fibroblast; it is negative on erythrocytes.
Host	Mouse
Clonality	Monoclonal
Clone	MEM-258
Isotype	IgG1
Target Name	CD46
Species	Human
Immunogen	HPB-ALL human T cell line
Conjugation	Un-conjugated
Alternate Names	MIC10; TLX; CD antigen CD46; Trophoblast leukocyte common antigen; AHUS2; TRA2.10; Membrane cofactor protein; MCP

Application Instructions

Application table	Application	Dilution
	FACS	1 µg/ml
	IP	Assay-dependent
	WB	Assay-dependent
Application Note	WB: Under non-reducing condition. * The dilutions indicate recommended starting dilutions and the optimal dilutions or concentrations should be determined by the scientist.	

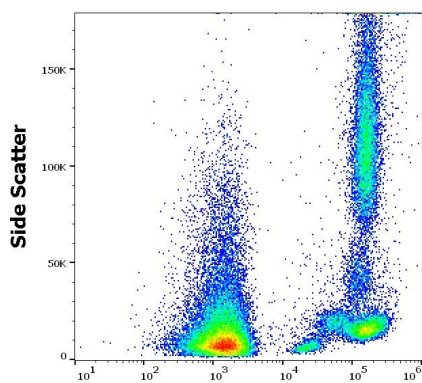
Properties

Form	Liquid
Purification	Purification with Protein A.
Purification Note	0.2 µm filter sterilized.
Purity	> 95% (by SDS-PAGE)
Buffer	PBS (pH 7.4)

Concentration	1 mg/ml
Storage instruction	For continuous use, store undiluted antibody at 2-8°C for up to a week. For long-term storage, aliquot and store at -20°C or below. Storage in frost free freezers is not recommended. Avoid repeated freeze/thaw cycles. Suggest spin the vial prior to opening. The antibody solution should be gently mixed before use.
Note	For laboratory research only, not for drug, diagnostic or other use.

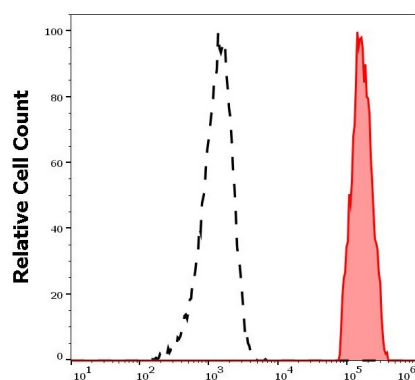
Bioinformation

Database links	GeneID: 280851 Bovine GeneID: 4179 Human Swiss-port # P15529 Human Swiss-port # Q6VE48 Bovine
Gene Symbol	CD46
Gene Full Name	CD46 molecule, complement regulatory protein
Background	CD46 (MCP, membrane cofactor protein) is a multifunctional cell surface transmembrane protein that binds and inactivates C3b and C4b complement fragments, regulates T cell-induced inflammatory responses by either inhibiting (CD46-1 isoform) or increasing (CD46-2 isoform) the contact hypersensitivity reaction. CD46 also serves as a receptor for several human pathogens (both bacteria and viruses), and its ligation alters T lymphocyte polarization toward antigen-presenting cells or target cells, inhibiting lymphocyte function. CD46 is a protector of placental tissue and is also expressed on the inner acrosomal membrane of spermatozoa.
Function	Acts as a cofactor for complement factor I, a serine protease which protects autologous cells against complement-mediated injury by cleaving C3b and C4b deposited on host tissue. May be involved in the fusion of the spermatozoa with the oocyte during fertilization. Also acts as a costimulatory factor for T-cells which induces the differentiation of CD4+ into T-regulatory 1 cells. T-regulatory 1 cells suppress immune responses by secreting interleukin-10, and therefore are thought to prevent autoimmunity. A number of viral and bacterial pathogens seem to exploit this property and directly induce an immunosuppressive phenotype in T-cells by binding to CD46. [UniProt]
Research Area	Immune System antibody
Calculated Mw	44 kDa
PTM	<p>N-glycosylated on Asn-83; Asn-114 and Asn-273 in most tissues, but probably less N-glycosylated in testis. N-glycosylation on Asn-114 and Asn-273 is required for cytoprotective function. N-glycosylation on Asn-114 is required for Measles virus binding. N-glycosylation on Asn-273 is required for Neisseria binding. N-glycosylation is not required for human adenovirus binding.</p> <p>Extensively O-glycosylated in the Ser/Thr-rich domain. O-glycosylation is required for Neisseria binding but not for Measles virus or human adenovirus binding.</p> <p>In epithelial cells, isoforms B/D/F/H/J/L/3 are phosphorylated by YES1 in response to infection by Neisseria gonorrhoeae; which promotes infectivity. In T-cells, these isoforms may be phosphorylated by LCK.</p>



ARG65495 anti-CD46 antibody [MEM-258] (azide free) FACS image

Flow Cytometry: Human peripheral blood cells stained with ARG65495 anti-CD46 antibody [MEM-258] (azide free) at 0.5 $\mu\text{g}/\text{ml}$ dilution, followed by APC-conjugated Goat anti-Mouse antibody.



ARG65495 anti-CD46 antibody [MEM-258] (azide free) FACS image

Flow Cytometry: Separation of human lymphocytes (red-filled) from erythrocytes (black-dashed). Human peripheral whole blood stained with ARG65495 anti-CD46 antibody [MEM-258] (azide free) at 0.5 $\mu\text{g}/\text{ml}$ dilution, followed by APC-conjugated Goat anti-Mouse antibody.