

ARG65571 anti-NDUFAF2 antibody

Package: 100 µl
Store at: -20°C

Summary

Product Description	Rabbit Polyclonal antibody recognizes NDUFAF2
Tested Reactivity	Hu
Tested Application	WB
Host	Rabbit
Clonality	Polyclonal
Isotype	IgG
Target Name	NDUFAF2
Species	Human
Immunogen	Fusion protein of human NDUFAF2
Conjugation	Un-conjugated
Alternate Names	B17.2L; NADH dehydrogenase [ubiquinone] 1 alpha subcomplex assembly factor 2; mimitin; Myc-induced mitochondrial protein; MMTN; NDUFA12-like protein; NDUFA12L; Mimitin, mitochondrial; B17.2-like

Application Instructions

Application table	Application	Dilution
	WB	500-2000
Application Note	* The dilutions indicate recommended starting dilutions and the optimal dilutions or concentrations should be determined by the scientist.	
Positive Control	Raji cell and human liver cancer tissue, HeLa cell	

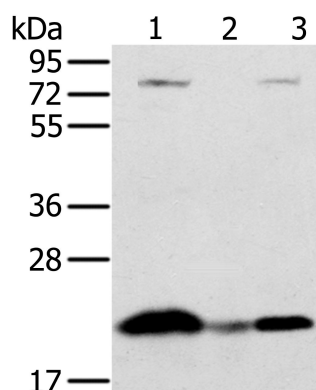
Properties

Form	Liquid
Purification	Purified by antigen-affinity chromatography.
Buffer	1XPBS (pH 7.4), 0.05% Sodium azide and 40% Glycerol
Preservative	0.05% Sodium azide
Stabilizer	40% Glycerol
Concentration	2.6 mg/ml
Storage instruction	For continuous use, store undiluted antibody at 2-8°C for up to a week. For long-term storage, aliquot and store at -20°C. Storage in frost free freezers is not recommended. Avoid repeated freeze/thaw cycles. Suggest spin the vial prior to opening. The antibody solution should be gently mixed before use.
Note	For laboratory research only, not for drug, diagnostic or other use.

Bioinformation

Database links	GeneID: 91942 Human Swiss-port # Q8N183 Human
Gene Symbol	NDUFAF2
Gene Full Name	NADH dehydrogenase (ubiquinone) complex I, assembly factor 2
Background	NADH:ubiquinone oxidoreductase (complex I) catalyzes the transfer of electrons from NADH to ubiquinone (coenzyme Q) in the first step of the mitochondrial respiratory chain, resulting in the translocation of protons across the inner mitochondrial membrane. This gene encodes a complex I assembly factor. Mutations in this gene cause progressive encephalopathy resulting from mitochondrial complex I deficiency.
Function	Acts as a molecular chaperone for mitochondrial complex I assembly. [UniProt]
Highlight	Related products: Anti-Rabbit IgG secondary antibodies: Related poster download: The Structure & Functions of Mitochondria.pdf
Research Area	Cancer antibody; Controls and Markers antibody; Metabolism antibody; Signaling Transduction antibody
Calculated Mw	20 kDa

Images



ARG65571 anti-NDUFAF2 antibody WB image

Western blot: 40 µg of 1) Raji, 2) Human liver cancer, and 3) HeLa cell lysates stained with ARG65571 anti-NDUFAF2 antibody at 1:250 dilution. Exposure time: 10 seconds.