

## ARG65584 anti-MRPL12 antibody

Package: 100 µl  
Store at: -20°C

### Summary

Product Description	Rabbit Polyclonal antibody recognizes MRPL12
Tested Reactivity	Hu
Tested Application	IHC-P, WB
Host	Rabbit
Clonality	Polyclonal
Isotype	IgG
Target Name	MRPL12
Species	Human
Immunogen	Fusion protein of human MRPL12
Conjugation	Un-conjugated
Alternate Names	MRP-L31/34; MRPL7/L12; MRP-L12; 39S ribosomal protein L12, mitochondrial; L12mt; MRPL7; RPML12; 5c5-2

### Application Instructions

Application table	Application	Dilution
	IHC-P	50-200
	WB	500-2000
Application Note	* The dilutions indicate recommended starting dilutions and the optimal dilutions or concentrations should be determined by the scientist.	
Positive Control	293T cell	

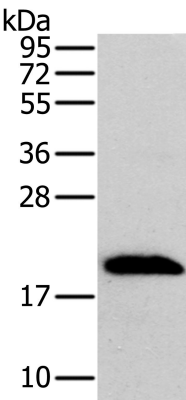
### Properties

Form	Liquid
Purification	Purified by antigen-affinity chromatography.
Buffer	1XPBS (pH 7.4), 0.05% Sodium azide and 40% Glycerol
Preservative	0.05% Sodium azide
Stabilizer	40% Glycerol
Concentration	1.3 mg/ml
Storage instruction	For continuous use, store undiluted antibody at 2-8°C for up to a week. For long-term storage, aliquot and store at -20°C. Storage in frost free freezers is not recommended. Avoid repeated freeze/thaw cycles. Suggest spin the vial prior to opening. The antibody solution should be gently mixed before use.
Note	For laboratory research only, not for drug, diagnostic or other use.

Bioinformation

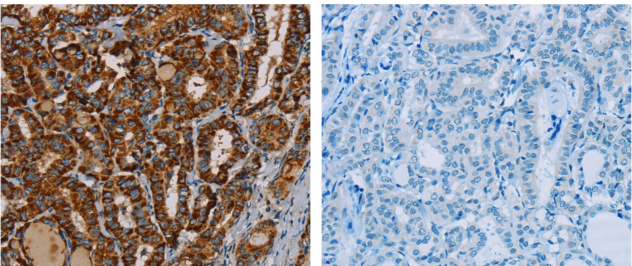
Database links	<a href="#">GeneID: 6182 Human</a> <a href="#">Swiss-port # P52815 Human</a>
Gene Symbol	MRPL12
Gene Full Name	mitochondrial ribosomal protein L12
Background	Mammalian mitochondrial ribosomal proteins are encoded by nuclear genes and help in protein synthesis within the mitochondrion. Mitochondrial ribosomes (mitoribosomes) consist of a small 28S subunit and a large 39S subunit. They have an estimated 75% protein to rRNA composition compared to prokaryotic ribosomes, where this ratio is reversed. Another difference between mammalian mitoribosomes and prokaryotic ribosomes is that the latter contain a 5S rRNA. Among different species, the proteins comprising the mitoribosome differ greatly in sequence, and sometimes in biochemical properties, which prevents easy recognition by sequence homology.
Research Area	Controls and Markers antibody; Gene Regulation antibody; Metabolism antibody
Calculated Mw	21 kDa

Images



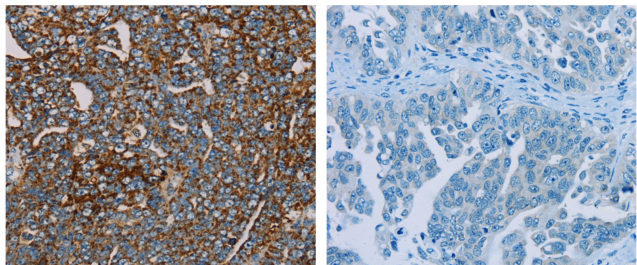
ARG65584 anti-MRPL12 antibody WB image

Western blot: 40 µg of 293T cell lysate stained with ARG65584 anti-MRPL12 antibody at 1:300 dilution. Exposure time: 5 seconds.



ARG65584 anti-MRPL12 antibody IHC-P image

Immunohistochemistry: Paraffin-embedded Human thyroid cancer tissue stained with ARG65584 anti-MRPL12 antibody (left) at 1:25 dilution, or the same antibody preincubated with fusion protein (right). (Original magnification: ×200)



ARG65584 anti-MRPL12 antibody IHC-P image

Immunohistochemistry: Paraffin-embedded Human thyroid cancer tissue stained with ARG65584 anti-MRPL12 antibody (left) at 1:25 dilution, or the same antibody preincubated with fusion protein (right). (Original magnification:  $\times 200$ )