

ARG65586 anti-MRPL39 antibody

Package: 100 µl
Store at: -20°C

Summary

Product Description	Rabbit Polyclonal antibody recognizes MRPL39
Tested Reactivity	Hu
Tested Application	IHC-P, WB
Host	Rabbit
Clonality	Polyclonal
Isotype	IgG
Target Name	MRPL39
Species	Human
Immunogen	Fusion protein of human MRPL39
Conjugation	Un-conjugated
Alternate Names	RPML5; PRED66; L5mt; PRED22; MSTP003; C21orf92; MRPL5; 39S ribosomal protein L5, mitochondrial; MRP-L5; 39S ribosomal protein L39, mitochondrial; L39mt; MRP-L39

Application Instructions

Application table	Application	Dilution
	IHC-P	50-200
	WB	1000-5000
Application Note	* The dilutions indicate recommended starting dilutions and the optimal dilutions or concentrations should be determined by the scientist.	
Positive Control	293T, K562, 231 and HeLa cell	

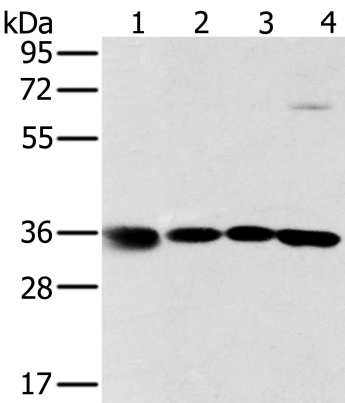
Properties

Form	Liquid
Purification	Purified by antigen-affinity chromatography.
Buffer	1XPBS (pH 7.4), 0.05% Sodium azide and 40% Glycerol
Preservative	0.05% Sodium azide
Stabilizer	40% Glycerol
Concentration	2.5 mg/ml
Storage instruction	For continuous use, store undiluted antibody at 2-8°C for up to a week. For long-term storage, aliquot and store at -20°C. Storage in frost free freezers is not recommended. Avoid repeated freeze/thaw cycles. Suggest spin the vial prior to opening. The antibody solution should be gently mixed before use.
Note	For laboratory research only, not for drug, diagnostic or other use.

Bioinformation

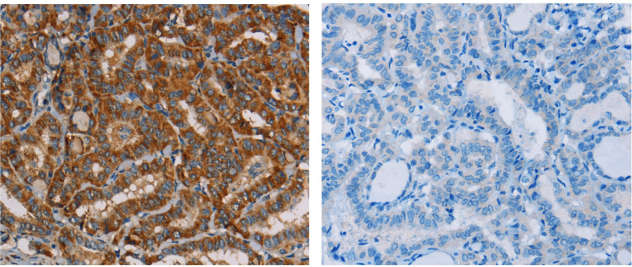
Database links	GeneID: 54148 Human Swiss-port # Q9NYK5 Human
Gene Symbol	MRPL39
Gene Full Name	mitochondrial ribosomal protein L39
Background	Mammalian mitochondrial ribosomal proteins are encoded by nuclear genes and help in protein synthesis within the mitochondrion. Mitochondrial ribosomes (mitoribosomes) consist of a small 28S subunit and a large 39S subunit. They have an estimated 75% protein to rRNA composition compared to prokaryotic ribosomes, where this ratio is reversed. Another difference between mammalian mitoribosomes and prokaryotic ribosomes is that the latter contain a 5S rRNA.
Research Area	Gene Regulation antibody
Calculated Mw	39 kDa

Images



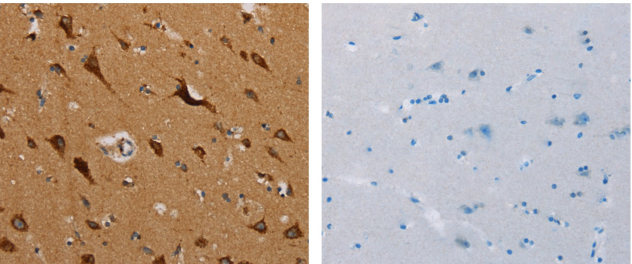
ARG65586 anti-MRPL39 antibody WB image

Western blot: 40 µg of 1) 293T, 2) K562, 3) 231, and 4) HeLa cell lysates stained with ARG65586 anti-MRPL39 antibody at 1:600 dilution. Exposure time: 2 seconds.



ARG65586 anti-MRPL39 antibody IHC-P image

Immunohistochemistry: Paraffin-embedded Human thyroid cancer tissue stained with ARG65586 anti-MRPL39 antibody (left) at 1:45 dilution, or the same antibody preincubated with fusion protein (right). (Original magnification: ×200).



ARG65586 anti-MRPL39 antibody IHC-P image

Immunohistochemistry: Paraffin-embedded Human thyroid cancer tissue stained with ARG65586 anti-MRPL39 antibody (left) at 1:45 dilution, or the same antibody preincubated with fusion protein (right). (Original magnification: ×200).