

ARG65588 anti-PMPCB antibody

Package: 100 µl
Store at: -20°C

Summary

Product Description	Rabbit Polyclonal antibody recognizes PMPCB
Tested Reactivity	Hu
Tested Application	IHC-P, WB
Host	Rabbit
Clonality	Polyclonal
Isotype	IgG
Target Name	PMPCB
Species	Human
Immunogen	Fusion protein of human PMPCB
Conjugation	Un-conjugated
Alternate Names	EC 3.4.24.64; Beta-MPP; P-52; Mitochondrial-processing peptidase subunit beta; MPPB; MPPP52; MPP11

Application Instructions

Application table	Application	Dilution
	IHC-P	25-100
	WB	200-1000
Application Note	* The dilutions indicate recommended starting dilutions and the optimal dilutions or concentrations should be determined by the scientist.	
Positive Control	HepG2 cell	

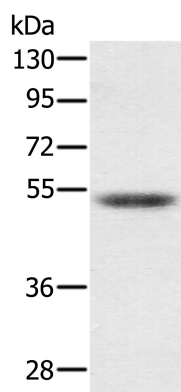
Properties

Form	Liquid
Purification	Purified by antigen-affinity chromatography.
Buffer	1XPBS (pH 7.4), 0.05% Sodium azide and 40% Glycerol
Preservative	0.05% Sodium azide
Stabilizer	40% Glycerol
Concentration	1.3 mg/ml
Storage instruction	For continuous use, store undiluted antibody at 2-8°C for up to a week. For long-term storage, aliquot and store at -20°C. Storage in frost free freezers is not recommended. Avoid repeated freeze/thaw cycles. Suggest spin the vial prior to opening. The antibody solution should be gently mixed before use.
Note	For laboratory research only, not for drug, diagnostic or other use.

Bioinformation

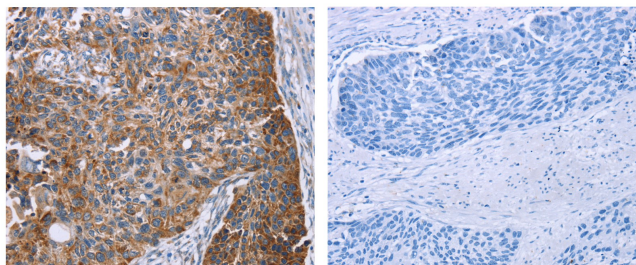
Database links	GeneID: 9512 Human Swiss-port # O75439 Human
Gene Symbol	PMPCB
Gene Full Name	peptidase (mitochondrial processing) beta
Background	This gene is a member of the peptidase M16 family and encodes a protein with a zinc-binding motif. This protein is located in the mitochondrial matrix and catalyzes the cleavage of the leader peptides of precursor proteins newly imported into the mitochondria, though it only functions as part of a heterodimeric complex.
Function	Cleaves presequences (transit peptides) from mitochondrial protein precursors. [UniProt]
Highlight	Related products: Anti-Rabbit IgG secondary antibodies: Related poster download: The Structure & Functions of Mitochondria.pdf
Research Area	Cancer antibody; Cell Biology and Cellular Response antibody; Controls and Markers antibody; Metabolism antibody
Calculated Mw	54 kDa

Images



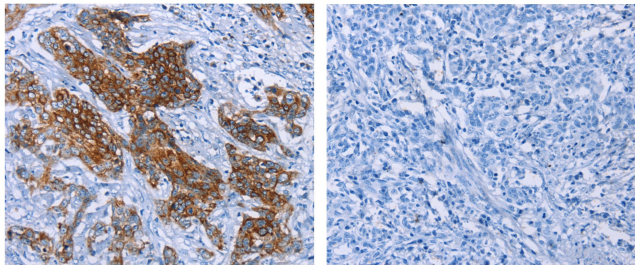
ARG65588 anti-PMPCB antibody WB image

Western blot: 40 µg of HepG2 cell lysate stained with ARG65588 anti-PMPCB antibody at 1:300 dilution. Exposure time: 5 seconds.



ARG65588 anti-PMPCB antibody IHC-P image

Immunohistochemistry: Paraffin-embedded Human esophagus cancer tissue stained with ARG65588 anti-PMPCB antibody (left) at 1:25 dilution, or the same antibody preincubated with fusion protein (right). (Original magnification: ×200).



ARG65588 anti-PMPCB antibody IHC-P image

Immunohistochemistry: Paraffin-embedded Human esophagus cancer tissue stained with ARG65588 anti-PMPCB antibody (left) at 1:25 dilution, or the same antibody preincubated with fusion protein (right). (Original magnification: $\times 200$).