

ARG65641 anti-SDF4 antibody

Package: 100 µg
Store at: -20°C

Summary

Product Description	Goat Polyclonal antibody recognizes SDF4
Tested Reactivity	Hu
Predict Reactivity	Ms, Rat, Cow, Dog
Tested Application	IHC-P, WB
Host	Goat
Clonality	Polyclonal
Target Name	SDF4
Species	Human
Immunogen	Synthetic peptide around the center region of Human SDF-4 (C-EYKVKFLASKGHSEK)
Conjugation	Un-conjugated
Alternate Names	45 kDa calcium-binding protein; SDF-4; Stromal cell-derived factor 4; Cab45

Application Instructions

Application table	Application	Dilution
	IHC-P	5 - 10 µg/ml
	WB	0.1 - 0.3 µg/ml
Application Note	IHC-P: Antigen Retrieval: Steam tissue section in Citrate buffer (pH 6.0). WB: Recommend incubate at RT for 1h. * The dilutions indicate recommended starting dilutions and the optimal dilutions or concentrations should be determined by the scientist.	

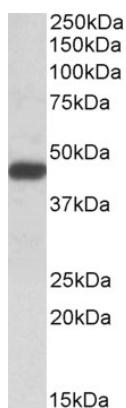
Properties

Form	Liquid
Purification	Affinity purified
Buffer	Tris saline (pH 7.3), 0.02% Sodium azide and 0.5% BSA.
Preservative	0.02% Sodium azide
Stabilizer	0.5% BSA
Concentration	0.5 mg/ml
Storage instruction	For continuous use, store undiluted antibody at 2-8°C for up to a week. For long-term storage, aliquot and store at -20°C or below. Storage in frost free freezers is not recommended. Avoid repeated freeze/thaw cycles. Suggest spin the vial prior to opening. The antibody solution should be gently mixed before use.
Note	For laboratory research only, not for drug, diagnostic or other use.

Bioinformation

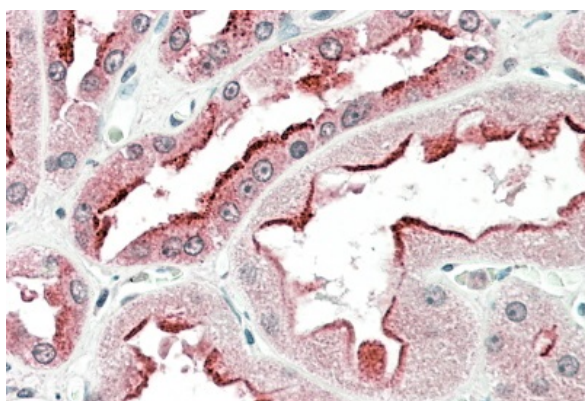
Database links	GeneID: 51150 Human Swiss-port # Q9BRK5 Human
Gene Symbol	SDF4
Gene Full Name	stromal cell derived factor 4
Background	This gene encodes a stromal cell derived factor that is a member of the CREC protein family. The encoded protein contains six EF-hand motifs and calcium-binding motifs. This protein localizes to the Golgi lumen and may be involved in regulating calcium dependent cellular activities. [provided by RefSeq, Sep 2011]
Function	May regulate calcium-dependent activities in the endoplasmic reticulum lumen or post-ER compartment. Isoform 5 may be involved in the exocytosis of zymogens by pancreatic acini.
Research Area	Cancer antibody; Signaling Transduction antibody
Calculated Mw	42 kDa

Images



ARG65641 anti-SDF4 antibody WB image

Western blot: 35 µg of Jurkat lysate stained with ARG65641 anti-SDF4 antibody at 0.1 µg/ml dilution (1h incubation).



ARG65641 anti-SDF4 antibody IHC image

Immunohistochemistry: Paraffin embedded Human Kidney stained with ARG65641 anti-SDF4 antibody at 5 µg/ml dilution. Steamed antigen retrieval with citrate buffer pH 6, AP-staining.