

## ARG65709 anti-FDFT1 antibody

Package: 100 µl  
Store at: -20°C

### Summary

Product Description	Rabbit Polyclonal antibody recognizes FDFT1
Tested Reactivity	Hu, Ms, Rat
Tested Application	ICC/IF, IHC-P, WB
Host	Rabbit
Clonality	Polyclonal
Isotype	IgG
Target Name	FDFT1
Species	Human
Immunogen	Recombinant protein of Human FDFT1
Conjugation	Un-conjugated
Alternate Names	EC 2.5.1.21; Squalene synthase; DGPT; SS; ERG9; SQS; Farnesyl-diphosphate farnesyltransferase; FPP:FPP farnesyltransferase

### Application Instructions

Application table	Application	Dilution
	ICC/IF	1:50 - 1:200
	IHC-P	1:50 - 1:200
	WB	1:500 - 1:2000
Application Note	* The dilutions indicate recommended starting dilutions and the optimal dilutions or concentrations should be determined by the scientist.	
Positive Control	Rat liver	

### Properties

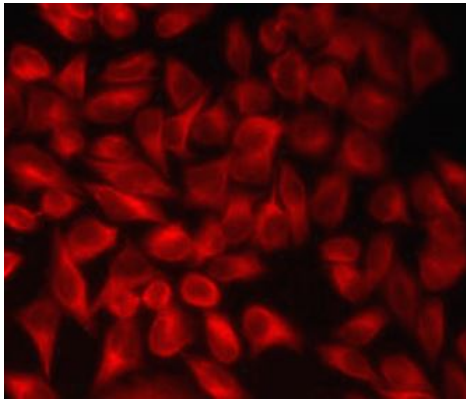
Form	Liquid
Purification	Affinity purification with immunogen.
Buffer	PBS (pH 7.3), 0.02% Sodium azide and 50% Glycerol
Preservative	0.02% Sodium azide
Stabilizer	50% Glycerol
Storage instruction	For continuous use, store undiluted antibody at 2-8°C for up to a week. For long-term storage, aliquot and store at -20°C. Storage in frost free freezers is not recommended. Avoid repeated freeze/thaw cycles. Suggest spin the vial prior to opening. The antibody solution should be gently mixed before use.
Note	For laboratory research only, not for drug, diagnostic or other use.

## Bioinformation

Gene Symbol	FDFT1
Gene Full Name	farnesyl-diphosphate farnesyltransferase 1
Background	This gene encodes a membrane-associated enzyme located at a branch point in the mevalonate pathway. The encoded protein is the first specific enzyme in cholesterol biosynthesis, catalyzing the dimerization of two molecules of farnesyl diphosphate in a two-step reaction to form squalene. [provided by RefSeq, Jul 2008]
Research Area	Cancer antibody; Cell Biology and Cellular Response antibody; Metabolism antibody; Neuroscience antibody
Calculated Mw	48 kDa

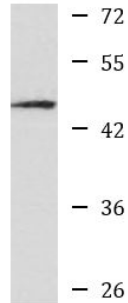
## Images

---



ARG65709 anti-FDFT1 antibody ICC/IF image

Immunofluorescence: MCF7 cells stained with ARG65709 anti-FDFT1 antibody.



Rat liver

ARG65709 anti-FDFT1 antibody WB image

Western blot: Rat liver lysate stained with ARG65709 anti-FDFT1 antibody.