

ARG65743 anti-ROR1 antibody

Package: 100 µg, 50 µg
Store at: -20°C

Summary

Product Description	Goat Polyclonal antibody recognizes ROR1
Tested Reactivity	Hu
Predict Reactivity	Ms, Rat
Tested Application	IHC-P
Specificity	This antibody is expected to recognize isoform 1 (NP_005003.2) only.
Host	Goat
Clonality	Polyclonal
Isotype	IgG
Target Name	ROR1
Species	Human
Immunogen	Synthetic peptide around the C-terminus of Human ROR1. (C-GNKSQKPYKIDSKQA)
Conjugation	Un-conjugated
Alternate Names	Tyrosine-protein kinase transmembrane receptor ROR1; Neurotrophic tyrosine kinase, receptor-related 1; EC 2.7.10.1; NTRKR1; dJ537F10.1

Application Instructions

Application table	Application	Dilution
	IHC-P	3 - 6 µg/ml
Application Note	IHC-P: Antigen Retrieval: Steam tissue section in Citrate buffer (pH 6.0). * The dilutions indicate recommended starting dilutions and the optimal dilutions or concentrations should be determined by the scientist.	

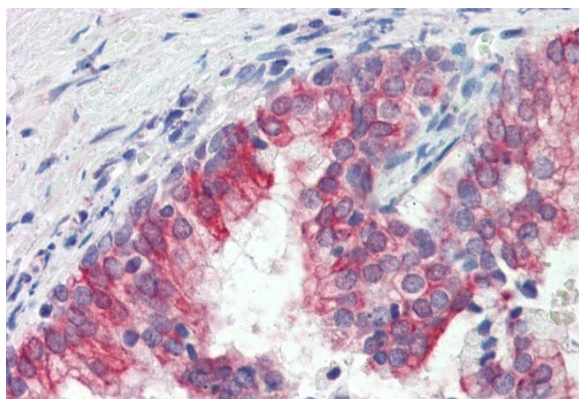
Properties

Form	Liquid
Purification	Affinity purified
Buffer	Tris saline (pH 7.3), 0.02% Sodium azide and 0.5% BSA.
Preservative	0.02% Sodium azide
Stabilizer	0.5% BSA
Concentration	0.5 mg/ml
Storage instruction	For continuous use, store undiluted antibody at 2-8°C for up to a week. For long-term storage, aliquot and store at -20°C or below. Storage in frost free freezers is not recommended. Avoid repeated freeze/thaw cycles. Suggest spin the vial prior to opening. The antibody solution should be gently mixed before use.

Bioinformation

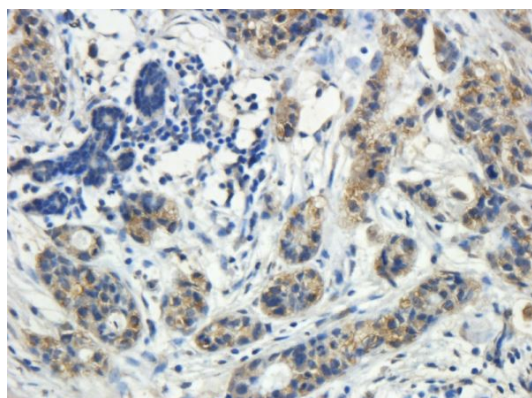
Database links	GeneID: 4919 Human Swiss-port # Q01973 Human
Gene Symbol	ROR1
Gene Full Name	receptor tyrosine kinase-like orphan receptor 1
Background	This gene encodes a receptor tyrosine kinase-like orphan receptor that modulates neurite growth in the central nervous system. The encoded protein is a glycosylated type I membrane protein that belongs to the ROR subfamily of cell surface receptors. It is a pseudokinase that lacks catalytic activity and may interact with the non-canonical Wnt signalling pathway. This gene is highly expressed during early embryonic development but expressed at very low levels in adult tissues. Increased expression of this gene is associated with B-cell chronic lymphocytic leukaemia. Alternative splicing results in multiple transcript variants encoding different isoforms. [provided by RefSeq, Jun 2012]
Function	Tyrosine-protein kinase receptor whose role is not yet clear. [UniProt]
Calculated Mw	104 kDa

Images



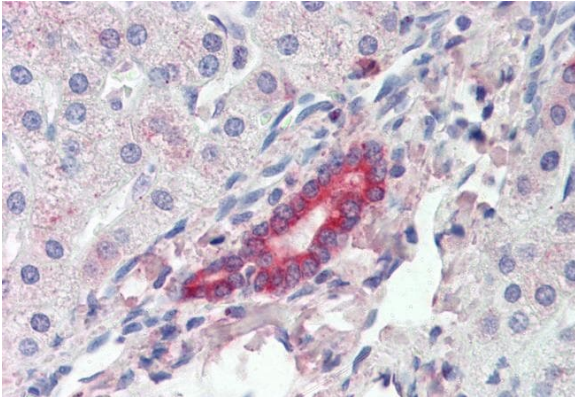
ARG65743 anti-ROR1 antibody IHC-P image

Immunohistochemistry: Paraffin-embedded Human prostate tissue. Antigen Retrieval: Steam tissue section in Citrate buffer (pH 6.0). The tissue section was stained with ARG65743 anti-ROR1 antibody at 3 µg/ml dilution followed by AP-staining.



ARG65743 anti-ROR1 antibody IHC-P image

Immunohistochemistry: paraffin-embedded Human breast cancer tissue stained with ARG65743 anti-ROR1 antibody at 5 µg/ml dilution. Heated antigen retrieval with citrate buffer pH 6, DAB-staining.



ARG65743 anti-ROR1 antibody IHC-P image

Immunohistochemistry: Paraffin-embedded Human liver tissue.
Antigen Retrieval: Steam tissue section in Citrate buffer (pH 6.0). The tissue section was stained with ARG65743 anti-ROR1 antibody at 3 $\mu\text{g/ml}$ dilution followed by AP-staining.