

## ARG65768 anti-ARHGEF5 antibody

Package: 100 µl  
Store at: -20°C

### Summary

Product Description	Rabbit Polyclonal antibody recognizes ARHGEF5
Tested Reactivity	Hu
Tested Application	IHC-P, WB
Host	Rabbit
Clonality	Polyclonal
Isotype	IgG
Target Name	ARHGEF5
Species	Human
Immunogen	Fusion protein of Human ARHGEF5 (NP_005426.2)
Conjugation	Un-conjugated
Alternate Names	P60; TIM1; Oncogene TIM; Rho guanine nucleotide exchange factor 5; TIM; GEF5; Ephexin-3; p60 TIM; Transforming immortalized mammary oncogene; Guanine nucleotide regulatory protein TIM

### Application Instructions

Application table	Application	Dilution
	IHC-P	1:50 - 1:200
	WB	1:1000 - 1:5000
Application Note	* The dilutions indicate recommended starting dilutions and the optimal dilutions or concentrations should be determined by the scientist.	

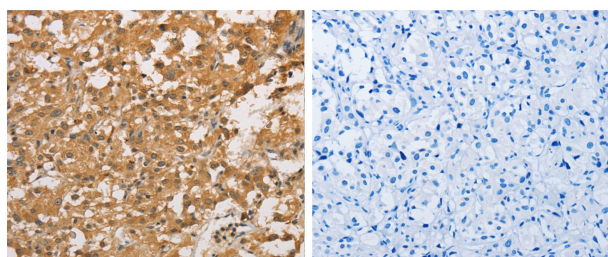
### Properties

Form	Liquid
Purification	Affinity purification with immunogen.
Buffer	PBS (pH 7.4), 0.05% Sodium azide and 40% Glycerol
Preservative	0.05% Sodium azide
Stabilizer	40% Glycerol
Storage instruction	For continuous use, store undiluted antibody at 2-8°C for up to a week. For long-term storage, aliquot and store at -20°C. Storage in frost free freezers is not recommended. Avoid repeated freeze/thaw cycles. Suggest spin the vial prior to opening. The antibody solution should be gently mixed before use.
Note	For laboratory research only, not for drug, diagnostic or other use.

### Bioinformation

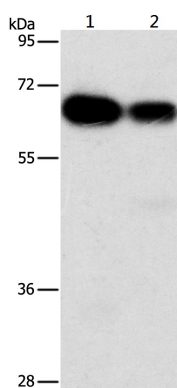
Database links	<a href="#">GeneID: 7984 Human</a> <a href="#">Swiss-port # Q12774 Human</a>
Gene Symbol	ARHGEF5
Gene Full Name	Rho guanine nucleotide exchange factor (GEF) 5
Background	Rho GTPases play a fundamental role in numerous cellular processes initiated by extracellular stimuli that work through G protein coupled receptors. The encoded protein may form a complex with G proteins and stimulate Rho-dependent signals. This protein may be involved in the control of cytoskeletal organization. [provided by RefSeq, Jul 2008]
Calculated Mw	177 kDa
PTM	Activation of SRC induces tyrosine phosphorylation of ARHGEF5.

## Images



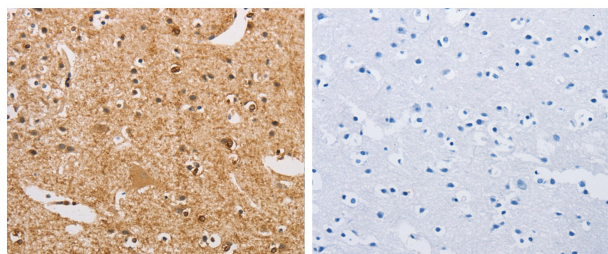
ARG65768 anti-ARHGEF5 antibody IHC-P image

Immunohistochemistry: paraffin-embedded Human thyroid cancer tissue stained with ARG65768 anti-ARHGEF5 antibody (left) at 1:50 dilution, or the same antibody pre-incubated with antigen (right). (Original magnification: X200)



ARG65768 anti-ARHGEF5 antibody WB image

Western blot: 40 µg of 1) HeLa, 2) K562 cell lysates stained with ARG65768 anti-ARHGEF5 antibody at 1:1150 dilution.



ARG65768 anti-ARHGEF5 antibody IHC-P image

Immunohistochemistry: paraffin-embedded Human brain tissue stained with ARG65768 anti-ARHGEF5 antibody (left) at 1:50 dilution, or the same antibody pre-incubated with antigen (right). (Original magnification: X200)