

ARG65805 anti-NRBP1 antibody

Package: 100 µl
Store at: -20°C

Summary

Product Description	Rabbit Polyclonal antibody recognizes NRBP1
Tested Reactivity	Hu
Predict Reactivity	Ms, Mk
Tested Application	WB
Specificity	Recognizes endogenous levels of NRBP1 protein.
Host	Rabbit
Clonality	Polyclonal
Isotype	IgG
Target Name	NRBP1
Species	Human
Immunogen	KLH-conjugated synthetic peptide around the center region of Human NRBP1.
Conjugation	Un-conjugated
Alternate Names	NRBP; MADM; BCON3; MUDPNP; Nuclear receptor-binding protein

Application Instructions

Application table	Application	Dilution
	WB	1:500 - 1:1000
Application Note	* The dilutions indicate recommended starting dilutions and the optimal dilutions or concentrations should be determined by the scientist.	

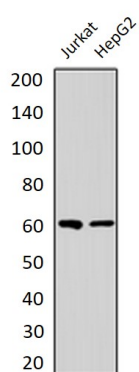
Properties

Form	Liquid
Purification	Affinity purification with immunogen.
Buffer	PBS (pH 7.3), 0.02% Sodium azide and 0.2% BSA.
Preservative	0.02% Sodium azide
Stabilizer	0.2% BSA
Storage instruction	For continuous use, store undiluted antibody at 2-8°C for up to a week. For long-term storage, aliquot and store at -20°C or below. Storage in frost free freezers is not recommended. Avoid repeated freeze/thaw cycles. Suggest spin the vial prior to opening. The antibody solution should be gently mixed before use.
Note	For laboratory research only, not for drug, diagnostic or other use.

Bioinformation

Database links	GeneID: 29959 Human Swiss-port # Q9UHY1 Human
Gene Symbol	NRBP1
Gene Full Name	nuclear receptor binding protein 1
Function	May play a role in subcellular trafficking between the endoplasmic reticulum and Golgi apparatus through interactions with the Rho-type GTPases. Binding to the NS3 protein of dengue virus type 2 appears to subvert this activity into the alteration of the intracellular membrane structure associated with flaviviral replication. [UniProt]
Calculated Mw	60 kDa

Images



ARG65805 anti-NRBP1 antibody WB image

Western blot: Jurkat and HepG2 whole cell lysates stained with ARG65805 anti-NRBP1 antibody.