

## ARG65806 anti-RBM5 antibody

Package: 50 µl  
Store at: -20°C

### Summary

Product Description	Rabbit Polyclonal antibody recognizes RBM5
Tested Reactivity	Hu, Ms, Rat
Tested Application	IHC-P, WB
Host	Rabbit
Clonality	Polyclonal
Isotype	IgG
Target Name	RBM5
Species	Human
Immunogen	Synthetic peptide around aa. 250-300 of Human RBM5.
Conjugation	Un-conjugated
Alternate Names	RNA-binding motif protein 5; RMB5; Renal carcinoma antigen NY-REN-9; H37; RNA-binding protein 5; G15; Protein G15; Putative tumor suppressor LUCA15; LUCA15

### Application Instructions

Application table	Application	Dilution
	IHC-P	1:50 - 1:200
	WB	1:500 - 1:1000
Application Note	* The dilutions indicate recommended starting dilutions and the optimal dilutions or concentrations should be determined by the scientist.	

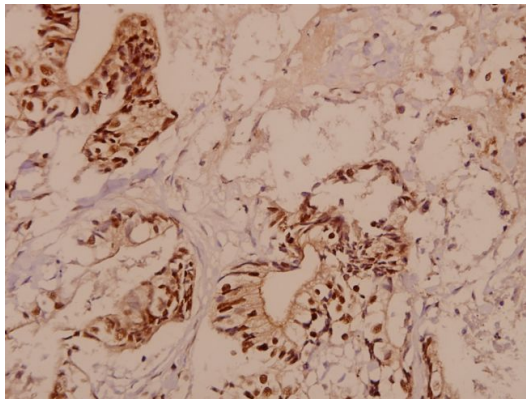
### Properties

Form	Liquid
Purification	Affinity purification with immunogen.
Buffer	PBS (pH 7.2) and 0.05% Sodium azide.
Preservative	0.05% Sodium azide
Concentration	1 mg/ml
Storage instruction	For continuous use, store undiluted antibody at 2-8°C for up to a week. For long-term storage, aliquot and store at -20°C or below. Storage in frost free freezers is not recommended. Avoid repeated freeze/thaw cycles. Suggest spin the vial prior to opening. The antibody solution should be gently mixed before use.
Note	For laboratory research only, not for drug, diagnostic or other use.

## Bioinformation

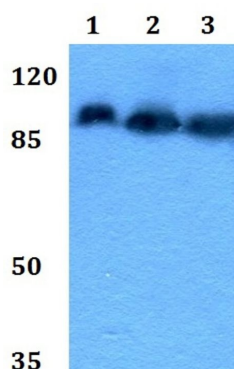
Gene Symbol	RBM5
Gene Full Name	RNA binding motif protein 5
Background	This gene is a candidate tumor suppressor gene which encodes a nuclear RNA binding protein that is a component of the spliceosome A complex. The encoded protein plays a role in the induction of cell cycle arrest and apoptosis through pre-mRNA splicing of multiple target genes including the tumor suppressor protein p53. This gene is located within the tumor suppressor region 3p21.3, and may play a role in the inhibition of tumor transformation and progression of several malignancies including lung cancer. [provided by RefSeq, Oct 2011]
Function	Component of the spliceosome A complex. Regulates alternative splicing of a number of mRNAs. May modulate splice site pairing after recruitment of the U1 and U2 snRNPs to the 5' and 3' splice sites of the intron. May both positively and negatively regulate apoptosis by regulating the alternative splicing of several genes involved in this process, including FAS and CASP2/caspase-2. In the case of FAS, promotes exclusion of exon 6 thereby producing a soluble form of FAS that inhibits apoptosis. In the case of CASP2/caspase-2, promotes exclusion of exon 9 thereby producing a catalytically active form of CASP2/Caspase-2 that induces apoptosis. [UniProt]
Calculated Mw	92 kDa

## Images



ARG65806 anti-RBM5 antibody IHC-P image

Immunohistochemistry: Paraffin-embedded Human colorectal carcinoma stained with ARG65806 anti-RBM5 antibody at 1:50 dilution.



ARG65806 anti-RBM5 antibody WB image

Western blot: 1) HEK293T, 2) Raw264.7, and 3) H9C2 whole cell lysates stained with ARG65806 anti-RBM5 antibody at 1:500 dilution.