

ARG65951 anti-SFRS11 antibody

Package: 100 µl
Store at: -20°C

Summary

Product Description	Rabbit Polyclonal antibody recognizes SFRS11
Tested Reactivity	Hu, Ms, Rat
Predict Reactivity	Bov, Pig
Tested Application	WB
Specificity	Recognizes endogenous levels of SFRS11 protein.
Host	Rabbit
Clonality	Polyclonal
Isotype	IgG
Target Name	SFRS11
Species	Human
Immunogen	KLH-conjugated synthetic peptide around the center region of Human SFRS11.
Conjugation	Un-conjugated
Alternate Names	Arginine-rich 54 kDa nuclear protein; Splicing factor, arginine/serine-rich 11; Serine/arginine-rich splicing factor 11; SFRS11; p54; dJ677H15.2; NET2

Application Instructions

Application table	Application	Dilution
	WB	1:500 - 1:1000
Application Note	* The dilutions indicate recommended starting dilutions and the optimal dilutions or concentrations should be determined by the scientist.	

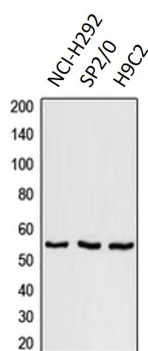
Properties

Form	Liquid
Purification	Affinity purification with immunogen.
Buffer	Liquid (pH 7.3), 0.42% Potassium phosphate, 0.87% NaCl, 0.01% Sodium azide and 30% Glycerol.
Preservative	0.01% Sodium azide
Stabilizer	30% Glycerol
Storage instruction	For continuous use, store undiluted antibody at 2-8°C for up to a week. For long-term storage, aliquot and store at -20°C. Storage in frost free freezers is not recommended. Avoid repeated freeze/thaw cycles. Suggest spin the vial prior to opening. The antibody solution should be gently mixed before use.
Note	For laboratory research only, not for drug, diagnostic or other use.

Bioinformation

Database links	GeneID: 9295 Human Swiss-port # Q05519 Human
Gene Symbol	SRSF11
Gene Full Name	serine/arginine-rich splicing factor 11
Background	This gene encodes 54-kD nuclear protein that contains an arginine/serine-rich region similar to segments found in pre-mRNA splicing factors. Although the function of this protein is not yet known, structure and immunolocalization data suggest that it may play a role in pre-mRNA processing. Alternative splicing results in multiple transcript variants encoding different proteins. In addition, a pseudogene of this gene has been found on chromosome 12.[provided by RefSeq, Sep 2010]
Function	May function in pre-mRNA splicing. [UniProt]
Calculated Mw	54 kDa
Cellular Localization	Nucleus. Note: Colocalizes with spliceosome components. [UniProt]

Images



ARG65951 anti-SFRS11 antibody WB image

Western blot: NCI-H292, SP2/0 and H9C2 whole cell lysates stained with ARG65951 anti-SFRS11 antibody.