

ARG66004 anti-CCL4 / MIP1 beta antibody

Package: 50 µg
Store at: -20°C

Summary

Product Description	Rabbit Polyclonal antibody recognizes CCL4 / MIP1 beta
Tested Reactivity	Hu
Tested Application	ELISA, IHC-P, Neut, WB
Host	Rabbit
Clonality	Polyclonal
Isotype	IgG
Target Name	CCL4 / MIP1 beta
Species	Human
Immunogen	E. coli derived recombinant Human CCL4 / MCP1 beta. (APMGSDPPTA CCFSTARKL PHNFVVDYYE TSSLCSPAV VFQTKRGKQV CADPSESWVQ EYVDLELN)
Conjugation	Un-conjugated
Alternate Names	SCYA4L; Lymphocyte activation gene 1 protein; MIP-1-beta; Macrophage inflammatory protein 1-beta; LAG-1; LAG1; CCL4L; Monocyte adherence-induced protein 5-alpha; Small-inducible cytokine A4-like; SCYA4L1; C-C motif chemokine 4-like; AT744.2

Application Instructions

Application table	Application	Dilution
	ELISA	Sandwich: 0.5 - 2.0 µg/ml with ARG66005 as a detection antibody
	IHC-P	1 µg/ml
	Neut	1.75 - 3.00 µg/ml (To yield [ND50] of the biological activity of Human MIP-1β (50.00 ng/ml))
	WB	0.1 - 0.2 µg/ml
Application Note	IHC-P: Antigen Retrieval: Boil tissue section in Sodium Citrate buffer (pH 6.0) followed by cooling at RT for 20 min. * The dilutions indicate recommended starting dilutions and the optimal dilutions or concentrations should be determined by the scientist.	

Properties

Form	Liquid
Purification	Affinity purification with immunogen.
Buffer	PBS (pH 7.2)
Concentration	1 mg/ml
Storage instruction	For continuous use, store undiluted antibody at 2-8°C for up to a week. For long-term storage, aliquot and store at -20°C or below. Storage in frost free freezers is not recommended. Avoid repeated

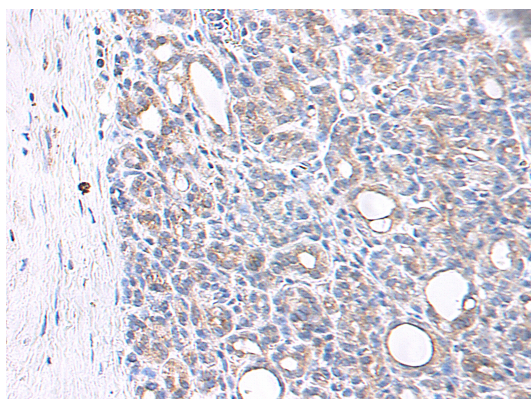
freeze/thaw cycles. Suggest spin the vial prior to opening. The antibody solution should be gently mixed before use.

Note For laboratory research only, not for drug, diagnostic or other use.

Bioinformation

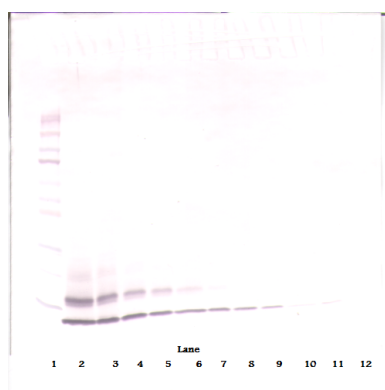
Gene Symbol	CCL4L1
Gene Full Name	chemokine (C-C motif) ligand 4-like 1
Background	This gene is one of several cytokine genes that are clustered on the q-arm of chromosome 17. Cytokines are a family of secreted proteins that function in inflammatory and immunoregulatory processes. The protein encoded by this family member is similar to the chemokine (C-C motif) ligand 4 product, which inhibits HIV entry by binding to the cellular receptor CCR5. The copy number of this gene varies among individuals, where most individuals have one to five copies. Alternative splicing of this gene results in multiple transcript variants. [provided by RefSeq, Apr 2014]
Function	Chemokine that induces chemotaxis of cells expressing CCR5 or CCR1. Inhibits HIV replication in peripheral blood monocytes that express CCR5. [UniProt]
Calculated Mw	10 kDa
PTM	N-terminal processed form MIP-1-beta(3-69) is produced by proteolytic cleavage after secretion from peripheral blood lymphocytes.

Images



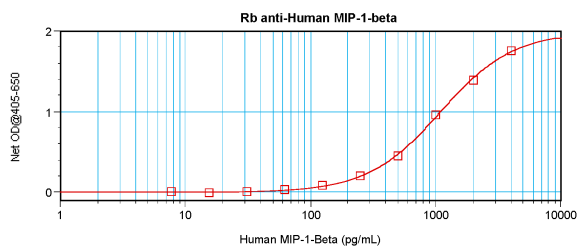
ARG66004 anti-CCL4 / MIP1 beta antibody IHC-P image

Immunohistochemistry: Formalin-fixed and paraffin-embedded sections of Human pancreas adenocarcinoma. The recommended ARG66004 anti-CCL4 / MIP1 beta antibody concentration is 1.0 µg/ml with 2 hour incubation at RT. An HRP-labeled polymer detection system was used with a DAB chromogen. Antigen Retrieval: Boil tissue section in Sodium Citrate buffer (pH 6.0) followed by cooling at RT for 20 min.



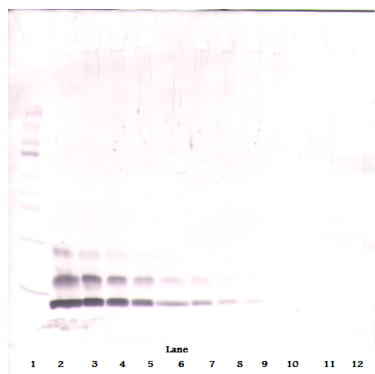
ARG66004 anti-CCL4 / MIP1 beta antibody WB image

Western blot: 250 - 0.24 ng of Human MIP-1β stained with ARG66004 anti-CCL4 / MIP1 beta antibody, under non-reducing conditions.



ARG66004 anti-CCL4 / MIP1 beta antibody standard curve image

Sandwich ELISA: ARG66004 anti-CCL4 / MIP1 beta antibody as a capture antibody at 0.5 - 2.0 $\mu\text{g}/\text{ml}$ combined with ARG66005 anti-CCL4 / MCP1 beta antibody (Biotin) as a detection antibody. Results of a typical standard run with optical density reading at 405 - 650 nm.



ARG66004 anti-CCL4 / MIP1 beta antibody WB image

Western blot: 250 - 0.24 ng of Human MIP-1 β stained with ARG66004 anti-CCL4 / MIP1 beta antibody, under reducing conditions.