

## ARG66015 anti-IL3 antibody

Package: 50 µg  
Store at: -20°C

### Summary

Product Description	Rabbit Polyclonal antibody recognizes IL3
Tested Reactivity	Ms
Tested Application	ELISA, Neut, WB
Host	Rabbit
Clonality	Polyclonal
Isotype	IgG
Target Name	IL3
Species	Mouse
Immunogen	E. coli derived recombinant Mouse IL3. (MDTHRLTRL NCSSIVKEII GKLPEPELKT DDEGPSLRNK SFRRVNLSKF VESQGEVDPE DRYVIKSNLQ KLNCCLPSTA NDSALPGVFI RDLDDFRKKL RFYMVHLNDL ETVLTSRPPQ PASGSVSPNR GTVEC)
Conjugation	Un-conjugated
Alternate Names	MCGF; Mast cell growth factor; P-cell-stimulating factor; Hematopoietic growth factor; IL-3; Interleukin-3; Multipotential colony-stimulating factor; MULTI-CSF

### Application Instructions

Application table	Application	Dilution
	ELISA	Sandwich: 0.5 - 2.0 µg/ml with ARG66016 as a detection antibody
	Neut	0.15 - 0.20 µg/ml (To yield [ND50] of the biological activity of mIL-3 (0.5 ng/ml) )
	WB	0.1 - 0.2 µg/ml
Application Note	* The dilutions indicate recommended starting dilutions and the optimal dilutions or concentrations should be determined by the scientist.	

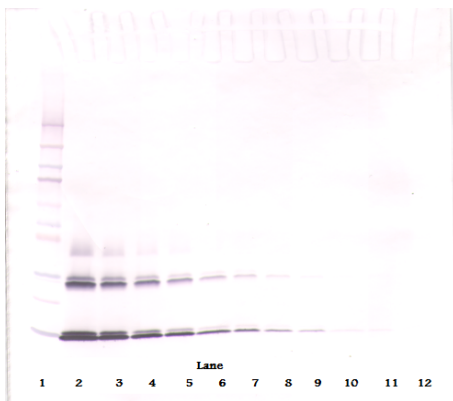
### Properties

Form	Liquid
Purification	Affinity purification with immunogen.
Buffer	PBS (pH 7.2)
Concentration	1 mg/ml
Storage instruction	For continuous use, store undiluted antibody at 2-8°C for up to a week. For long-term storage, aliquot and store at -20°C or below. Storage in frost free freezers is not recommended. Avoid repeated freeze/thaw cycles. Suggest spin the vial prior to opening. The antibody solution should be gently mixed before use.
Note	For laboratory research only, not for drug, diagnostic or other use.

Bioinformation

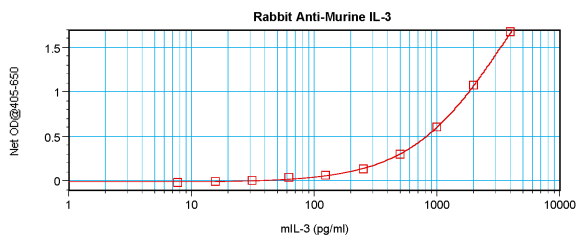
Database links	<a href="#">GeneID: 16187 Mouse</a> <a href="#">Swiss-port # P01586 Mouse</a>
Gene Symbol	IL3
Gene Full Name	interleukin 3
Background	The protein encoded by this gene is a potent growth promoting cytokine. This cytokine is capable of supporting the proliferation of a broad range of hematopoietic cell types. It is involved in a variety of cell activities such as cell growth, differentiation and apoptosis. This cytokine has been shown to also possess neurotrophic activity, and it may be associated with neurologic disorders. [provided by RefSeq, Jul 2008]
Function	Granulocyte/macrophage colony-stimulating factors are cytokines that act in hematopoiesis by controlling the production, differentiation, and function of 2 related white cell populations of the blood, the granulocytes and the monocytes-macrophages.  This CSF induces granulocytes, macrophages, mast cells, stem cells, erythroid cells, eosinophils and megakaryocytes. [UniProt]
Calculated Mw	17 kDa

Images



ARG66015 anti-IL3 antibody WB image

Western blot: 250 - 0.24 ng of Mouse IL-3 stained with ARG66015 anti-IL3 antibody, under non-reducing conditions.

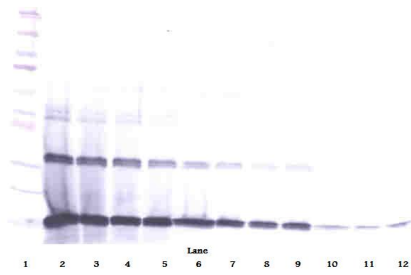


ARG66015 anti-IL3 antibody standard curve image

Sandwich ELISA: ARG66015 anti-IL3 antibody as a capture antibody at 0.5 - 2.0 µg/ml combined with ARG66016 anti-IL3 antibody (Biotin) as a detection antibody. Results of a typical standard run with optical density reading at 405 - 650 nm.

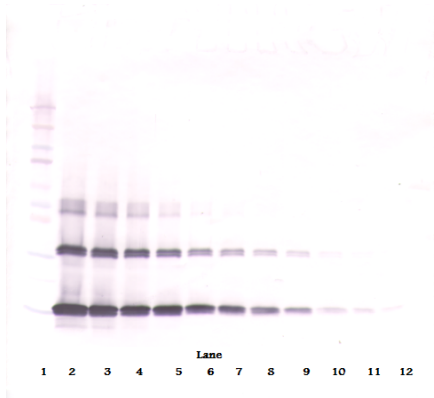
#### ARG66015 anti-IL3 antibody WB image

Western blot: 250 - 0.24 ng of Mouse IL-3 stained with ARG66015 anti-IL3 antibody, under reducing conditions.



#### ARG66015 anti-IL3 antibody WB image

Western blot: 250 - 0.24 ng of Mouse IL-3 stained with ARG66015 anti-IL3 antibody, under reducing conditions.



#### ARG66015 anti-IL3 antibody WB image

Western blot: 250 - 0.24 ng of Mouse IL-3 stained with ARG66015 anti-IL3 antibody, under non-reducing conditions.

