

## ARG66031 anti-CX3CL1 antibody

Package: 50 µg  
Store at: -20°C

### Summary

Product Description	Rabbit Polyclonal antibody recognizes CX3CL1
Tested Reactivity	Hu
Tested Application	ELISA, IHC-P, WB
Host	Rabbit
Clonality	Polyclonal
Isotype	IgG
Target Name	CX3CL1
Species	Human
Immunogen	E. coli derived recombinant Human CX3CL1. (QHHGVTKCNI TCSKMTSKIP VALLIHYQQN QASCGKRAII LETRQHRLFC ADPKEQWVKD AMQHLDQRQA ALTRNG)
Conjugation	Un-conjugated
Alternate Names	neurotactin; CXC3; C3Xkine; NTN; NTT; C-X3-C motif chemokine 1; CXC3C; Neurotactin; ABCD-3; SCYD1; Fractalkine; Small-inducible cytokine D1; CX3C membrane-anchored chemokine; fractalkine

### Application Instructions

Application table	Application	Dilution
	ELISA	Sandwich: 0.5 - 2.0 µg/ml with ARG66032 as a detection antibody
	IHC-P	0.25 µg/ml
	WB	0.1 - 0.2 µg/ml
Application Note	IHC-P: Antigen Retrieval: Boil tissue section in Sodium Citrate buffer (pH 6.0) followed by cooling at RT for 20 min. * The dilutions indicate recommended starting dilutions and the optimal dilutions or concentrations should be determined by the scientist.	

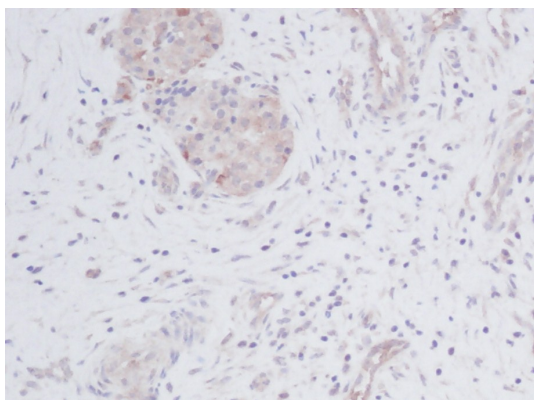
### Properties

Form	Liquid
Purification	Affinity purification with immunogen.
Buffer	PBS (pH 7.2)
Concentration	1 mg/ml
Storage instruction	For continuous use, store undiluted antibody at 2-8°C for up to a week. For long-term storage, aliquot and store at -20°C or below. Storage in frost free freezers is not recommended. Avoid repeated freeze/thaw cycles. Suggest spin the vial prior to opening. The antibody solution should be gently mixed before use.

## Bioinformation

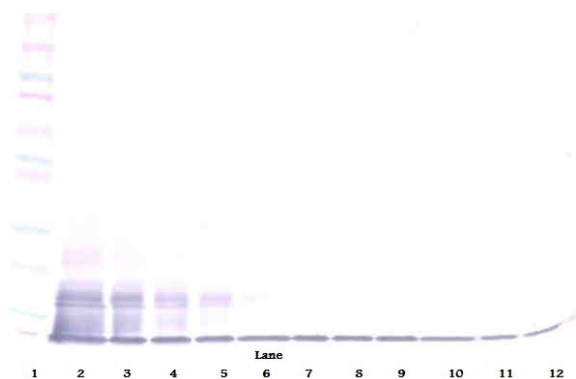
Database links	<a href="#">GeneID: 6376 Human</a> <a href="#">Swiss-port # P78423 Human</a>
Gene Symbol	CX3CL1
Gene Full Name	chemokine (C-X3-C motif) ligand 1
Function	The soluble form is chemotactic for T-cells and monocytes, but not for neutrophils. The membrane-bound form promotes adhesion of those leukocytes to endothelial cells. May play a role in regulating leukocyte adhesion and migration processes at the endothelium. Binds to CX3CR1. [UniProt]
Calculated Mw	42 kDa
PTM	A soluble short 95 kDa form may be released by proteolytic cleavage from the long membrane-anchored form. O-glycosylated with core 1 or possibly core 8 glycans.

## Images



ARG66031 anti-CX3CL1 antibody IHC-P image

Immunohistochemistry: Formalin-fixed and paraffin-embedded sections of Human pancreas malignant ductal adenocarcinoma. The recommended ARG66031 anti-CX3CL1 antibody concentration is 0.25 µg/ml with an overnight incubation at 4°C. An HRP-labeled polymer detection system was used with a DAB chromogen. Antigen Retrieval: Boil tissue section in Sodium Citrate buffer (pH 6.0) followed by cooling at RT for 20 min.



ARG66031 anti-CX3CL1 antibody WB image

Western blot: 250 - 0.24 ng of Human Fractalkine stained with ARG66031 anti-CX3CL1 antibody, under non-reducing conditions.

# ARG66031 anti-CX3CL1 antibody WB image

Western blot: 250 - 0.24 ng of Human Fractalkine stained with ARG66031 anti-CX3CL1 antibody, under reducing conditions.

