

## ARG66033 anti-Cardiotrophin 1 antibody

Package: 50 µg  
Store at: -20°C

### Summary

Product Description	Rabbit Polyclonal antibody recognizes Cardiotrophin 1
Tested Reactivity	Hu
Tested Application	ELISA, IHC-P, Neut, WB
Host	Rabbit
Clonality	Polyclonal
Isotype	IgG
Target Name	Cardiotrophin 1
Species	Human
Immunogen	E. coli derived recombinant Human Cardiotrophin 1. (SRREGSLEDP QTDSSVSLLP HLEAKIRQTH SLAHLTKYA EQLLQEYVQL QGDPFGLPSF SPPRLPVAGL SAPAPSHAGL PVHERLRDLA AALAALPPLL DAVCRRQAEI NPRAPRLRR LEDAARQARA LGAAVEALLA ALGAANRGPR AEPPAATASA ASATGVFPAK VLGLRVCGLY REWLSRTEGD LGQLLPGGSA)
Conjugation	Un-conjugated
Alternate Names	CT-1; CT1; Cardiotrophin-1

### Application Instructions

Application table	Application	Dilution
	ELISA	Sandwich: 0.5 - 2.0 µg/ml with ARG66034 as a detection antibody
	IHC-P	0.25 µg/ml
	Neut	0.25 - 0.40 µg/ml (To yield [ND50] of the biological activity of hCardiotrophin-1 (15 ng/ml) )
	WB	0.1 - 0.2 µg/ml
Application Note	IHC-P: Antigen Retrieval: Boil tissue section in Sodium Citrate buffer (pH 6.0) followed by cooling at RT for 20 min. * The dilutions indicate recommended starting dilutions and the optimal dilutions or concentrations should be determined by the scientist.	

### Properties

Form	Liquid
Purification	Affinity purification with immunogen.
Buffer	PBS (pH 7.2)
Concentration	1 mg/ml
Storage instruction	For continuous use, store undiluted antibody at 2-8°C for up to a week. For long-term storage, aliquot and store at -20°C or below. Storage in frost free freezers is not recommended. Avoid repeated

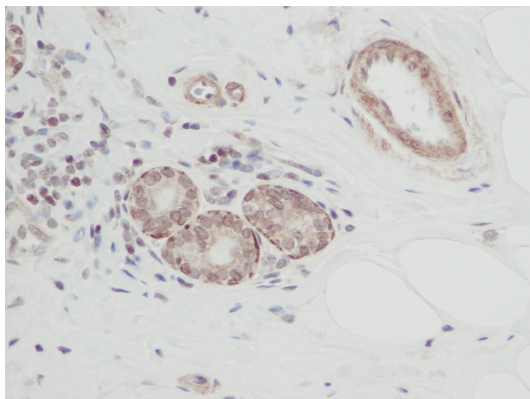
freeze/thaw cycles. Suggest spin the vial prior to opening. The antibody solution should be gently mixed before use.

**Note** For laboratory research only, not for drug, diagnostic or other use.

## Bioinformation

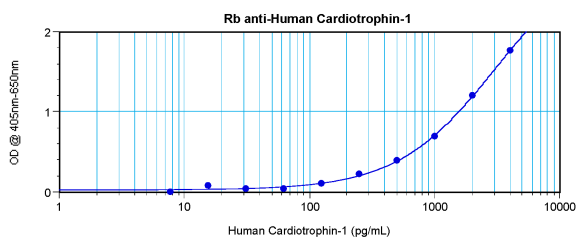
Database links	<a href="#">GeneID: 1489 Human</a> <a href="#">Swiss-port # Q16619 Human</a>
Gene Symbol	CTF1
Gene Full Name	cardiotrophin 1
Background	The protein encoded by this gene is a secreted cytokine that induces cardiac myocyte hypertrophy in vitro. It has been shown to bind and activate the ILST/gp130 receptor. Two transcript variants encoding different isoforms have been found for this gene. [provided by RefSeq, Dec 2008]
Function	Induces cardiac myocyte hypertrophy in vitro. Binds to and activates the ILST/gp130 receptor. [UniProt]
Calculated Mw	21 kDa

## Images



ARG66033 anti-Cardiotrophin 1 antibody IHC-P image

Immunohistochemistry: Formalin-fixed and paraffin-embedded sections of Human breast invasive ductal carcinoma. The recommended ARG66033 anti-Cardiotrophin 1 antibody concentration is 0.25 µg/ml with an overnight incubation at 4°C. An HRP-labeled polymer detection system was used with a DAB chromogen. Antigen Retrieval: Boil tissue section in Sodium Citrate buffer (pH 6.0) followed by cooling at RT for 20 min.



ARG66033 anti-Cardiotrophin 1 antibody standard curve image

Sandwich ELISA: ARG66033 anti-Cardiotrophin 1 antibody as a capture antibody at 0.5 - 2.0 µg/ml combined with ARG66034 anti-Cardiotrophin 1 antibody (Biotin) as a detection antibody. Results of a typical standard run with optical density reading at 405 - 650 nm.