

## ARG66041 anti-CCL23 antibody

Package: 50 µg  
Store at: -20°C

### Summary

Product Description	Rabbit Polyclonal antibody recognizes CCL23
Tested Reactivity	Hu, Ms
Tested Application	ELISA, Neut, WB
Host	Rabbit
Clonality	Polyclonal
Isotype	IgG
Target Name	CCL23
Species	Human
Immunogen	E. coli derived recombinant Human CCL23. (RVTKDAETEF MMSKLPLENP VLLDRFHATS ADCCISYTPR SIPCSLLESY FETNSECSKP GVIFLTKKGR RFCANPSDKQ VQVCMRMLKL DTRIKTRKN)
Conjugation	Un-conjugated
Alternate Names	Ckb-8-1; CK-beta-8; CKB-8; 27-99; CK-BETA-8; 30-99; SCYA23; Ckb8; 22-99; Small-inducible cytokine A23; C-C motif chemokine 23; MIP-1; hmrp-2a; MIP3; Myeloid progenitor inhibitory factor 1; Macrophage inflammatory protein 3; 19-99; Ckb-8; MIP-3

### Application Instructions

Application table	Application	Dilution
	ELISA	Sandwich: 0.5 - 2.0 µg/ml with ARG66042 as a detection antibody
	Neut	2.0 - 4.0 µg/ml (To yield [ND50] of the biological activity of hMIP-3 (100.0 ng/ml) )
	WB	0.1 - 0.2 µg/ml
Application Note	* The dilutions indicate recommended starting dilutions and the optimal dilutions or concentrations should be determined by the scientist.	

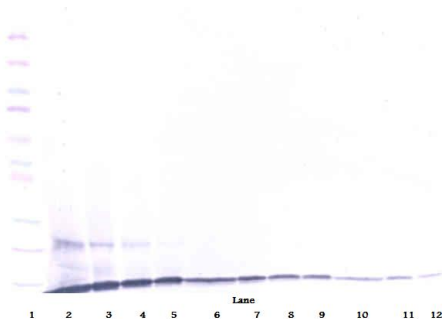
### Properties

Form	Liquid
Purification	Affinity purification with immunogen.
Buffer	PBS (pH 7.2)
Concentration	1 mg/ml
Storage instruction	For continuous use, store undiluted antibody at 2-8°C for up to a week. For long-term storage, aliquot and store at -20°C or below. Storage in frost free freezers is not recommended. Avoid repeated freeze/thaw cycles. Suggest spin the vial prior to opening. The antibody solution should be gently mixed before use.

Bioinformation

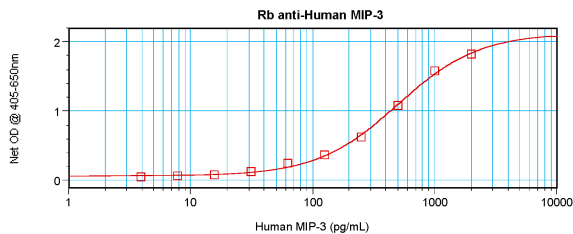
Database links	<a href="#">GeneID: 6368 Human</a> <a href="#">Swiss-port # P55773 Human</a>
Gene Symbol	CCL23
Gene Full Name	chemokine (C-C motif) ligand 23
Background	This gene is one of several chemokine genes clustered on the q-arm of chromosome 17. Chemokines form a superfamily of secreted proteins involved in immunoregulatory and inflammatory processes. The superfamily is divided into four subfamilies based on the arrangement of the N-terminal cysteine residues of the mature peptide. This chemokine, a member of the CC subfamily, displays chemotactic activity on resting T lymphocytes and monocytes, lower activity on neutrophils and no activity on activated T lymphocytes. The protein is also a strong suppressor of colony formation by a multipotential hematopoietic progenitor cell line. In addition, the product of this gene is a potent agonist of the chemokine (C-C motif) receptor 1. Alternative splicing results in multiple transcript variants that encode different isoforms. [provided by RefSeq, Jul 2013]
Function	Shows chemotactic activity for monocytes, resting T-lymphocytes, and neutrophils, but not for activated lymphocytes. Inhibits proliferation of myeloid progenitor cells in colony formation assays. This protein can bind heparin. Binds CCR1. CCL23(19-99), CCL23(22-99), CCL23(27-99), CCL23(30-99) are more potent chemoattractants than the small-inducible cytokine A23. [UniProt]
Calculated Mw	13 kDa

Images



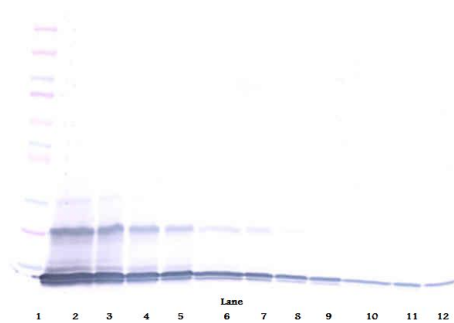
ARG66041 anti-CCL23 antibody WB image

Western blot: 250 - 0.24 ng of Human MIP-3 stained with ARG66041 anti-CCL23 antibody, under reducing conditions.



ARG66041 anti-CCL23 antibody standard curve image

Sandwich ELISA: ARG66041 anti-CCL23 antibody as a capture antibody at 0.5 - 2.0 µg/ml combined with ARG66042 anti-CCL23 antibody (Biotin) as a detection antibody. Results of a typical standard run with optical density reading at 405 - 650 nm.



#### ARG66041 anti-CCL23 antibody WB image

Western blot: 250 - 0.24 ng of Human MIP-3 stained with ARG66041 anti-CCL23 antibody, under non-reducing conditions.