

ARG66056 anti-CXCL13 / BCA1 antibody (Biotin)

Package: 50 µg
Store at: 4°C

Summary

| | |
|---------------------|---|
| Product Description | Biotin-conjugated Rabbit Polyclonal antibody recognizes CXCL13 / BCA1 |
| Tested Reactivity | Hu |
| Tested Application | ELISA, WB |
| Host | Rabbit |
| Clonality | Polyclonal |
| Isotype | IgG |
| Target Name | CXCL13 / BCA1 |
| Species | Human |
| Immunogen | E. coli derived recombinant Human CXCL13 / BCA1. (VLEVYYTSLR CRCVQESSVF IPRRFIDRIQ ILPRGNGCPR KEIIVWKKNK SIVCVDPQAE WIQRMMEVLR KRSSSTLPVP VFKRKIP) |
| Conjugation | Biotin |
| Alternate Names | BCA-1; Angie; C-X-C motif chemokine 13; CXC chemokine BLC; ANGIE2; B lymphocyte chemoattractant; B cell-attracting chemokine 1; BLR1L; Small-inducible cytokine B13; SCYB13; ANGIE; BLC; BCA1 |

Application Instructions

| Application table | Application | Dilution |
|-------------------|--|--|
| | ELISA | Direct: 0.25 - 1.0 µg/ml Sandwich: 0.25 - 1.0 µg/ml with ARG66055 as a capture antibody |
| | WB | 0.1 - 0.2 µg/ml |
| Application Note | * The dilutions indicate recommended starting dilutions and the optimal dilutions or concentrations should be determined by the scientist. | |

Properties

| | |
|---------------------|--|
| Form | Liquid |
| Purification | Purified by affinity chromatography. |
| Buffer | PBS (pH 7.2) |
| Concentration | 1 mg/ml |
| Storage instruction | Aliquot and store in the dark at 2-8°C. Keep protected from prolonged exposure to light. Avoid repeated freeze/thaw cycles. Suggest spin the vial prior to opening. The antibody solution should be gently mixed before use. |
| Note | For laboratory research only, not for drug, diagnostic or other use. |

Bioinformation

Database links

[GeneID: 10563 Human](#)

[Swiss-port # O43927 Human](#)

Gene Symbol

CXCL13

Gene Full Name

chemokine (C-X-C motif) ligand 13

Background

B lymphocyte chemoattractant, independently cloned and named Angie, is an antimicrobial peptide and CXC chemokine strongly expressed in the follicles of the spleen, lymph nodes, and Peyer's patches. It preferentially promotes the migration of B lymphocytes (compared to T cells and macrophages), apparently by stimulating calcium influx into, and chemotaxis of, cells expressing Burkitt's lymphoma receptor 1 (BLR-1). It may therefore function in the homing of B lymphocytes to follicles. [provided by RefSeq, Oct 2014]

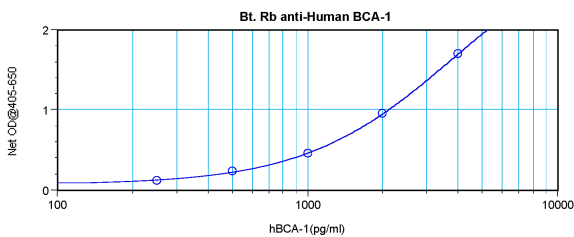
Function

Chemotactic for B-lymphocytes but not for T-lymphocytes, monocytes and neutrophils. Does not induce calcium release in B-lymphocytes. Binds to BLR1/CXCR5. [UniProt]

Calculated Mw

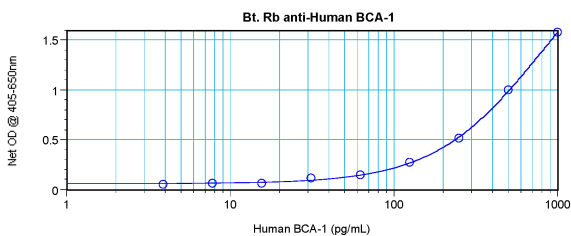
13 kDa

Images



ARG66056 anti-CXCL13 / BCA1 antibody (Biotin) standard curve image

Direct ELISA: ARG66056 anti-CXCL13 / BCA1 antibody (Biotin) at 0.25 - 1.0 $\mu\text{g/ml}$ results of a typical standard run with optical density reading at 405 - 650 nm.



ARG66056 anti-CXCL13 / BCA1 antibody (Biotin) standard curve image

Sandwich ELISA: ARG66056 anti-CXCL13 / BCA1 antibody (Biotin) as a detection antibody at 0.25 - 1.0 $\mu\text{g/ml}$ combined with ARG66055 anti-CXCL13 / BCA1 antibody as a capture antibody. Results of a typical standard run with optical density reading at 405 - 650 nm.