

ARG66096 anti-CD22 antibody

Package: 50 µg
Store at: -20°C

Summary

Product Description	Rabbit Polyclonal antibody recognizes CD22
Tested Reactivity	Hu
Tested Application	ELISA, WB
Host	Rabbit
Clonality	Polyclonal
Isotype	IgG
Target Name	CD22
Species	Human
Immunogen	CHO cells derived recombinant Human CD22. (SKWVFEHPET LYAWEGACVW IPCTYRALDG DLESFILFHN PEYNKNTSKF DGTRLYESTK DGKVPSEQKR VQFLGDKNKN CTLSIHPVHL NDSGQLGLRM ESKTEKWMER IHLNVSERPF PPHIQLPPEI QESQEVTLTC LLNFSCYGYG IQLQWLLEGV PMRQAAVTST SLTIKSVFTR SELKFSPQWS HHGKIVTCQL QDADGKFLSN DTVQLNVKHT PKLEIKVTPS DAIVREGDSV TMTCEVSSSN PEYTTVSWLK DGTSLKKQNT FTLNLREVTK DQSGKYCCQV SNDVGPGRSE EVFLQVQYAP EPSTVQILHS PAVEGSQVEF LCMSLANPLP TNYTWYHNGK EMQGRTEEKV HIPKILPWAH GTYSCVAENI LGTGQRGPGA ELDVQYPPKK VTTVIQNPMPI IREGDVTLS CNYNSSNPSV TRYEWKPHGA WEEPSLGVLK IQNVGWDNTT IACARCNSWC SWASPVALNV QYAPRDVVRV KIKPLSEIHS GNSVSLQCDF SSSHPKEVQF FWEKNGRLLG KESQLNFDSI SPEDAGSYSC WVNNSIGQTA SKAWTLEVLV APRRLRVSMS PGDQVMGEGKS ATLTCESDAN PPVSHYTWFD WNNQSLPHHS QKLRLEPVKV QHSGAYWCQG TNSVGKGRSP LSTLTVVYSP ETIGRR)
Conjugation	Un-conjugated
Alternate Names	B-lymphocyte cell adhesion molecule; B-cell receptor CD22; T-cell surface antigen Leu-14; BL-CAM; SIGLEC-2; Sialic acid-binding Ig-like lectin 2; Siglec-2; CD antigen CD22; SIGLEC2

Application Instructions

Application table	Application	Dilution
	ELISA	Sandwich: 0.5 - 2.0 µg/ml with ARG66097 as a detection antibody
	WB	0.1 - 0.2 µg/ml
Application Note	* The dilutions indicate recommended starting dilutions and the optimal dilutions or concentrations should be determined by the scientist.	

Properties

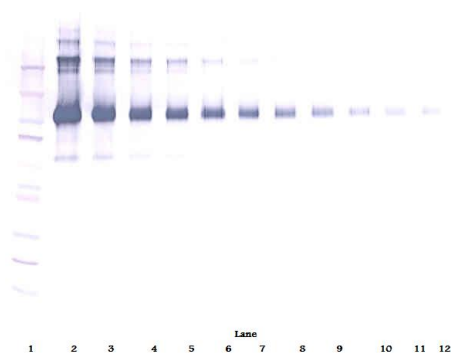
Form	Liquid
Purification	Affinity purification with immunogen.
Buffer	PBS (pH 7.2)
Concentration	1 mg/ml

Storage instruction	For continuous use, store undiluted antibody at 2-8°C for up to a week. For long-term storage, aliquot and store at -20°C or below. Storage in frost free freezers is not recommended. Avoid repeated freeze/thaw cycles. Suggest spin the vial prior to opening. The antibody solution should be gently mixed before use.
Note	For laboratory research only, not for drug, diagnostic or other use.

Bioinformation

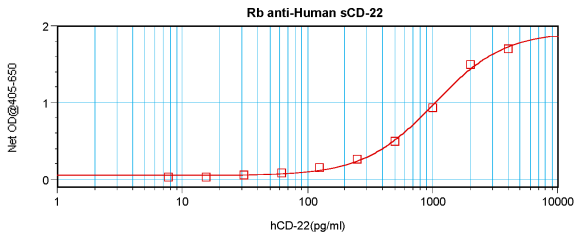
Database links	GeneID: 933 Human Swiss-port # P20273 Human
Gene Symbol	CD22
Gene Full Name	CD22 molecule
Function	Mediates B-cell B-cell interactions. May be involved in the localization of B-cells in lymphoid tissues. Binds sialylated glycoproteins; one of which is CD45. Preferentially binds to alpha-2,6-linked sialic acid. The sialic acid recognition site can be masked by cis interactions with sialic acids on the same cell surface. Upon ligand induced tyrosine phosphorylation in the immune response seems to be involved in regulation of B-cell antigen receptor signaling. Plays a role in positive regulation through interaction with Src family tyrosine kinases and may also act as an inhibitory receptor by recruiting cytoplasmic phosphatases via their SH2 domains that block signal transduction through dephosphorylation of signaling molecules. [UniProt]
Research Area	Cancer antibody; Developmental Biology antibody; Immune System antibody; Immature B Cell Marker antibody
Calculated Mw	95 kDa
PTM	Phosphorylation of Tyr-762, Tyr-807 and Tyr-822 are involved in binding to SYK, GRB2 and SYK, respectively. Phosphorylation of Tyr-842 is involved in binding to SYK, PLCG2 and PIK3R1/PIK3R2. Phosphorylated on tyrosine residues by LYN.

Images



ARG66096 anti-CD22 antibody WB image

Western blot: 250 - 0.24 ng of Human CD22 stained with ARG66096 anti-CD22 antibody, under non-reducing conditions.



ARG66096 anti-CD22 antibody standard curve image

Sandwich ELISA: ARG66096 anti-CD22 antibody as a capture antibody at 0.5 - 2.0 µg/ml combined with ARG66097 anti-CD22 antibody (Biotin) as a detection antibody. Results of a typical standard run with optical density reading at 405 - 650 nm.