

ARG66102 anti-GDF3 antibody

Package: 50 µg
Store at: -20°C

Summary

Product Description	Rabbit Polyclonal antibody recognizes GDF3
Tested Reactivity	Hu
Tested Application	ELISA, IHC-P
Host	Rabbit
Clonality	Polyclonal
Isotype	IgG
Target Name	GDF3
Species	Human
Immunogen	E. coli derived recombinant Human GDF3. (AAIPVPKLSC KNLCHRHQLF INFRDLGWHK WIIAPKGFMA NYCHGECPPS LTISLNSSNY AFMQALMHAV DPEIPQAVCI PTKLSPISML YQDNNNDNVIL RHYEDMVVDE CGCG)
Conjugation	Un-conjugated
Alternate Names	GDF-3; MCOP7; Growth/differentiation factor 3; KFS3; MCOPCB6

Application Instructions

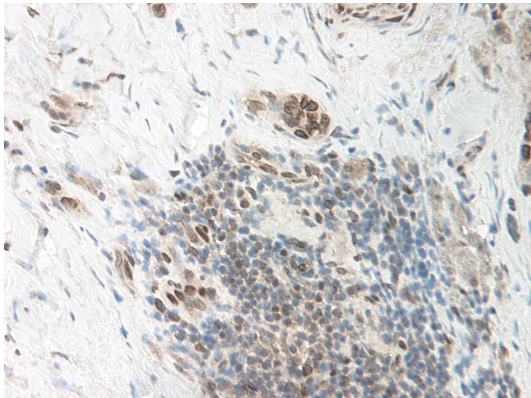
Application table	Application	Dilution
	ELISA	Sandwich: 0.5 - 2.0 µg/ml with ARG66103 as a detection antibody
	IHC-P	0.125 µg/ml
Application Note	IHC-P: Antigen Retrieval: Boil tissue section in Sodium Citrate buffer (pH 6.0) followed by cooling at RT for 20 min. * The dilutions indicate recommended starting dilutions and the optimal dilutions or concentrations should be determined by the scientist.	

Properties

Form	Liquid
Purification	Affinity purification with immunogen.
Buffer	PBS (pH 7.2)
Concentration	1 mg/ml
Storage instruction	For continuous use, store undiluted antibody at 2-8°C for up to a week. For long-term storage, aliquot and store at -20°C or below. Storage in frost free freezers is not recommended. Avoid repeated freeze/thaw cycles. Suggest spin the vial prior to opening. The antibody solution should be gently mixed before use.
Note	For laboratory research only, not for drug, diagnostic or other use.

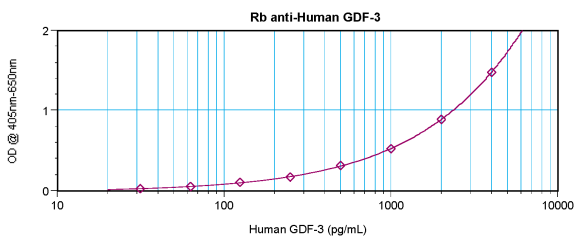
Database links	GeneID: 9573 Human Swiss-port # Q9NR23 Human
Gene Symbol	GDF3
Gene Full Name	growth differentiation factor 3
Background	The protein encoded by this gene is a member of the bone morphogenetic protein (BMP) family and the TGF-beta superfamily. This group of proteins is characterized by a polybasic proteolytic processing site which is cleaved to produce a mature protein containing seven conserved cysteine residues. The members of this family are regulators of cell growth and differentiation in both embryonic and adult tissues. [provided by RefSeq, Jul 2008]
Calculated Mw	41 kDa
PTM	Synthesized as large precursor molecule that undergo proteolytic cleavage, releasing the pro-domain from the active, receptor binding, C-terminal region of the molecule.

Images



ARG66102 anti-GDF3 antibody IHC-P image

Immunohistochemistry: Formalin-fixed and paraffin-embedded sections of Human breast invasive ductal carcinoma. The recommended ARG66102 anti-GDF3 antibody concentration is 0.125 µg/ml with an overnight incubation at 4°C. An HRP-labeled polymer detection system was used with a DAB chromogen. Antigen Retrieval: Boil tissue section in Sodium Citrate buffer (pH 6.0) followed by cooling at RT for 20 min.



ARG66102 anti-GDF3 antibody standard curve image

Sandwich ELISA: ARG66102 anti-GDF3 antibody as a capture antibody at 0.5 - 2.0 µg/ml combined with ARG66103 anti-GDF3 antibody (Biotin) as a detection antibody. Results of a typical standard run with optical density reading at 405 - 650 nm.