

## ARG66146 anti-CD106 / VCAM1 antibody

Package: 50 µg  
Store at: -20°C

### Summary

Product Description	Rabbit Polyclonal antibody recognizes CD106 / VCAM1
Tested Reactivity	Hu
Tested Application	ELISA, WB
Host	Rabbit
Clonality	Polyclonal
Isotype	IgG
Target Name	CD106 / VCAM1
Species	Human
Immunogen	HEK293 cells derived recombinant Human VCAM1. (FKIETTPESR YLAQIGDSVS LTCSTTGCEP PFFSWRTQID SPLNGKVTNE GTTSTLTMNP VSGNEHSYL CTATCESRKL EKGIQVEIYS FPKDPEIHLG GPLEAGKPIT VKCSVADVYP FDRLEIDLLK GDHLMKSQEF LEDADRKSLE TKSLEVTFTP VIEDIGKVLV CRAKLHIDEM DSVPTVRQAV KELQVYISPK NTVISVNPST KLQEGGSVTM TCSSEGLPAP EIFWSKKLDN GNLQHLSGNA TLLIAMRME DSGIYVCEGV NLIQKNRKEV ELIVQEKPFV VEISGPRIA AQIGDSVMLT CSVMGCESPS FSWRTQIDSP LSGKVRSEGT NSTLTLSPVS FENEHSYLCT VTCGHKKLEK GIQVELYSFP RDPEIEMSGG LVNGSSVTVS CKVPSVYPLD RLEIELLKE TLENIKFLE DTDMSLENK SLEMTFIPTI EDTGKALVCQ AKLHIDMEF EPKQRQSTQT LYVNVAPRDT TVLVSPSSIL EEGSSVNMTCL SQGFAPKI LWSRQLPNGE LQPLSENLATL TLSTKMEDS GVYLCEGINQ AGRSRKEVEL IIQVTPKDIK LTAFPSESVK EGDTVIISCT CGNVPETWII LKKAETGDT VLKSIDGAYT IRKAQLKDAG VYECESKNKV GSQLRSLTLD VQGRENNKDY FSP)
Conjugation	Un-conjugated
Alternate Names	CD106; INCAM-100; Vascular cell adhesion protein 1; VCAM-1; CD antigen CD106; V-CAM 1

### Application Instructions

Application table	Application	Dilution
	ELISA	Sandwich: 0.5 - 2.0 µg/ml with ARG66147 as a detection antibody
WB	0.1 - 0.2 µg/ml	
Application Note	* The dilutions indicate recommended starting dilutions and the optimal dilutions or concentrations should be determined by the scientist.	

### Properties

Form	Liquid
Purification	Affinity purification with immunogen.
Buffer	PBS (pH 7.2)
Concentration	1 mg/ml
Storage instruction	For continuous use, store undiluted antibody at 2-8°C for up to a week. For long-term storage, aliquot

and store at -20°C or below. Storage in frost free freezers is not recommended. Avoid repeated freeze/thaw cycles. Suggest spin the vial prior to opening. The antibody solution should be gently mixed before use.

**Note**

For laboratory research only, not for drug, diagnostic or other use.

## Bioinformation

**Database links**

[GeneID: 7412 Human](#)

[Swiss-port # P19320 Human](#)

**Gene Symbol**

VCAM1

**Gene Full Name**

vascular cell adhesion molecule 1

**Background**

This gene is a member of the Ig superfamily and encodes a cell surface sialoglycoprotein expressed by cytokine-activated endothelium. This type I membrane protein mediates leukocyte-endothelial cell adhesion and signal transduction, and may play a role in the development of atherosclerosis and rheumatoid arthritis. Three alternatively spliced transcripts encoding different isoforms have been described for this gene. [provided by RefSeq, Dec 2010]

**Function**

Important in cell-cell recognition. Appears to function in leukocyte-endothelial cell adhesion. Interacts with integrin alpha-4/beta-1 (ITGA4/ITGB1) on leukocytes, and mediates both adhesion and signal transduction. The VCAM1/ITGA4/ITGB1 interaction may play a pathophysiologic role both in immune responses and in leukocyte emigration to sites of inflammation. [UniProt]

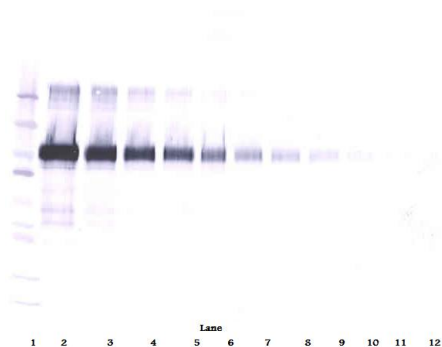
**Calculated Mw**

81 kDa

**PTM**

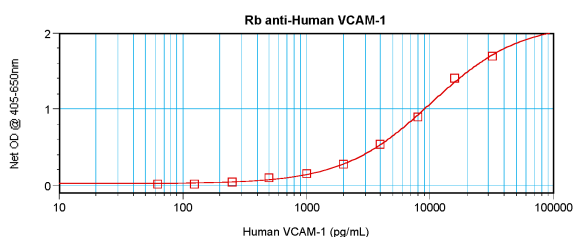
Sialoglycoprotein.

## Images



ARG66146 anti-CD106 / VCAM1 antibody WB image

Western blot: 250 - 0.24 ng of Human VCAM-1 stained with ARG66146 anti-CD106 / VCAM1 antibody, under reducing conditions.



ARG66146 anti-CD106 / VCAM1 antibody standard curve image

Sandwich ELISA: ARG66146 anti-CD106 / VCAM1 antibody as a capture antibody at 0.5 - 2.0 µg/ml combined with ARG66147 anti-VCAM1 antibody (Biotin) as a detection antibody. Results of a typical standard run with optical density reading at 405 - 650 nm.

ARG66146 anti-CD106 / VCAM1 antibody WB image

Western blot: 250 - 0.24 ng of Human VCAM-1 stained with ARG66146 anti-CD106 / VCAM1 antibody, under non-reducing conditions.

