

ARG66173 anti-LALBA / Lactalbumin antibody

Package: 100 µg
Store at: -20°C

Summary

Product Description	Mouse Monoclonal antibody recognizes LALBA / Lactalbumin
Tested Reactivity	Hu
Tested Application	IHC-P, WB
Specificity	The antibody detects endogenous alpha Lactalbumin proteins.
Host	Mouse
Clonality	Monoclonal
Clone	9E9
Target Name	LALBA / Lactalbumin
Species	Human
Immunogen	Synthetic peptide of Human LALBA / Lactalbumin.
Conjugation	Un-conjugated
Alternate Names	Lactose synthase B protein; Alpha-lactalbumin; Lysozyme-like protein 7

Application Instructions

Application table	Application	Dilution
	IHC-P	1:50 - 1:300
	WB	1:1000
Application Note	IHC-P: Antigen Retrieval: Boil tissue section in Sodium citrate buffer (pH 6.0) for 20 min. * The dilutions indicate recommended starting dilutions and the optimal dilutions or concentrations should be determined by the scientist.	

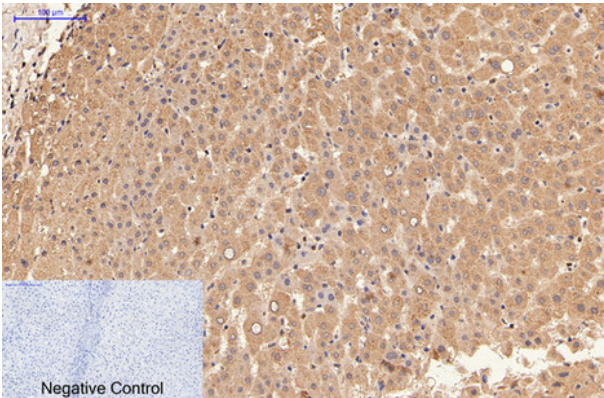
Properties

Form	Liquid
Purification	Affinity purification with immunogen.
Buffer	PBS (pH 7.4), 0.02% Sodium azide and 50% Glycerol.
Preservative	0.02% Sodium azide
Stabilizer	50% Glycerol
Concentration	1 mg/ml
Storage instruction	For continuous use, store undiluted antibody at 2-8°C for up to a week. For long-term storage, aliquot and store at -20°C. Storage in frost free freezers is not recommended. Avoid repeated freeze/thaw cycles. Suggest spin the vial prior to opening. The antibody solution should be gently mixed before use.
Note	For laboratory research only, not for drug, diagnostic or other use.

Bioinformation

Gene Symbol	LALBA
Gene Full Name	lactalbumin, alpha-
Background	This gene encodes alpha-lactalbumin, a principal protein of milk. Alpha-lactalbumin forms the regulatory subunit of the lactose synthase (LS) heterodimer and beta 1,4-galactosyltransferase (beta4Gal-T1) forms the catalytic component. Together, these proteins enable LS to produce lactose by transferring galactose moieties to glucose. As a monomer, alpha-lactalbumin strongly binds calcium and zinc ions and may possess bactericidal or antitumor activity. A folding variant of alpha-lactalbumin, called HAMLET, likely induces apoptosis in tumor and immature cells. [provided by RefSeq, Jul 2008]
Function	Regulatory subunit of lactose synthase, changes the substrate specificity of galactosyltransferase in the mammary gland making glucose a good acceptor substrate for this enzyme. This enables LS to synthesize lactose, the major carbohydrate component of milk. In other tissues, galactosyltransferase transfers galactose onto the N-acetylglucosamine of the oligosaccharide chains in glycoproteins. [UniProt]
Calculated Mw	16 kDa

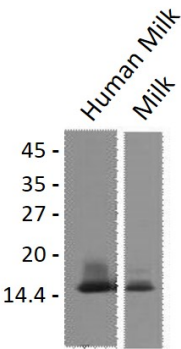
Images



ARG66173 anti-LALBA / Lactalbumin antibody IHC-P image

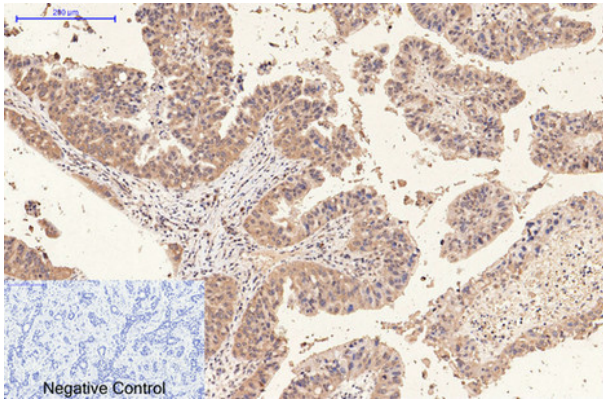
Immunohistochemistry: Paraffin-embedded Human liver tissue stained with ARG66173 anti-LALBA / Lactalbumin antibody at 1:200 dilution (4°C, overnight). Antigen Retrieval: Boil tissue section in Sodium citrate buffer (pH 6.0) for 20 min.

Negative control was used by secondary antibody only.



ARG66173 anti-LALBA / Lactalbumin antibody WB image

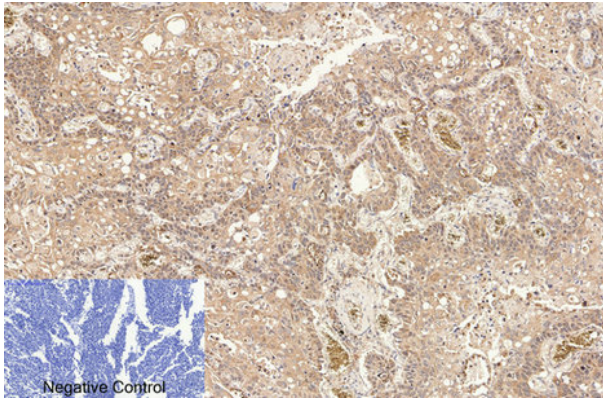
Western blot: 1) Human Milk, and 2) Milk sample stained with ARG66173 anti-LALBA / Lactalbumin antibody at 1:3000 dilution.



ARG66173 anti-LALBA / Lactalbumin antibody IHC-P image

Immunohistochemistry: Paraffin-embedded Human liver cancer tissue stained with ARG66173 anti-LALBA / Lactalbumin antibody at 1:200 dilution (4°C, overnight). Antigen Retrieval: Boil tissue section in Sodium citrate buffer (pH 6.0) for 20 min.

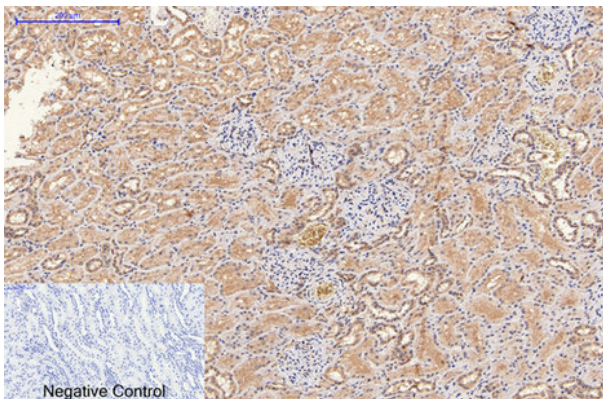
Negative control was used by secondary antibody only.



ARG66173 anti-LALBA / Lactalbumin antibody IHC-P image

Immunohistochemistry: Paraffin-embedded Human lung cancer tissue stained with ARG66173 anti-LALBA / Lactalbumin antibody at 1:200 dilution (4°C, overnight). Antigen Retrieval: Boil tissue section in Sodium citrate buffer (pH 6.0) for 20 min.

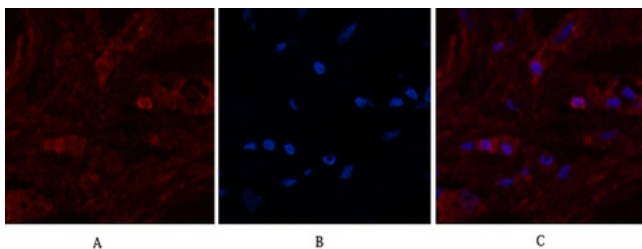
Negative control was used by secondary antibody only.



ARG66173 anti-LALBA / Lactalbumin antibody IHC-P image

Immunohistochemistry: Paraffin-embedded Human kidney tissue stained with ARG66173 anti-LALBA / Lactalbumin antibody at 1:200 dilution (4°C, overnight). Antigen Retrieval: Boil tissue section in Sodium citrate buffer (pH 6.0) for 20 min.

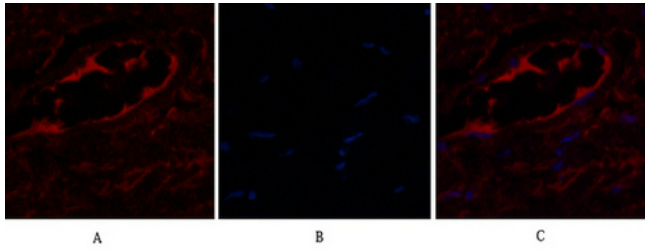
Negative control was used by secondary antibody only.



ARG66173 anti-LALBA / Lactalbumin antibody IHC image

Immunohistochemistry: Human breast tissue stained with ARG66173 anti-LALBA / Lactalbumin antibody (red) at 1:200 dilution (4°C, overnight).

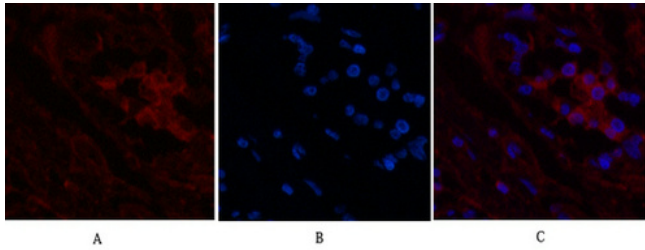
Picture A: Target. Picture B: DAPI. Picture C: merge of A+B.



ARG66173 anti-LALBA / Lactalbumin antibody IHC image

Immunohistochemistry: Human breast tissue stained with ARG66173 anti-LALBA / Lactalbumin antibody (red) at 1:200 dilution (4°C, overnight).

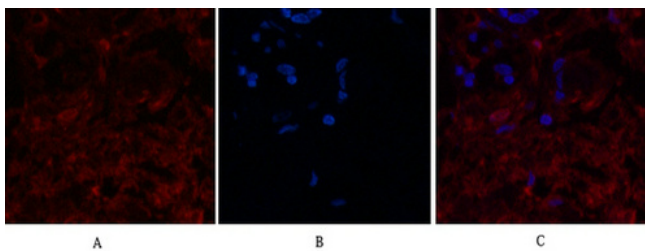
Picture A: Target. Picture B: DAPI. Picture C: merge of A+B.



ARG66173 anti-LALBA / Lactalbumin antibody IHC image

Immunohistochemistry: Human breast tissue stained with ARG66173 anti-LALBA / Lactalbumin antibody (red) at 1:200 dilution (4°C, overnight).

Picture A: Target. Picture B: DAPI. Picture C: merge of A+B.



ARG66173 anti-LALBA / Lactalbumin antibody IHC image

Immunohistochemistry: Human breast tissue stained with ARG66173 anti-LALBA / Lactalbumin antibody (red) at 1:200 dilution (4°C, overnight).

Picture A: Target. Picture B: DAPI. Picture C: merge of A+B.
