

ARG66197 anti-CD20 antibody [SQab1719]

Package: 100 µl, 50 µl
Store at: -20°C

Summary

Product Description	Recombinant Rabbit Monoclonal antibody [SQab1719] recognizes CD20
Tested Reactivity	Hu
Tested Application	FACS, ICC/IF, IHC-P, IP
Host	Rabbit
Clonality	Monoclonal
Clone	SQab1719
Isotype	IgG
Target Name	CD20
Species	Human
Immunogen	Synthetic peptide around the C-terminus of CD20.
Conjugation	Un-conjugated
Alternate Names	Bp35; LEU-16; B-lymphocyte surface antigen B1; B-lymphocyte antigen CD20; CD20; S7; CD antigen CD20; Leukocyte surface antigen Leu-16; B1; CVID5; Membrane-spanning 4-domains subfamily A member 1; MS4A1

Application Instructions

Application table	Application	Dilution
	FACS	1:100 - 1:500
	ICC/IF	1:400 - 1:1000
	IHC-P	1:10000 - 1:20000
	IP	1:20
Application Note	IHC-P: Antigen Retrieval: Heat mediated was performed using Tris/EDTA buffer (pH 9.0) * The dilutions indicate recommended starting dilutions and the optimal dilutions or concentrations should be determined by the scientist.	

Properties

Form	Liquid
Purification	Affinity purification with immunogen.
Buffer	PBS, 0.01% Sodium azide, 40% Glycerol and 0.05% BSA.
Preservative	0.01% Sodium azide
Stabilizer	40% Glycerol and 0.05% BSA
Storage instruction	For continuous use, store undiluted antibody at 2-8°C for up to a week. For long-term storage, aliquot and store at -20°C. Storage in frost free freezers is not recommended. Avoid repeated freeze/thaw

cycles. Suggest spin the vial prior to opening. The antibody solution should be gently mixed before use.

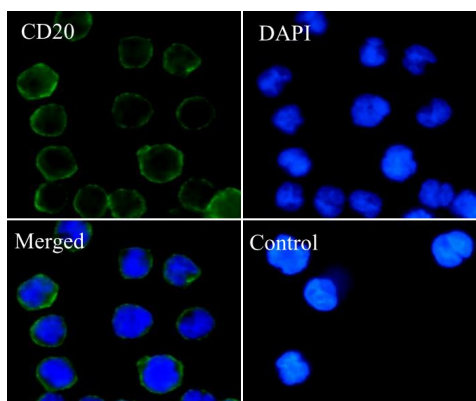
Note

For laboratory research only, not for drug, diagnostic or other use.

Bioinformation

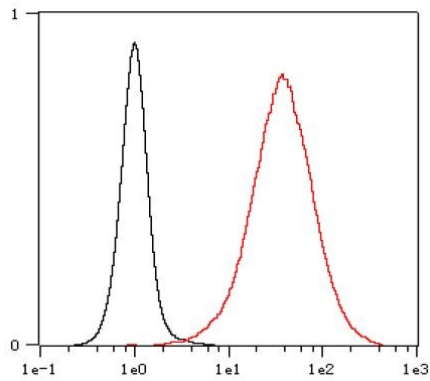
Gene Symbol	MS4A1
Gene Full Name	membrane-spanning 4-domains, subfamily A, member 1
Background	CD20 is a member of the membrane-spanning 4A gene family. Members of this nascent protein family are characterized by common structural features and similar intron/exon splice boundaries and display unique expression patterns among hematopoietic cells and nonlymphoid tissues. This gene encodes a B-lymphocyte surface molecule which plays a role in the development and differentiation of B-cells into plasma cells. This family member is localized to 11q12, among a cluster of family members. Alternative splicing of this gene results in two transcript variants which encode the same protein. [provided by RefSeq, Jul 2008]
Function	CD20 is a B-lymphocyte-specific membrane protein. It plays a role in the regulation of cellular calcium influx necessary for the development, differentiation, and activation of B-lymphocytes (PubMed:3925015, PubMed:7684739, PubMed:12920111). Functions as a store-operated calcium (SOC) channel component promoting calcium influx after activation by the B-cell receptor/BCR (PubMed:7684739, PubMed:12920111, PubMed:18474602). [UniProt]
Highlight	Related Antibody Duos and Panels: ARG30325 Inflammatory Cell Antibody Panel ARG30334 Tumor-infiltrating Lymphocyte Antibody Panel Related products: CD20 antibodies ; CD20 ELISA Kits ; CD20 Duos / Panels ; Anti-Rabbit IgG secondary antibodies ; Related news: Cancer Pathology Markers (SQ clones) New antibody panels and duos for Tumor immune microenvironment Tumor-Infiltrating Lymphocytes (TILs) Exploring Antiviral Immune Response MyD88 L265P antibody for lymphoma research ;
Research Area	Cancer antibody; Developmental Biology antibody; Immune System antibody; B cell Marker antibody; Immature B Cell Marker antibody; Inflammatory Cell Marker antibody; Tumor-infiltrating Lymphocyte Study antibody
Calculated Mw	33 kDa
PTM	Phosphorylated. Might be functionally regulated by protein kinase(s).

Images



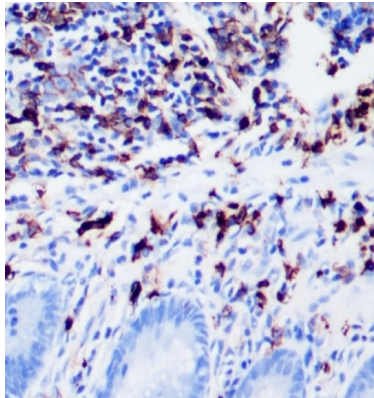
ARG66197 anti-CD20 antibody [SQab1719] ICC/IF image

Immunofluorescence: Raji cells fixed with 4% paraformaldehyde for 30 min at RT, permeabilized with 0.1% Triton X-100 for 10 min at RT then blocked with 10% Goat serum for half an hour at room temperature. Samples were stained with ARG66197 anti-CD20 antibody [SQab1719] (green) at 1:1000 at 4°C. DAPI (blue) was used as the nuclear counter stain. Control: PBS and secondary antibody.



ARG66197 anti-CD20 antibody [SQab1719] FACS image

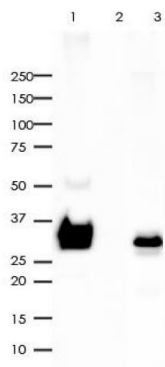
Flow Cytometry: Raji cells were fixed with 4% paraformaldehyde for 10 min. The cells were then stained with ARG66197 anti-CD20 antibody [SQab1719] (red) at 1:500 dilution in 1x PBS/1% BSA for 30 min at room temperature, followed by Alexa Fluor® 488 labelled secondary antibody. Unlabelled sample (black) was used as a control.



ARG66197 anti-CD20 antibody [SQab1719] IHC-P image

Immunohistochemistry: Formalin-fixed and paraffin-embedded Human appendix tissue stained with ARG66197 anti-CD20 antibody [SQab1719] at 1:20000 dilution.

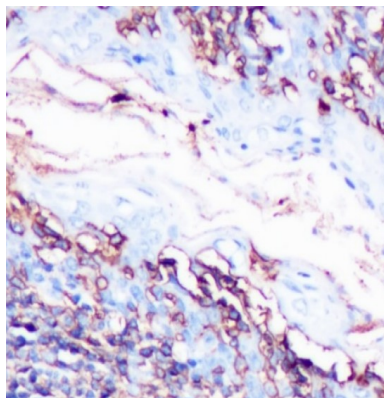
Antigen retrieval: Heat mediated was performed using Tris/EDTA buffer pH 9.0



ARG66197 anti-CD20 antibody [SQab1719] IP image

Immunoprecipitation: 0.4 mg of Raji whole cell lysate was immunoprecipitated (1:20 dilution) and stained with ARG66197 anti-CD20 antibody [SQab1719].

Lane 1: Immunoprecipitation in Raji whole cell lysate
 Lane 2: PBS instead of Primary Ab in Raji whole cell lysate
 Lane 3: Raji whole cell lysate, 10 µg (input)



ARG66197 anti-CD20 antibody [SQab1719] IHC-P image

Immunohistochemistry: Formalin-fixed and paraffin-embedded Human spleen tissue stained with ARG66197 anti-CD20 antibody [SQab1719] at 1:20000 dilution.

Antigen retrieval: Heat mediated was performed using Tris/EDTA buffer pH 9.0