

ARG66202 anti-MUC16 / CA125 antibody [SQab1724]

Package: 100 µl, 50 µl
Store at: -20°C

Summary

Product Description	Recombinant Rabbit Monoclonal antibody [SQab1724] recognizes MUC16 / CA125
Tested Reactivity	Hu
Tested Application	FACS, IHC-P, WB
Host	Rabbit
Clonality	Monoclonal
Clone	SQab1724
Isotype	IgG
Target Name	MUC16 / CA125
Species	Human
Immunogen	Synthetic peptide around aa. 12200-12300 of MUC16 / CA125.
Conjugation	Un-conjugated
Alternate Names	Mucin-16; MUC-16; Ovarian carcinoma antigen CA125; CA125; Ovarian cancer-related tumor marker CA125; CA-125

Application Instructions

Application table	Application	Dilution
	FACS	1:200 - 1:800
	IHC-P	1:200 - 1:400
	WB	1:500

Application Note IHC-P: Antigen retrieval: Heat mediated was performed using Tris/EDTA buffer (pH 9.0).
* The dilutions indicate recommended starting dilutions and the optimal dilutions or concentrations should be determined by the scientist.

Properties

Form	Liquid
Purification	Affinity purification with immunogen.
Buffer	PBS, 0.01% Sodium azide, 40% Glycerol and 0.05% BSA.
Preservative	0.01% Sodium azide
Stabilizer	40% Glycerol and 0.05% BSA
Storage instruction	For continuous use, store undiluted antibody at 2-8°C for up to a week. For long-term storage, aliquot and store at -20°C. Storage in frost free freezers is not recommended. Avoid repeated freeze/thaw cycles. Suggest spin the vial prior to opening. The antibody solution should be gently mixed before use.

Note

For laboratory research only, not for drug, diagnostic or other use.

Bioinformation

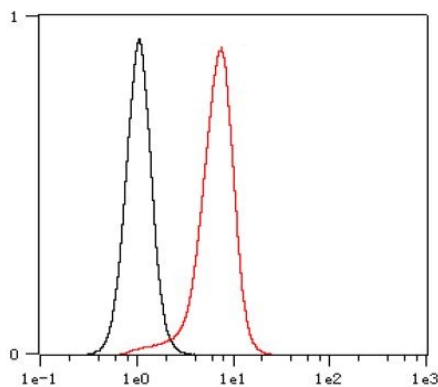
Gene Symbol	MUC16
Gene Full Name	mucin 16, cell surface associated
Function	Thought to provide a protective, lubricating barrier against particles and infectious agents at mucosal surfaces. [UniProt]
Highlight	Related products: MUC16 antibodies ; MUC16 ELISA Kits ; Related news: Cancer Pathology Markers (SQ clones)
Calculated Mw	1519 kDa
PTM	Heavily O-glycosylated; expresses both type 1 and type 2 core glycans. Heavily N-glycosylated; expresses primarily high mannose and complex bisecting type N-linked glycans. May be phosphorylated. Phosphorylation of the intracellular C-terminal domain may induce proteolytic cleavage and the liberation of the extracellular domain into the extracellular space. May contain numerous disulfide bridges. Association of several molecules of the secreted form may occur through interchain disulfide bridges providing an extraordinarily large gel-like matrix in the extracellular space or in the lumen of secretory ducts.

Images



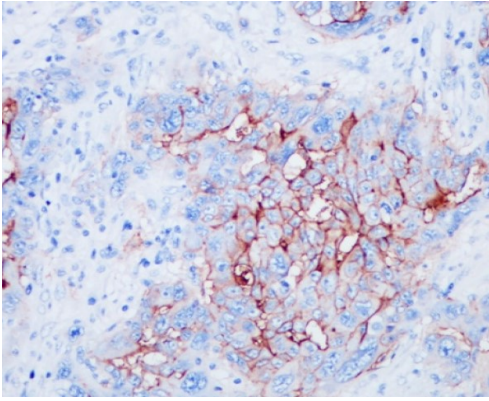
ARG66202 anti-MUC16 / CA125 antibody [SQab1724] WB image

Western blot: 30 µg of HeLa and A431 cell lysates stained with ARG66202 anti-MUC16 / CA125 antibody [SQab1724] at 1:500 dilution.



ARG66202 anti-MUC16 / CA125 antibody [SQab1724] FACS image

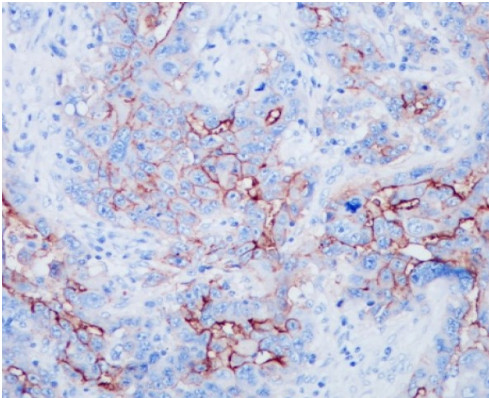
Flow Cytometry: HeLa cells were fixed with 4% paraformaldehyde (10 min) and then permeabilized with 0.1% TritonX-100 for 15 min. The cells were then stained with ARG66202 anti-MUC16 / CA125 antibody [SQab1724] (red) at 1:800 dilution in 1x PBS/1% BSA for 30 min at room temperature, followed by Alexa Fluor® 488 labelled secondary antibody. Unlabelled sample (black) was used as a control.



ARG66202 anti-MUC16 / CA125 antibody [SQab1724] IHC-P image

Immunohistochemistry: Formalin-fixed and paraffin-embedded Human ovarian cancer tissue stained with ARG66202 anti-MUC16 / CA125 antibody [SQab1724] at 1:400 dilution.

Antigen retrieval: Heat mediated was performed using Tris/EDTA buffer pH 9.0



ARG66202 anti-MUC16 / CA125 antibody [SQab1724] IHC-P image

Immunohistochemistry: Formalin-fixed and paraffin-embedded Human ovarian cancer tissue stained with ARG66202 anti-MUC16 / CA125 antibody [SQab1724] at 1:400 dilution.

Antigen retrieval: Heat mediated was performed using Tris/EDTA buffer pH 9.0
