

ARG66206 anti-CD21 antibody [SQab1728]

Package: 100 µl, 50 µl
Store at: -20°C

Summary

Product Description	Recombinant Rabbit Monoclonal antibody [SQab1728] recognizes CD21
Tested Reactivity	Hu
Tested Application	FACS, IHC-P
Host	Rabbit
Clonality	Monoclonal
Clone	SQab1728
Isotype	IgG
Target Name	CD21
Species	Human
Immunogen	Synthetic peptide around the C-terminus of CD21.
Conjugation	Un-conjugated
Alternate Names	Cr2; Complement C3d receptor; C3DR; CD21; CD antigen CD21; Complement receptor type 2; SLEB9; CR; CVID7; Epstein-Barr virus receptor; EBV receptor

Application Instructions

Application table	Application	Dilution
	FACS	1:10
	IHC-P	1:200 - 1:400
Application Note	IHC-P: Antigen retrieval: Heat mediated was performed using Tris/EDTA buffer (pH 9.0). * The dilutions indicate recommended starting dilutions and the optimal dilutions or concentrations should be determined by the scientist.	

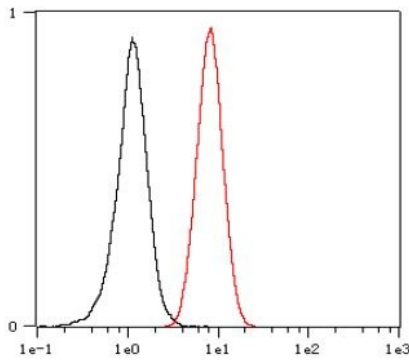
Properties

Form	Liquid
Purification	Affinity purification with immunogen.
Buffer	PBS, 0.01% Sodium azide, 40% Glycerol and 0.05% BSA.
Preservative	0.01% Sodium azide
Stabilizer	40% Glycerol and 0.05% BSA
Storage instruction	For continuous use, store undiluted antibody at 2-8°C for up to a week. For long-term storage, aliquot and store at -20°C. Storage in frost free freezers is not recommended. Avoid repeated freeze/thaw cycles. Suggest spin the vial prior to opening. The antibody solution should be gently mixed before use.
Note	For laboratory research only, not for drug, diagnostic or other use.

Bioinformation

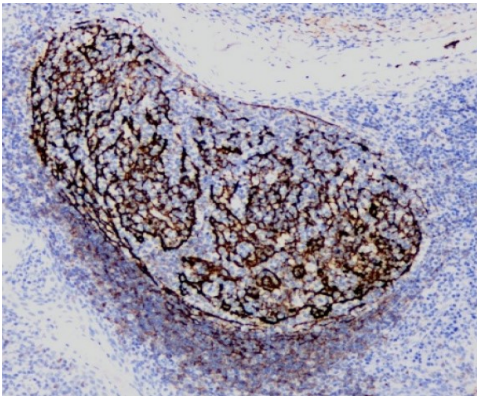
Gene Symbol	CR2
Gene Full Name	complement component (3d/Epstein Barr virus) receptor 2
Background	This gene encodes a membrane protein, which functions as a receptor for Epstein-Barr virus (EBV) binding on B and T lymphocytes. Genetic variations in this gene are associated with susceptibility to systemic lupus erythematosus type 9 (SLEB9). Alternatively spliced transcript variants encoding different isoforms have been found for this gene.[provided by RefSeq, Sep 2009]
Function	Receptor for complement C3Dd, for the Epstein-Barr virus on human B-cells and T-cells and for HNRPU. Participates in B lymphocytes activation. [UniProt]
Highlight	Related products: CD21 antibodies ; CD21 ELISA Kits ; Related news: Cancer Pathology Markers (SQ clones)
Calculated Mw	113 kDa

Images



ARG66206 anti-CD21 antibody [SQab1728] FACS image

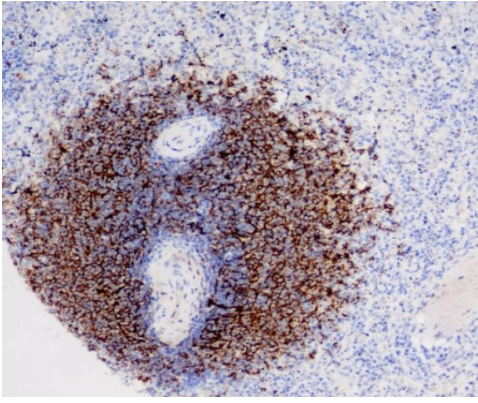
Flow Cytometry: Ramos cells were fixed with 4% paraformaldehyde (10 min) and then permeabilized with 0.1% TritonX-100 for 15 min. The cells were then stained with ARG66206 anti-CD21 antibody [SQab1728] (red) at 1:10 dilution in 1x PBS/1% BSA for 30 min at room temperature, followed by Alexa Fluor® 488 labelled secondary antibody. Unlabelled sample (black) was used as a control.



ARG66206 anti-CD21 antibody [SQab1728] IHC-P image

Immunohistochemistry: Formalin-fixed and paraffin-embedded Human spleen tissue stained with ARG66206 anti-CD21 antibody [SQab1728] at 1:200 dilution.

Antigen retrieval: Heat mediated was performed using Tris/EDTA buffer pH 9.0



ARG66206 anti-CD21 antibody [SQab1728] IHC-P image

Immunohistochemistry: Formalin-fixed and paraffin-embedded Human appendix tissue stained with ARG66206 anti-CD21 antibody [SQab1728] at 1:200 dilution.

Antigen retrieval: Heat mediated was performed using Tris/EDTA buffer pH 9.0