

ARG66228 anti-CD49c / Integrin alpha 3 antibody [ASC-1]

Package: 100 µg
Store at: -20°C

Summary

Product Description	Mouse Monoclonal antibody [ASC-1] recognizes CD49c / Integrin alpha 3
Tested Reactivity	Hu
Tested Application	CyTOF®-candidate, FACS, IHC-Fr, IP, WB
Specificity	This antibody recognizes CD49c (integrin alpha 3), a transmembrane glycoprotein composed of disulfide linked 125 kDa and 30 kDa chains, and expressed on adherent cell lines and to a lesser extent on T and B cells and monocytes.
Host	Mouse
Clonality	Monoclonal
Clone	ASC-1
Isotype	IgG1
Target Name	CD49c / Integrin alpha 3
Species	Human
Immunogen	Human SSC-9 cell line (squamous cell carcinoma).
Conjugation	Un-conjugated
Alternate Names	FRP-2; MSK18; GAPB3; CD49 antigen-like family member C; CD49C; ILNEB; Integrin alpha-3; VL3A; Galactoprotein B3; VLA3a; CD antigen CD49c; VCA-2; VLA-3 subunit alpha; GAP-B3

Application Instructions

Application table	Application	Dilution
	CyTOF®-candidate	Assay-dependent
	FACS	1 - 4 µg/ml
	IHC-Fr	Assay-dependent
	IP	Assay-dependent
	WB	Assay-dependent
Application Note	* The dilutions indicate recommended starting dilutions and the optimal dilutions or concentrations should be determined by the scientist.	

Properties

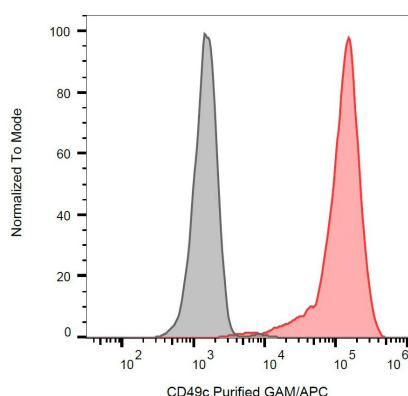
Form	Liquid
Purification	Purification with Protein A.
Purity	> 95% (by SDS-PAGE)
Buffer	PBS (pH 7.4) and 15 mM Sodium azide.

Preservative	15 mM Sodium azide
Concentration	1 mg/ml
Storage instruction	For continuous use, store undiluted antibody at 2-8°C for up to a week. For long-term storage, aliquot and store at -20°C or below. Storage in frost free freezers is not recommended. Avoid repeated freeze/thaw cycles. Suggest spin the vial prior to opening. The antibody solution should be gently mixed before use.
Note	For laboratory research only, not for drug, diagnostic or other use.

Bioinformation

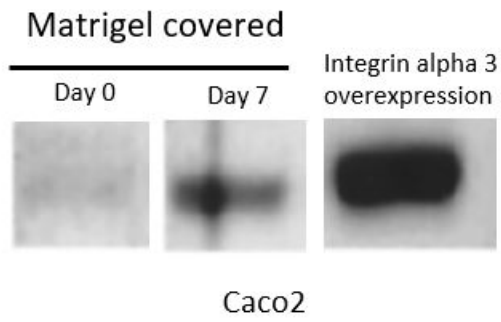
Gene Symbol	ITGA3
Gene Full Name	integrin, alpha 3 (antigen CD49C, alpha 3 subunit of VLA-3 receptor)
Background	The protein encoded by this gene belongs to the family of integrins. Integrins are heterodimeric integral membrane proteins composed of an alpha chain and a beta chain, and function as cell surface adhesion molecules. This gene encodes alpha 3 subunit, which undergoes post-translational cleavage in the extracellular domain to yield disulfide-linked light and heavy chains that join with beta 1 subunit to form an integrin that interacts with many extracellular-matrix proteins. Alternatively spliced transcript variants encoding different isoforms have been identified for this gene. [provided by RefSeq, Oct 2008]
Function	Integrin alpha-3/beta-1 is a receptor for fibronectin, laminin, collagen, epiligrin, thrombospondin and CSPG4. Integrin alpha-3/beta-1 provides a docking site for FAP (seprase) at invadopodia plasma membranes in a collagen-dependent manner and hence may participate in the adhesion, formation of invadopodia and matrix degradation processes, promoting cell invasion. Alpha-3/beta-1 may mediate with LGALS3 the stimulation by CSPG4 of endothelial cells migration. [UniProt]
Highlight	Related products: CD49c antibodies ; Anti-Mouse IgG secondary antibodies ; Related news: CyTOF-candidate Antibodies
Calculated Mw	A transmembrane glycoprotein composed of disulfide linked 125 kDa and 30 kDa chains.
PTM	Isoform 1, but not isoform 2, is phosphorylated on serine residues. Phosphorylation increases after phorbol 12-myristate 13-acetate stimulation. [UniProt]

Images



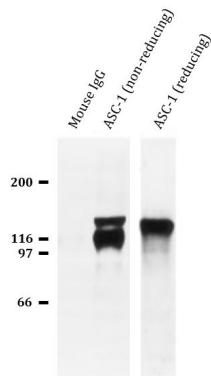
ARG66228 anti-CD49c / Integrin alpha 3 antibody [ASC-1] FACS image

Flow Cytometry: HeLa cells stained with ARG66228 anti-CD49c / Integrin alpha 3 antibody [ASC-1].



ARG66228 anti-CD49c / Integrin alpha 3 antibody [ASC-1] WB image

Western blot: Caco2 cells covered with matrigel for 0 or 7 days (Lane 1 & Lane 2) and Integrin alpha 3 overexpressing Caco2 cells. The blots were stained with ARG66228 anti-CD49c / Integrin alpha 3 antibody [ASC-1].



ARG66228 anti-CD49c / Integrin alpha 3 antibody [ASC-1] IP image

Immunoprecipitation: Biotinylated SCC9 cell extract were immunoprecipitated by control mouse IgG (Lane 1) or ARG66228 anti-CD49c / Integrin alpha 3 antibody [ASC-1] (Lane 2 & Lane 3). Then run SDS-PAGE at non-reducing condition (Lane 2) or reducing condition (Lane 3).