

ARG66240 anti-FGL1 / Hepassocin antibody

Package: 100 µg
Store at: -20°C

Summary

Product Description	Rabbit Polyclonal antibody recognizes FGL1 / Hepassocin
Tested Reactivity	Ms, Rat
Tested Application	IHC-P, WB
Specificity	This antibody detects endogenous levels of Hepassocin protein.
Host	Rabbit
Clonality	Polyclonal
Isotype	IgG
Target Name	FGL1 / Hepassocin
Species	Human
Immunogen	Synthetic peptide around the center region of Human Hepassocin.
Conjugation	Un-conjugated
Alternate Names	HFREP1; Fibrinogen-like protein 1; Hepatocyte-derived fibrinogen-related protein 1; Hepassocin; Liver fibrinogen-related protein 1; LFIRE-1; HP-041; HFREP-1; LFIRE1

Application Instructions

Application table	Application	Dilution
	IHC-P	1:100 - 1:300
	WB	1:500 - 1:2000
Application Note	* The dilutions indicate recommended starting dilutions and the optimal dilutions or concentrations should be determined by the scientist.	
Observed Size	35 kDa	

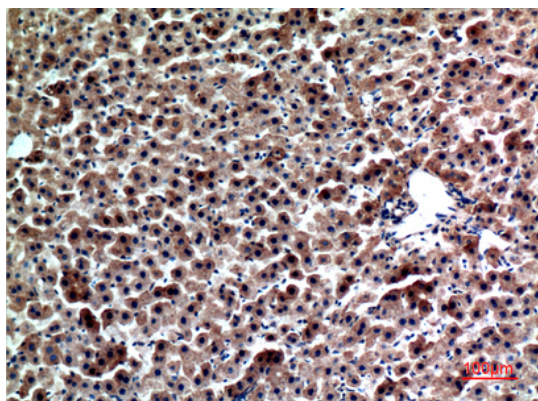
Properties

Form	Liquid
Purification	Affinity purification with immunogen.
Buffer	PBS, 0.02% Sodium azide, 50% Glycerol and 0.5% BSA.
Preservative	0.02% Sodium azide
Stabilizer	50% Glycerol and 0.5% BSA
Concentration	1 mg/ml
Storage instruction	For continuous use, store undiluted antibody at 2-8°C for up to a week. For long-term storage, aliquot and store at -20°C. Storage in frost free freezers is not recommended. Avoid repeated freeze/thaw cycles. Suggest spin the vial prior to opening. The antibody solution should be gently mixed before use.

Bioinformation

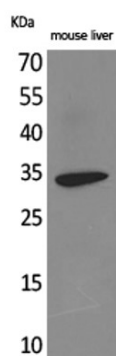
Gene Symbol	FGL1
Gene Full Name	fibrinogen-like 1
Background	Fibrinogen-like 1 is a member of the fibrinogen family. This protein is homologous to the carboxy terminus of the fibrinogen beta- and gamma- subunits which contains the four conserved cysteines of fibrinogens and fibrinogen related proteins. However, this protein lacks the platelet-binding site, cross-linking region and a thrombin-sensitive site which are necessary for fibrin clot formation. This protein may play a role in the development of hepatocellular carcinomas. Four alternatively spliced transcript variants encoding the same protein exist for this gene. [provided by RefSeq, Jul 2008]
Function	Has hepatocyte mitogenic activity. [UniProt]
Calculated Mw	36 kDa

Images



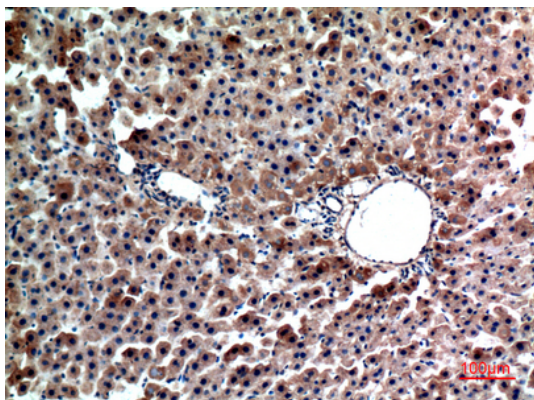
ARG66240 anti-FGL1 / Hepassocin antibody IHC-P image

Immunohistochemistry: Paraffin-embedded Rat liver stained with ARG66240 anti-FGL1 / Hepassocin antibody at 1:100 dilution.



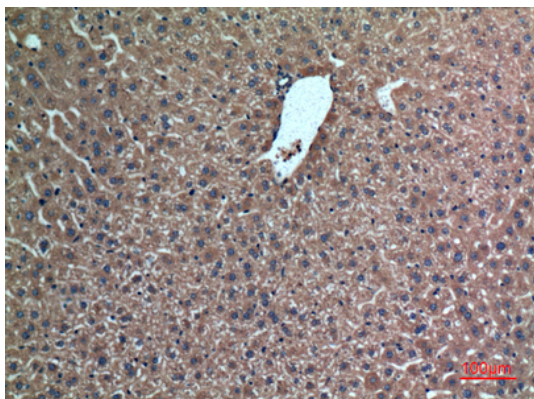
ARG66240 anti-FGL1 / Hepassocin antibody WB image

Western blot: Mouse liver lysate stained with ARG66240 anti-FGL1 / Hepassocin antibody.



ARG66240 anti-FGL1 / Hepassocin antibody IHC-P image

Immunohistochemistry: Paraffin-embedded Rat liver stained with ARG66240 anti-FGL1 / Hepassocin antibody at 1:100 dilution.



ARG66240 anti-FGL1 / Hepassocin antibody IHC-P image

Immunohistochemistry: Paraffin-embedded Mouse liver stained with ARG66240 anti-FGL1 / Hepassocin antibody at 1:100 dilution.