

ARG66252 anti-CD138 / Syndecan 1 antibody [SQab1741]

Package: 100 µl, 50 µl
Store at: -20°C

Summary

Product Description	Recombinant Rabbit Monoclonal antibody [SQab1741] recognizes CD138 / Syndecan 1
Tested Reactivity	Hu
Tested Application	FACS, IHC-P
Host	Rabbit
Clonality	Monoclonal
Clone	SQab1741
Isotype	IgG
Target Name	CD138 / Syndecan 1
Species	Human
Immunogen	Synthetic peptide around aa. 200-300 of Human CD138.
Conjugation	Un-conjugated
Alternate Names	CD antigen CD138; syndecan; CD138; SDC; Syndecan-1; SYND1

Application Instructions

Application table	Application	Dilution
	FACS	1:25 - 1:100
	IHC-P	1:100 - 1:200

Application Note IHC-P: Antigen Retrieval: Boil tissue section in Tris/EDTA buffer (pH 9.0).
* The dilutions indicate recommended starting dilutions and the optimal dilutions or concentrations should be determined by the scientist.

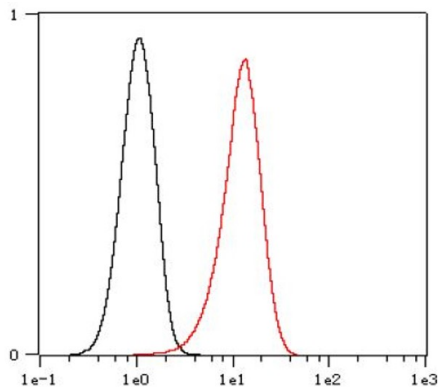
Properties

Form	Liquid
Purification	Purification with Protein A.
Buffer	PBS, 0.01% Sodium azide, 40% Glycerol and 0.05% BSA.
Preservative	0.01% Sodium azide
Stabilizer	40% Glycerol and 0.05% BSA
Storage instruction	For continuous use, store undiluted antibody at 2-8°C for up to a week. For long-term storage, aliquot and store at -20°C. Storage in frost free freezers is not recommended. Avoid repeated freeze/thaw cycles. Suggest spin the vial prior to opening. The antibody solution should be gently mixed before use.
Note	For laboratory research only, not for drug, diagnostic or other use.

Bioinformation

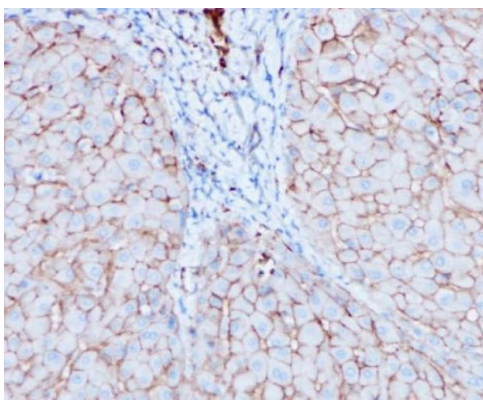
Gene Symbol	SDC1
Gene Full Name	syndecan 1
Background	The protein encoded by this gene is a transmembrane (type I) heparan sulfate proteoglycan and is a member of the syndecan proteoglycan family. The syndecans mediate cell binding, cell signaling, and cytoskeletal organization and syndecan receptors are required for internalization of the HIV-1 tat protein. The syndecan-1 protein functions as an integral membrane protein and participates in cell proliferation, cell migration and cell-matrix interactions via its receptor for extracellular matrix proteins. Altered syndecan-1 expression has been detected in several different tumor types. While several transcript variants may exist for this gene, the full-length nature of only two have been described to date. These two represent the major variants of this gene and encode the same protein. [provided by RefSeq, Jul 2008]
Function	Cell surface proteoglycan that bears both heparan sulfate and chondroitin sulfate and that links the cytoskeleton to the interstitial matrix. [UniProt]
Highlight	Related products: CD138 antibodies ; CD138 ELISA Kits ; Anti-Rabbit IgG secondary antibodies ; Related news: Cancer Pathology Markers (SQ clones) ; MyD88 L265P antibody for lymphoma research ;
Calculated Mw	32 kDa
PTM	Shedding is enhanced by a number of factors such as heparanase, thrombin or EGF. Also by stress and wound healing. PMA-mediated shedding is inhibited by TIMP3. [UniProt]

Images



ARG66252 anti-CD138 / Syndecan 1 antibody [SQab1741] FACS image

Flow Cytometry: Raji cells were fixed with 4% paraformaldehyde for 10 min. The cells were then stained with ARG66252 anti-CD138 / Syndecan 1 antibody [SQab1741] (red) at 1:100 dilution in 1x PBS/1% BSA for 30 min at room temperature, followed by Alexa Fluor® 488 labelled secondary antibody. Unlabelled sample (Black) was used as a control.



ARG66252 anti-CD138 / Syndecan 1 antibody [SQab1741] IHC-P image

Immunohistochemistry: Formalin-fixed and paraffin-embedded Human Liver tissue stained with ARG66252 anti-CD138 / Syndecan 1 antibody [SQab1741] at 1:200. Antigen Retrieval: Boil tissue section in Tris/EDTA buffer (pH 9.0).